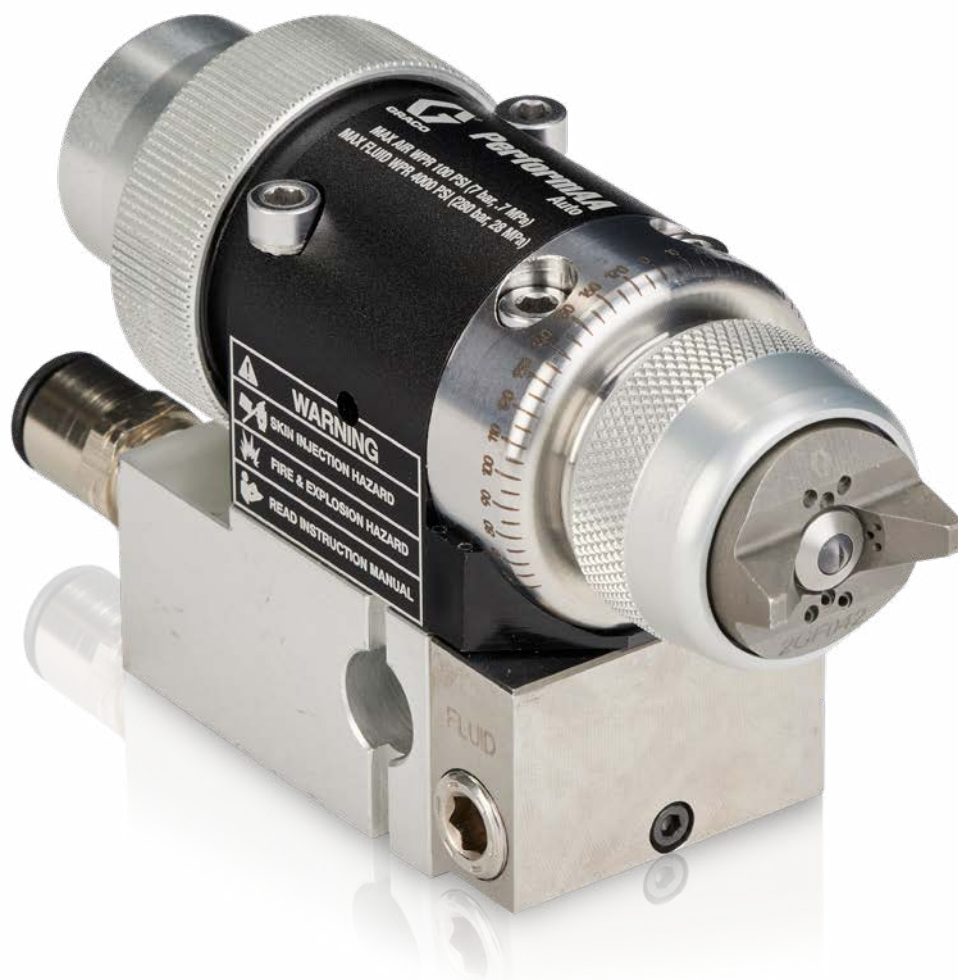




PerformAA™ Auto

Automatic Air Assist Spray Guns



Achieve performance above all at high production speeds with spray guns, air caps made for your automated finishing application.

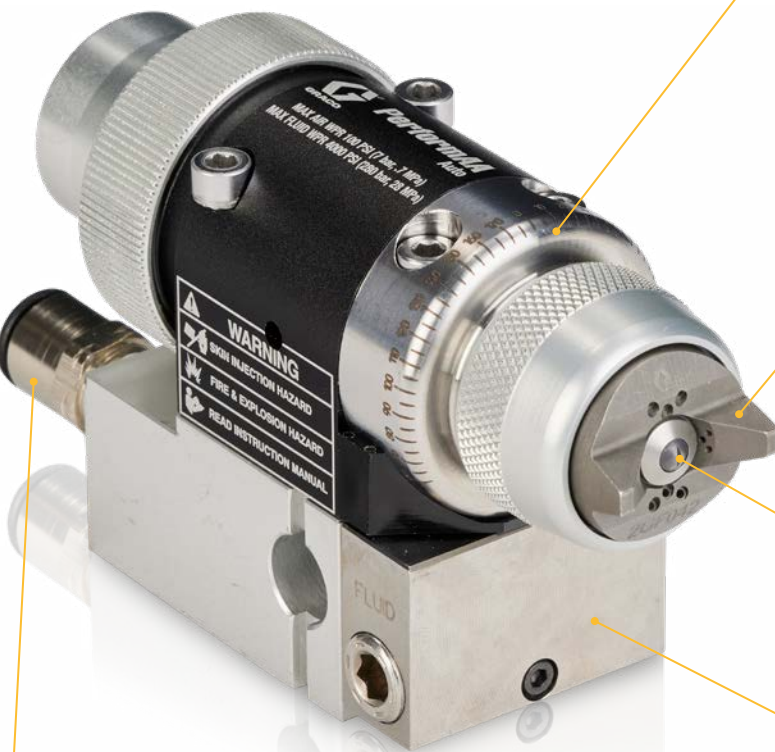
PROVEN QUALITY. LEADING TECHNOLOGY.

Made to Optimize Your Performance

Designed with feedback from finishing operations, PerformAA Auto comes directly from our factory to yours with high-performance features you'll find in no other automatic air assist spray gun.

Peak Performance

Gun sprays at a maximum fluid pressure of 4,000 psi (pounds per square inch) for peak performance.



Quick disconnect air fittings

make transitions easy.

Air cap angle indicators

help operators and maintenance technicians set and quickly repeat the exact air cap orientation required for the application. PerformAA Auto is the only automatic air-assisted spray gun on the market with this feature.

Material-specific air caps

Produce the finest atomization with the least amount of guesswork.

INTERIOR PASSAGES

recirculate fluid up to the nozzle, eliminating dead spots.

Durable spray tips

Provide accurate pattern width.



Manifold options

Have the same tool center point as legacy Graco automatic air-assisted sprayers. Choices include a rear port manifold for robots or compact spaces.

LIGHTWEIGHT AND DURABLE

stainless steel construction on wetted parts extends service life on reciprocators and robots.



AMERICAN BUILT QUALITY — PerformAA Auto air assist spray guns are designed, manufactured, assembled, and factory-tested in the USA.

Made to Optimize Your Performance



Reverse-A-Clean® (RAC®) tips

Perform well spraying a wide variety of coatings. For quick cleaning with minimal downtime, simply turn the reversible tip to the clean position to unclog the tip and spray.

▶ Quickly Set and Repeat the Exact Angle with the Graco Gauge



Precise air cap orientation is critical to automatic finishing, especially in flatline applications. But you usually have to “eyeball” the exact angle needed to optimize spray – and reset it every time air caps are cleaned or guns are serviced.

When paint line operators and maintenance technicians told us about that common problem, we responded with the Graco Gauge. The tool was designed to help easily set and quickly replicate PerformAA air cap angle exactly where it needs to be for high performance spraying.

The Graco Gauge is part of kit 26B736.

The tool, plus the angle indicators on every PerformAA Auto, are unique in wood and metal finishing. No other automatic air assist sprayer offers those features.



▶ Made for Your Material and Applica

Whether you are finishing industrial components, construction equipment, wood cabinets, or extrusions, there is a PerformAA Auto air cap for you.

Each air cap is geometrically designed for the finest atomization with the least amount of guesswork when spraying a certain material.



WATERBORNE



WOOD LAQUER



GENERAL FINISHING



LOW VISCOSITY



HIGH VISCOSITY



QUICK DRYING

Made to Optimize Your Performance

Ordering Information

Gun Models

Part Number	Description
26B570	General Finishing Gun Includes General Finishing Air Cap, carbide needle/ball and carbide seat. AXP precision spray tip of choice is specified when ordered.
26B571	Lacquer Gun Includes Lacquer Air Cap, carbide needle/ball and carbide seat. AXP precision spray tip of choice is specified when ordered.
26B572	Acid Catalyst Includes General Finishing Air Cap, stainless steel needle/ball and an acetal seat. AXP precision spray tip of choice is specified when ordered.
26B573	Reverse-A-Clean (RAC) Gun Specially designed to handle acid-catalyzed materials. Includes stainless steel needle/ball and an acetal seat. AXP precision spray tip of choice is specified when ordered.
26B574	Thin Materials Includes Thin Materials Air Cap, carbide needle/ball and carbide seat. AXP precision spray tip of choice is specified when ordered.
26B575	Waterborne Gun Includes Waterborne Air Cap, carbide needle/ball and carbide seat. AXP precision spray tip of choice is specified when ordered.
26B576	Quick Dry Gun Includes Quick Dry Air Cap, carbide needle/ball and carbide seat. AXP precision spray tip of choice is specified when ordered.
26B577	High Viscosity Gun Includes High Viscosity Air Cap, carbide needle/ball and carbide seat. AXP precision spray tip of choice is specified when ordered.

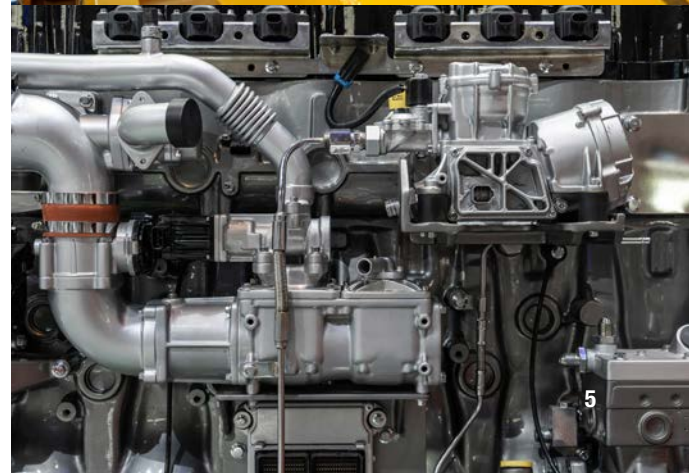
Accessories

Part Number	Description
26B736	Graco Gauge Air Cap Alignment Tool Used to quickly reset exact air cap orientation after gun service, etc.
249140	HVLP Verification Kit Use to check air cap air pressure at various air supply air pressures. Do not use for actual spraying.
249598	Unclogging Needle Kit Kit includes picks for unclogging gun tip.
15C161	Ultimate Gun Cleaning Kit Kit includes brushes and tools for gun maintenance.
249424	Acetal Seat Repair Kit Kit includes replacement, acetal seat (pack of 10), and seat nut.
249456	Carbide Seat Repair Kit Kit includes carbide seat, seat nut and seat gasket.
287962	SST Seat Repair Kit Kit includes assembled diffuser with SST seat for use with pigmented acid catalyst material.
253032	Aircap Seal Kit Kit includes pack of 5 seals and 5 o-rings for the aircap assembly.
248936	RAC Acetal Gasket Pack of 5 plastic (acetal) replacement RAC gaskets
287917	RAC Conversion Kit Converts a gun from a standard air cap and AAP spray tip to a RAC air cap and LTX spray tip.

Made for Your Material and Application

Manifolds

Part Number	Description
288221	Manifold with bottom fluid ports
288217	Manifold with side fluid ports
288224	Manifold with manual fan control with side fluid ports
288160	Rear Port Manifold Rear exit fluid fitting manifold is designed for robotic or compact applications.
288197	Manifold Adapter Plate Allows the manifold to be attached to a variety of bolt patterns.



Made to Optimize Your Performance

Made to Last

PerformAA spray tips not only work with each air cap to produce the best atomization for your application, they withstand the wear and tear of any finishing application or industry.



AXP fine finish, pre-orifice tips produce a soft spray for high transfer efficiency at low to medium pressures.

AXP Tip Chart

All tips in the AXP selection chart can be used with all PerformAA Auto Guns. Order desired tip (part no. AXPxxx) from the selection chart below.

Orifice Size mm (in)	*Fluid Output, fl ,lpm (oz/min)		Maximum Pattern Width at 305 mm (12 in)						
	at 41 bar (600 psi, 4.1 MPa)	at 70 bar (1000 psi, 7.0 MPa)	150 (4 to 6)	200 (6 to 8)	250 (8 to 10)	300 (10 to 12)	350 (12 to 14)	400 (14 to 16)	450 (16 to 18)
0.229 (*0.009)	0.2 (7.0)	0.27 (9.1)	209	309	409	509			
0.279 (* 0.011)	0.3 (10.0)	0.4 (13.0)	211	311	411	511	611		
0.330 (0.013)	0.4 (13.0)	0.5 (16.9)	213	313	413	513	613	713	
0.381 (0.015)	0.5 (17.0)	0.7 (22.0)	215	315	415	515	615	715	815
0.432 (0.017)	0.7 (22.0)	0.85 (28.5)		317	417	517	617	717	817
0.483 (0.019)	0.8 (28.0)	1.09 (36.3)			419	519	619	719	
0.533 (0.021)	1.0 (35.0)	1.36 (45.4)			421	521	621		821



AXF fine finish tips are recommended for high finish quality at low and medium pressures. Their pre-orifice assists in atomizing shear thinning material, such as lacquer.

AXF Tip Chart

Recommended for high finish quality applications at low and medium pressure. AXF tips have a pre-orifice that assists in atomizing shear thinning materials, including lacquers. Order desired tip (part no. AXFxxx).

Orifice Size mm (in)	*Fluid Output, fl ,lpm (oz/min)		Maximum Pattern Width at 305 mm (12 in)							
	at 41 bar (600 psi, 4.1 MPa)	at 70 bar (1000 psi, 7.0 MPa)	100 (2 to 4)	150 (4 to 6)	200 (6 to 8)	250 (8 to 10)	300 (10 to 12)	350 (12 to 14)	400 (14 to 16)	450 (16 to 18)
0.178 (0.007)	0.12 (4.0)	0.15 (5.2)			306					
0.229 (0.009)	0.21 (7.0)	0.25 (8.5)	108	208	308	408	508	608		
0.279 (0.011)	0.28 (9.5)	0.37 (12.5)		210	310	410	510	610	710	
0.330 (0.013)	0.35 (12)	0.47 (16)		212	312	412	512	612	712	
0.381 (0.015)	0.47 (16)	0.62 (21)			314	414	514	614	714	814
0.432 (0.017)	0.59 (20)	0.78 (26.5)			316	416	516	616	716	
0.483 (0.019)							518			

*Tips are tested in water.

Made for Your Material and Application



LTX tips feature Reverse-A-Clean (RAC) which enables users to unclog tips quickly.

LTX Tip Chart

All tips in the LTX selection chart can be used with Model 26B537 PerformAA Auto RAC gun. Order desired tip (part no LTXxxx) from the selection chart below. The RAC air cap also accommodates fine finish tips (FFTxxx) and wide RAC tips (WRXxxx). Refer to instruction manual 3A8553.

Orifice Size mm (in)	*Fluid Output, fl ,lpm (oz/min)	Maximum Pattern Width at 305 mm (12 in)				
	at 140 bar (2000 psi, 14.0 MPa)	150 (4 to 6)	200 (6 to 8)	250 (8 to 10)	300 (10 to 12)	350 (12 to 14)
0.229 (0.009)	0.33 (11.2)	209	309			
0.279 (0.011)	0.49 (16.6)	211	311	411	511	
0.330 (0.013)	0.69 (23.3)	213	313	413	513	
0.381 (0.015)	0.91 (30.8)	215	315	415	515	615
0.432 (0.017)	1.17 (39.5)	217	317	417	517	617
0.483 (0.019)	1.47 (49.7)	219	319	419	519	619
0.533 (0.021)	1.79 (60.5)		321	421	521	621
0.584 (0.023)	2.15 (72.7)			423	523	623
0.635 (0.025)	2.54 (85.9)				525	625
0.686 (0.027)	2.96 (100.0)				527	627
0.737 (0.029)	3.42 (115.6)					629
0.787 (0.031)	3.90 (131.8)				531	631

Technical Specifications

Maximum fluid pressure	276 bar (4000 psi, 27.6 MPa)
Maximum working air pressure	7 bar (100 psi, 0.7 MPa)
Maximum cylinder air pressure	7 bar (100 psi, 0.7 MPa)
Minimum actuating pressure	3.5 bar (50 psi, 0.3 MPa)
Triggering speed	60 msec (fully open or closed)
Maximum working fluid temperature	49°C (120°F)
Wetted parts	stainless steel, carbide, UHMWPE, acetal, polyethylene, chemically resistant fluoroelastomer, PTFE, polyimide
Gun weight	545 g (1.2 lb)
Gun and manifold weight	770 g (1.7 lb)
Air inlet	
Atomizing air	3/8 in OD tube
Fan air	3/8 in OD tube
Cylinder air	1/4 in OD tube
Fluid inlet	1/4 in npsm
Dimensions (excluding fittings)	135 mm L x 76 mm H x 51 mm W (5.3 in L x 3.0 in H x 2.0 in W)
Instruction manual	3A8553



ABOUT GRACO

Founded in 1926, Graco is a world leader in fluid handling systems and components. Graco products move, measure, control, dispense and apply a wide range of fluids and viscous materials used in vehicle lubrication, commercial and industrial settings.

The company's success is based on its unwavering commitment to technical excellence, world-class manufacturing and unparalleled customer service. Working closely with qualified distributors, Graco offers systems, products and technology that set the quality standard in a wide range of fluid handling solutions. Graco provides equipment for spray finishing, protective coating, paint circulation, lubrication, and dispensing sealants and adhesives, along with power application equipment for the contractor industry. Graco's ongoing investment in fluid management and control will continue to provide innovative solutions to a diverse global market.

GRACO LOCATIONS

MAILING ADDRESS

P.O. Box 1441
Minneapolis, MN 55440-1441
Tel: 612-623-6000
Fax: 612-623-6777

AMERICAS

MINNESOTA
Worldwide Headquarters
Graco Inc.
88-11th Avenue N.E.
Minneapolis, MN 55413

EUROPE

BELGIUM
European Distribution Center
Graco Distribution BV
Industrieterrein-Oude Bunders
Slakweidestraat 31
3630 Maasmechelen,
Belgium
Tel: 32 89 770 700
Fax: 32 89 770 777

ASIA PACIFIC

AUSTRALIA
Graco Australia Pty Ltd.
Suite 17, 2 Enterprise Drive
Bundoora, Victoria 3083
Australia
Tel: 61 3 9468 8500
Fax: 61 3 9468 8599

CHINA
Graco Fluid Equipment
(Shanghai) Co.,Ltd
Building 7, No. 1-2,
Wenshui Road 299
Jing'an District
Shanghai 200436
P.R. China
Tel: 86 512 6260 5711
Fax: 86 21 6495 0077

INDIA

Graco Hong Kong Ltd.
India Liaison Office
Room 432, Augusta Point
Regus Business Centre 53
Golf Course Road
Gurgaon, Haryana
India 122001
Tel: 91 124 435 4208
Fax: 91 124 435 4001

JAPAN

Graco K.K.
1-27-12 Hayabuchi
Tsuzuki-ku
Yokohama City, Japan 2240025
Tel: 81 45 593 7300
Fax: 81 45 593 7301

KOREA

Graco Korea Inc.
38, Samsung 1-ro 1-gil
Hwaseong-si, Gyeonggi-do, 18449
Republic of Korea
Tel: 82 31 8015 0961
Fax: 82 31 613 9801

All written and visual data contained in this document are based on the latest product information available at the time of publication. Graco reserves the right to make changes at any time without notice.

Graco is certified ISO 9001.



Europe
+32 89 770 700
FAX +32 89 770 777
WWW.GRACO.COM

©2020 Graco Distribution BV 345179ENEU Rev. A 11/21 Printed in Europe.
All other brand names or marks are used for identification purposes and are trademarks of their respective owners.
For more information on Graco's intellectual property, see www.graco.com/patent or www.graco.com/trademarks.