

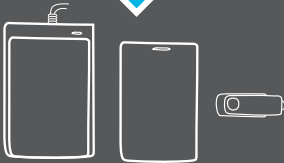
PULSE™ FC

FLUID CONTROL

1

Software Quick Start

graco.com



Starter Kit



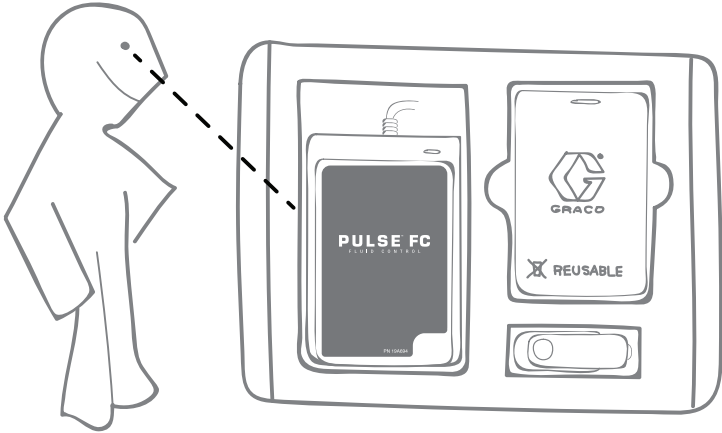
Set-up



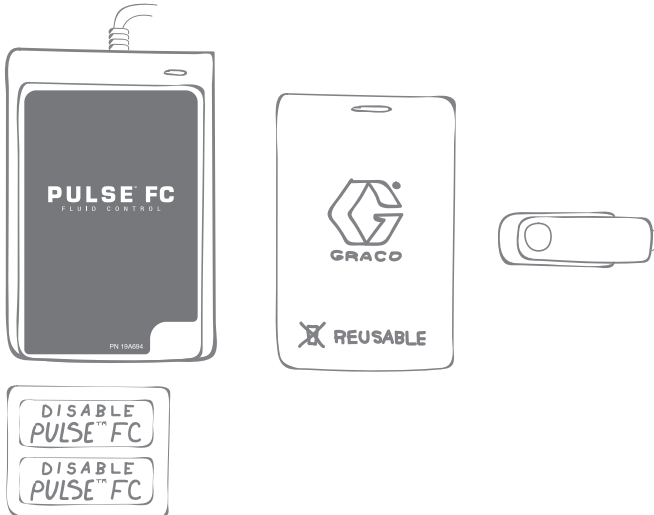
Configure

Open Starter Kit

1.

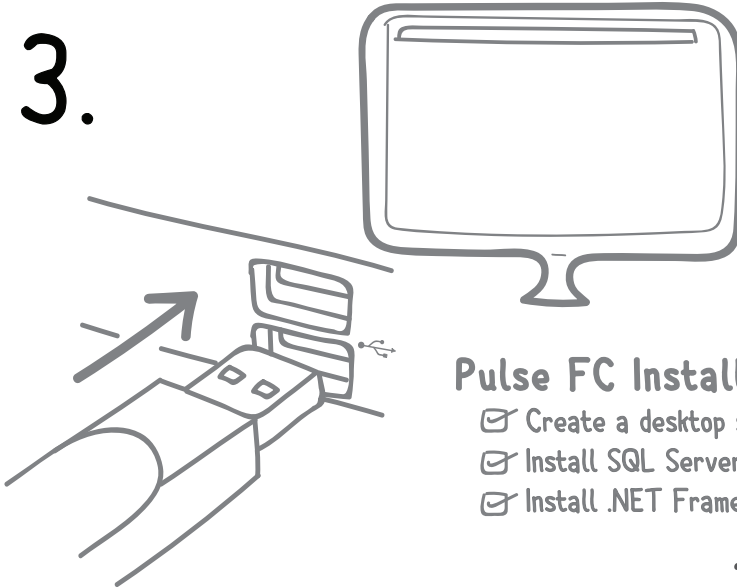


2.



Hook-up Card Reader & Install Software

3.

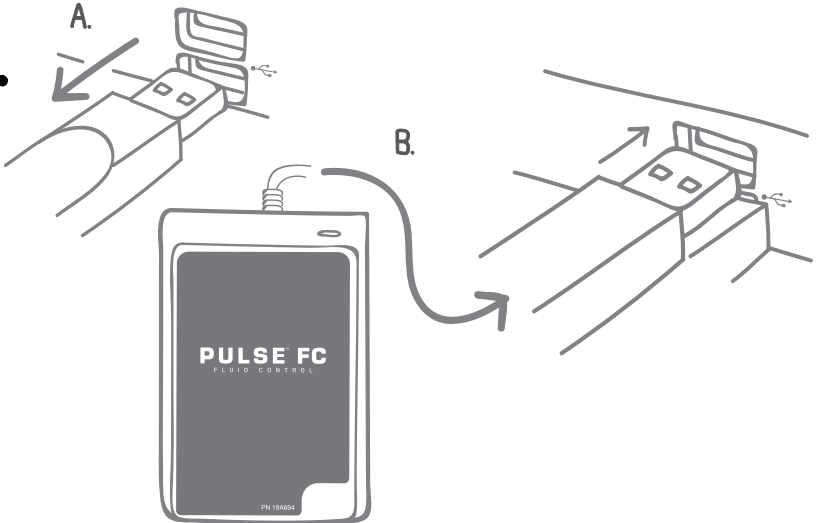


Pulse FC Installer.exe

- Create a desktop shortcut
- Install SQL Server LocalO8
- Install .NET Framework



4.



5.

A. **End User License Agreement**

B. [Pulse FC Privacy Policy](#)

C. I have read and I agree to the following : End User License Agreement
Pulse FC Privacy Policy

D. **I agree**

Register

E.

Back **Next**

F.

Activation

Please enter your activation code:

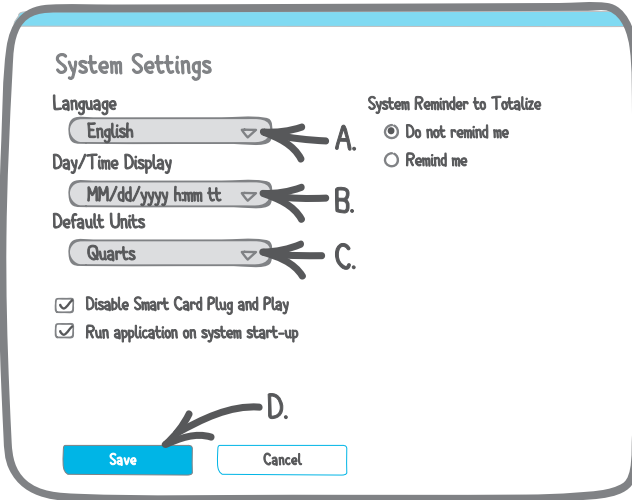
G. Enter Your Specific Activation Key from back of booklet

Back **Activate**

H.

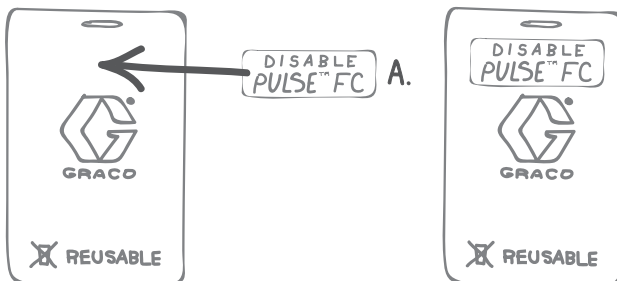
System Settings

6.



Create Pulse FC Disable Card

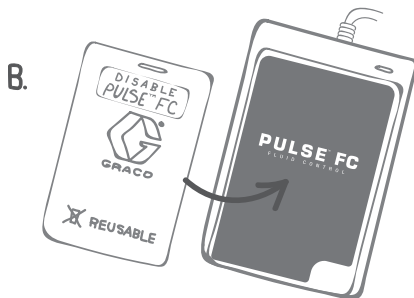
7.



Pulse FC compatible devices set to Pulse FC mode can only be used with the PC that created the profile cards

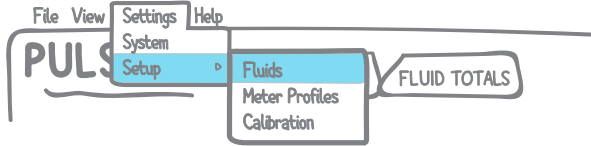
To restore a device to preset mode or move the device to another Pulse FC system, a Disable Pulse FC card is required

Create a Disable Pulse FC Card and keep it somewhere safe with your software activation key!



Configure Fluids

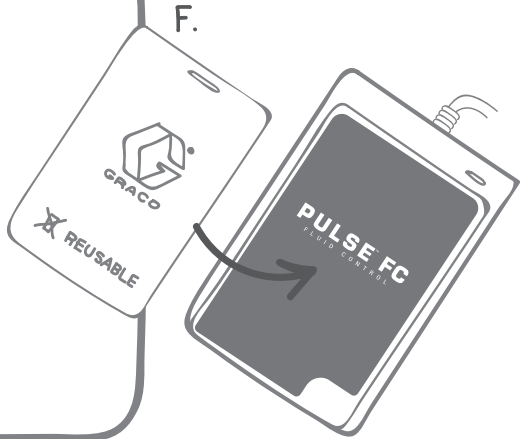
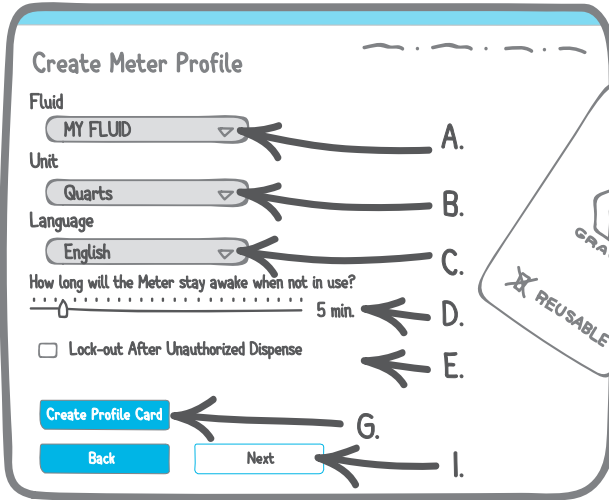
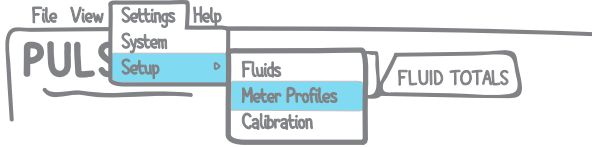
8.



A screenshot of the "Create New Fluid" dialog box. The title is "Create New Fluid". Below the title is the instruction "Please enter the name of the fluid to create". There is a text input field labeled "Fluid Name" containing the text "MY FLUID". Below this is a blue button labeled "Add Fluid". Below the "Add Fluid" button is a list of fluids, with the first entry being "15W30 MY FLUID". Below the list are two buttons: a blue "Back" button and a white "Next" button. Four callouts labeled A, B, C, and D point to the "Fluid Name" field, the "Add Fluid" button, the "15W30 MY FLUID" entry, and the "Next" button, respectively.

Configure Meter Profile Cards

9.



H. Configure Meter
Can be used on
multiple meters.



RESET:
(if needed)

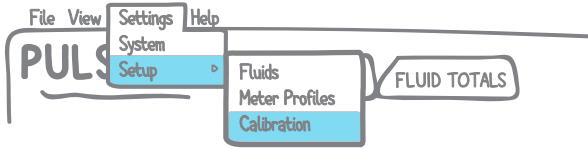
A. DISPENSE
TOTAL
UTILITY MENU

B. DEVICE INFORMATION
RESET
SET-UP
GO BACK

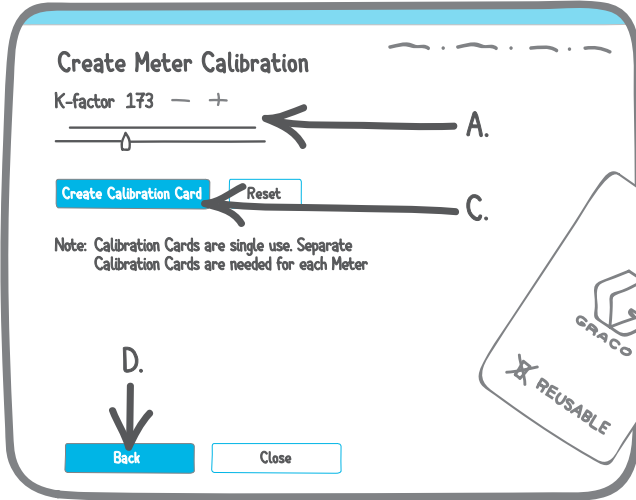


Configure Calibration Cards (optional)

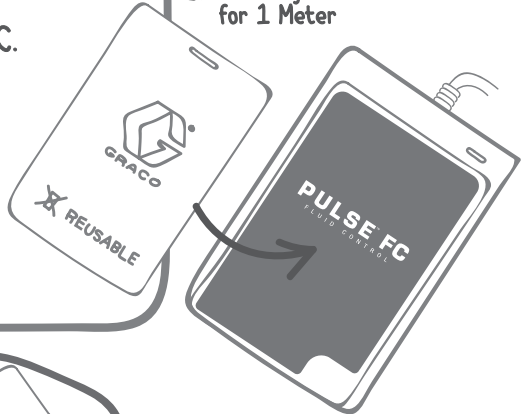
10.



Need 1 card per Meter



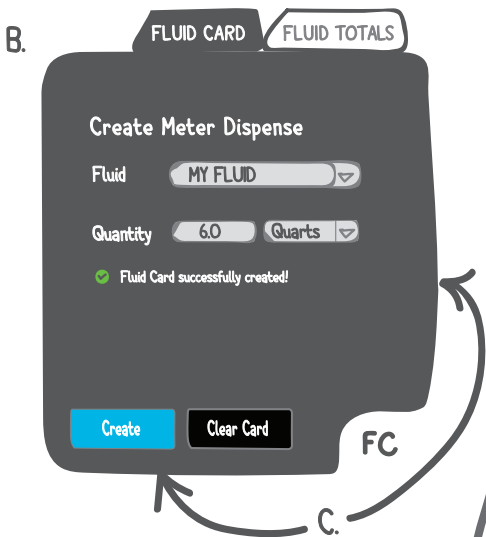
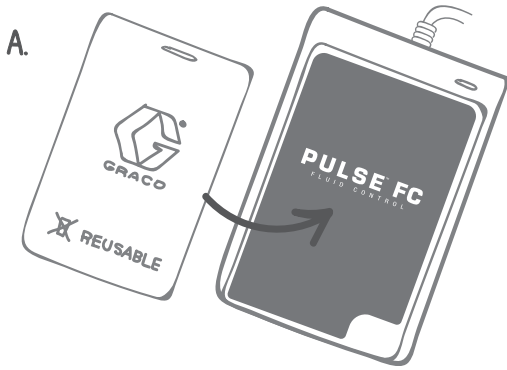
B. Can only be used for 1 Meter



E. Calibrate Meter



Create and Perform a Dispense



Actual Dispense Totals

A. Same as create a dispense.

B.

FLUID CARD FLUID TOTALS

Create Fluid Totals Card

Touch Fluid Totals Card to each Meter you wish to report back total amount of fluid used. Place Fluid Totals Card on Pulse FC Programmer when done.

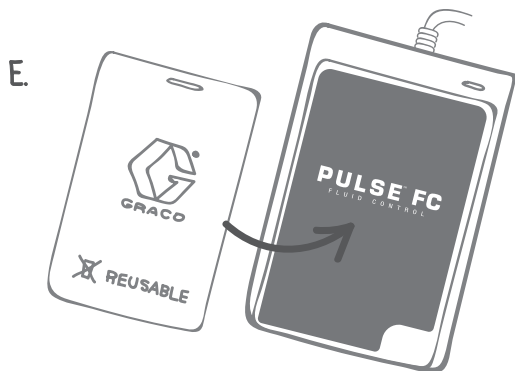
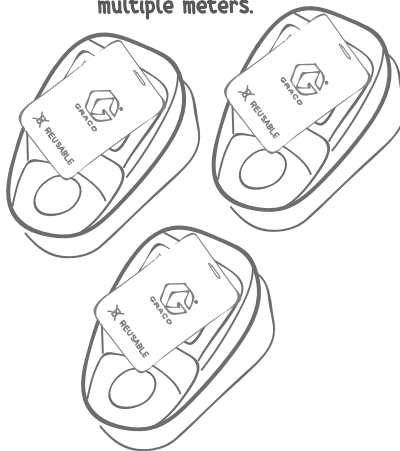
✔ Fluid Totals Card successfully created!

Create Clear Card

FC

C.

D. Can be used on multiple meters.



WARNING

Do not discard, this key is required to use the Pulse FC Software.



Activation Key Sticker

DISCOVER THE PULSE DIFFERENCE



Simplicity



Accountability



Scalability



Mobility

for more information visit [GracoPulse.com](https://www.GracoPulse.com)