

Light Tower Kit

3A4031B

EN

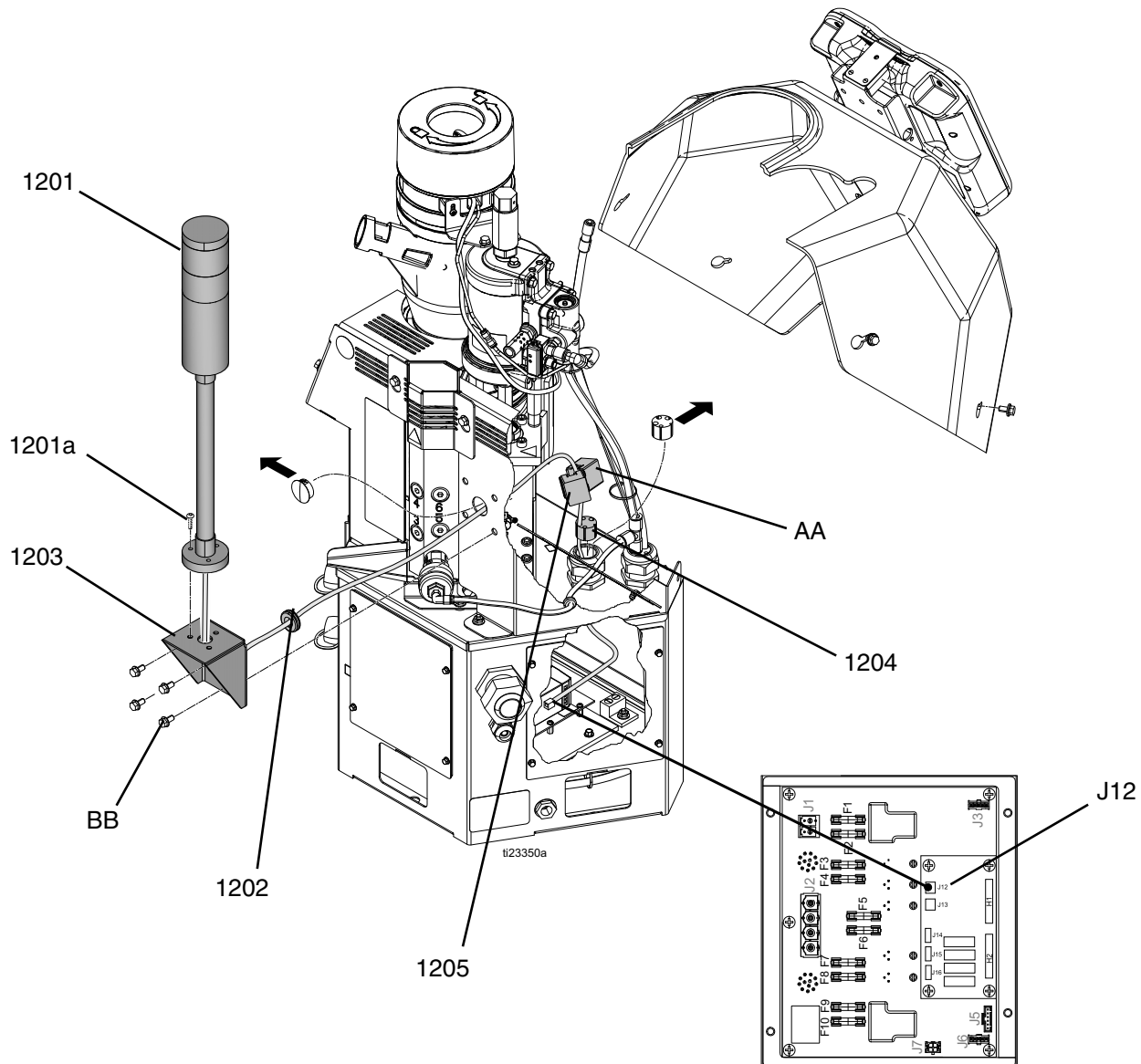
For installing the light tower kit on InvisiPac® HM25 and HM50 Tank-Free™ Hot Melt Delivery System.

Kit No. 24R226



Important Safety Instructions

Read all warnings and instructions in the InvisiPac® HM25 and HM50 Tank-Free™ Hot Melt Delivery System Instructions manual. Save all instructions.



Light Tower Kit Installation

The light tower enables someone away from the system to quickly see whether the system is inactive or OFF (no lights), warming up (flashing green), at temperature (solid green), or has an active error (red).

24R226 Parts

Ref	Part	Description	Qty
1201	16T102	LIGHT, tower, red and green	1
1201a	---	SCREW	3
1202	---	GROMMET, single cable	1
1203	16K322	BRACKET, light tower	1
1204	---	GROMMET, multiple wires	1
1205	125835	CLIP, ferrite bead	1

--- Not for sale.

Light Tower Kit Installation



1. Turn main power switch OFF.
2. Disconnect cable from ADM, push cable through plastic shroud, then remove shroud from system.
3. Remove existing grommet (AA) from electrical enclosure then install new grommet (1204) in its place.
4. Insert grommet (1202) into hole on the light tower bracket (1203).
5. Remove bolts (BB) from metal shroud on the system then use the bolts (BB) to secure bracket (1203) to metal shroud.
6. Route light tower cable through hole in bracket (1203) then use supplied light tower screws (1201a) to install light tower (1201).
7. Remove electrical enclosure front access door.
8. Route light tower cable through the other hole in the bracket (1203), then through the grommet (1204) into the electrical enclosure.
9. Connect light tower cable to MZLP connector labeled J12.

Graco Information

Sealant and Adhesive Dispensing Equipment

For the latest information about Graco products, visit www.graco.com.

For patent information, see www.graco.com/patents.

TO PLACE AN ORDER, contact your Graco distributor, go to www.graco.com and select “Where to Buy” in the top blue bar, or call to find the nearest distributor.

If calling from the US: 800-746-1334

If calling from outside the US: 0-1-330-966-3000

All written and visual data contained in this document reflects the latest product information available at the time of publication. Graco reserves the right to make changes at any time without notice.

Original instructions. This manual contains English. MM 3A4031

Graco Headquarters: Minneapolis

International Offices: Belgium, China, Japan, Korea

GRACO INC. AND SUBSIDIARIES • P.O. BOX 1441 • MINNEAPOLIS MN 55440-1441 • USA
Copyright 2016, Graco Inc. All Graco manufacturing locations are registered to ISO 9001.

www.graco.com

Revision B, February 2017