

UniXact[®] Automated Dispense Platform

3A4061G

EN

For automated, programmable, precision micro-dispensing. For professional use only.

Not approved for use in explosive atmospheres or hazardous locations.

Models:

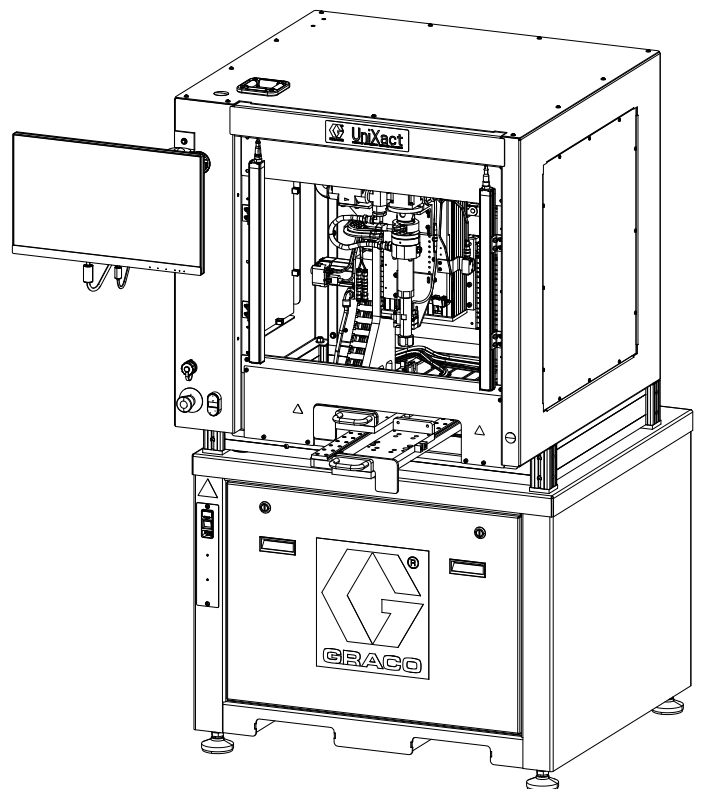
C-300

C-500



Important Safety Instructions

Read all warnings and instructions in this manual and in the UniXact Automated Dispense Platform Setup and Operation manual 3A3649. Save all instructions.



C-300 Shown



Contents

Models	3
Related Manuals	3
Parts	4
C-300 and C-500 Base Systems	4
C-300 Module Base, 25C202	9
C-500 Module Base, 25C273	13
Axis Z Actuators, 25C275, 25C276	18
Mounting Module No Z Axis, 25C066	20
Valve Holders	21
C-300 Guard Assembly, 25C007, 25C008, 25C009	32
C-500 Guard Assembly, 25C010, 25C011	37
Needle Find Sensor, 25C271	41
Blow Off Needle Module, 25C272	42
Part In Place Sensor, 25C313	43
Level Sensor Connections	44
Z-Height Sensor Kit, 25C476	45
Supply System Connections	46
Vision Camera Kit, 25C477	48
Cable Tracks	49
Cable Bundles	50
Air Controls	52
Air Inlet Control, 25C297	54
Motion Table Input/Output Board, 25C314	55
Cord Sets	56
Appendix A - Wiring Reference	57
Appendix B - Wiring Schematics	58
Graco Standard Warranty	64

Models

Part No.	Air Pressure Operating Range	Description	Approvals
C-300	80-100 psi (0.6-0.7 MPa, 5.5-7 bar)	300 mm x 300 mm automated dispense table	CE
C-500	80-100 psi (0.6-0.7 MPa, 5.5-7 bar)	500 mm x 500 mm automated dispense table	

Related Manuals

Part	Description
3A3649	UniXact [®] Automated Dispense Platform Setup - Operation Manual

NOTE: See manual 3A3649 for related valve and supply system manuals.

Parts

C-300 and C-500 Base Systems

Model C-300 Shown (with front access panel removed to view electronics)

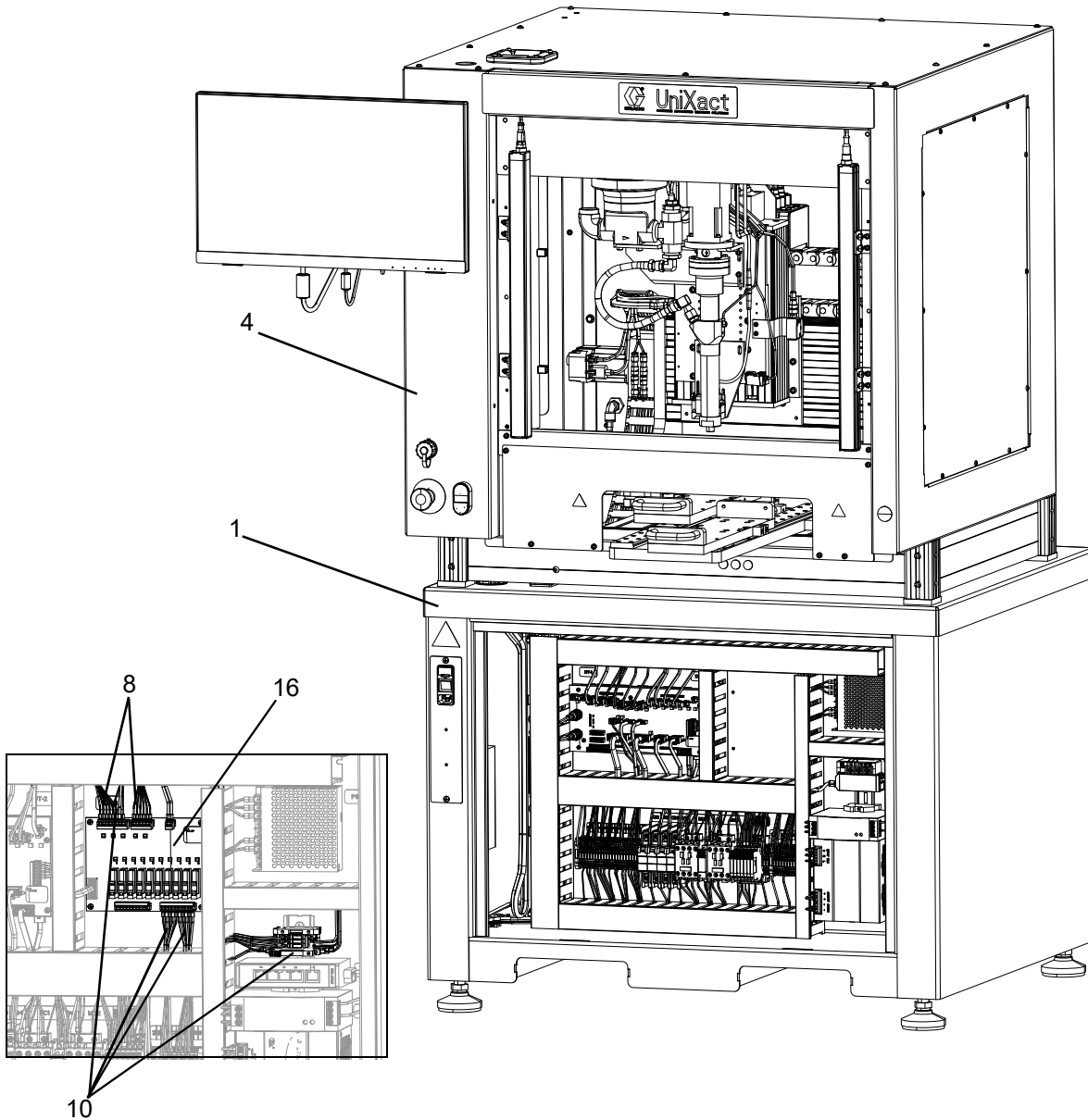


FIG. 1: C-300 and C-500 System Parts 1

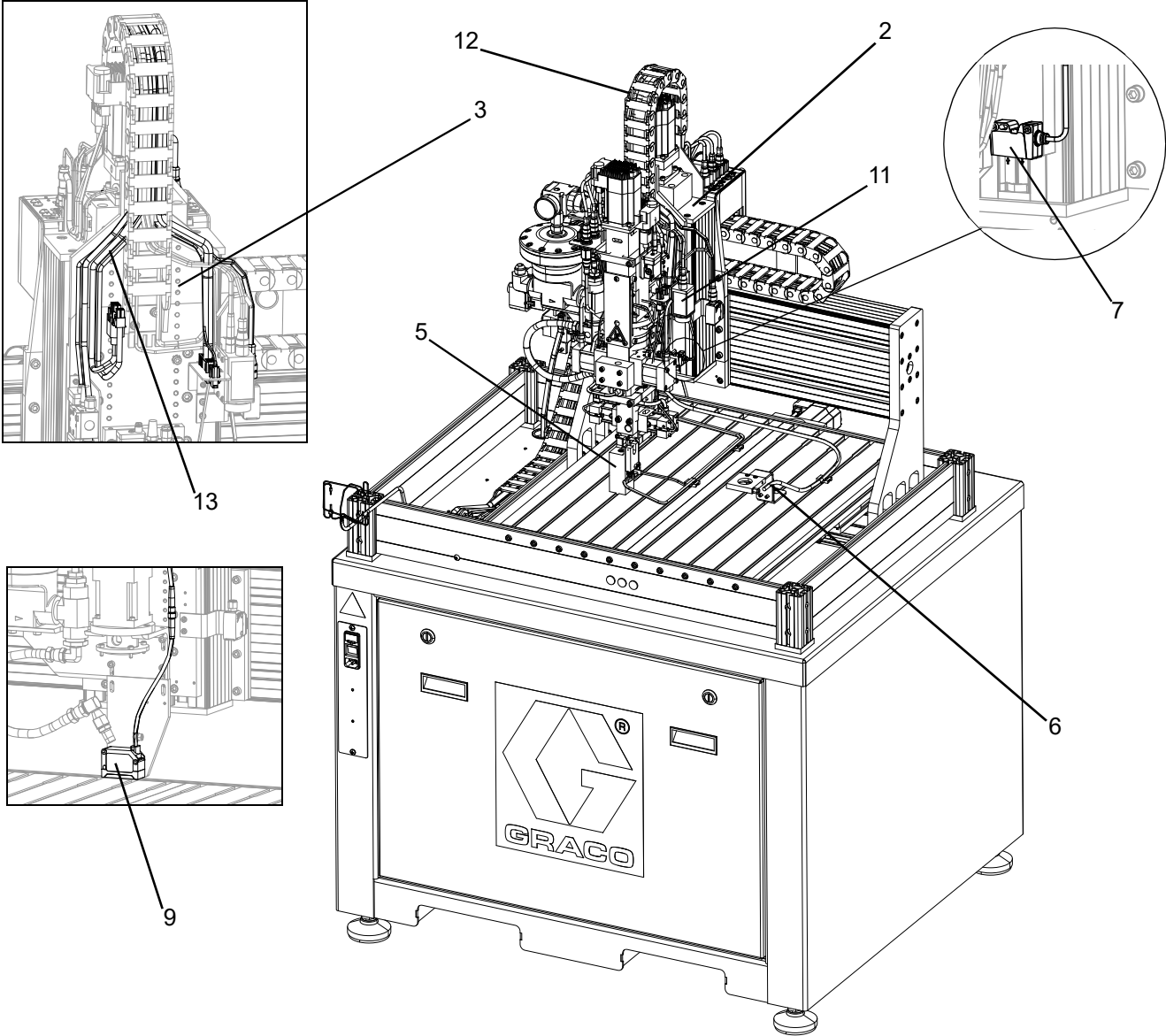


FIG. 2: C-300 and C-500 System Parts 2 (with Cover Removed)

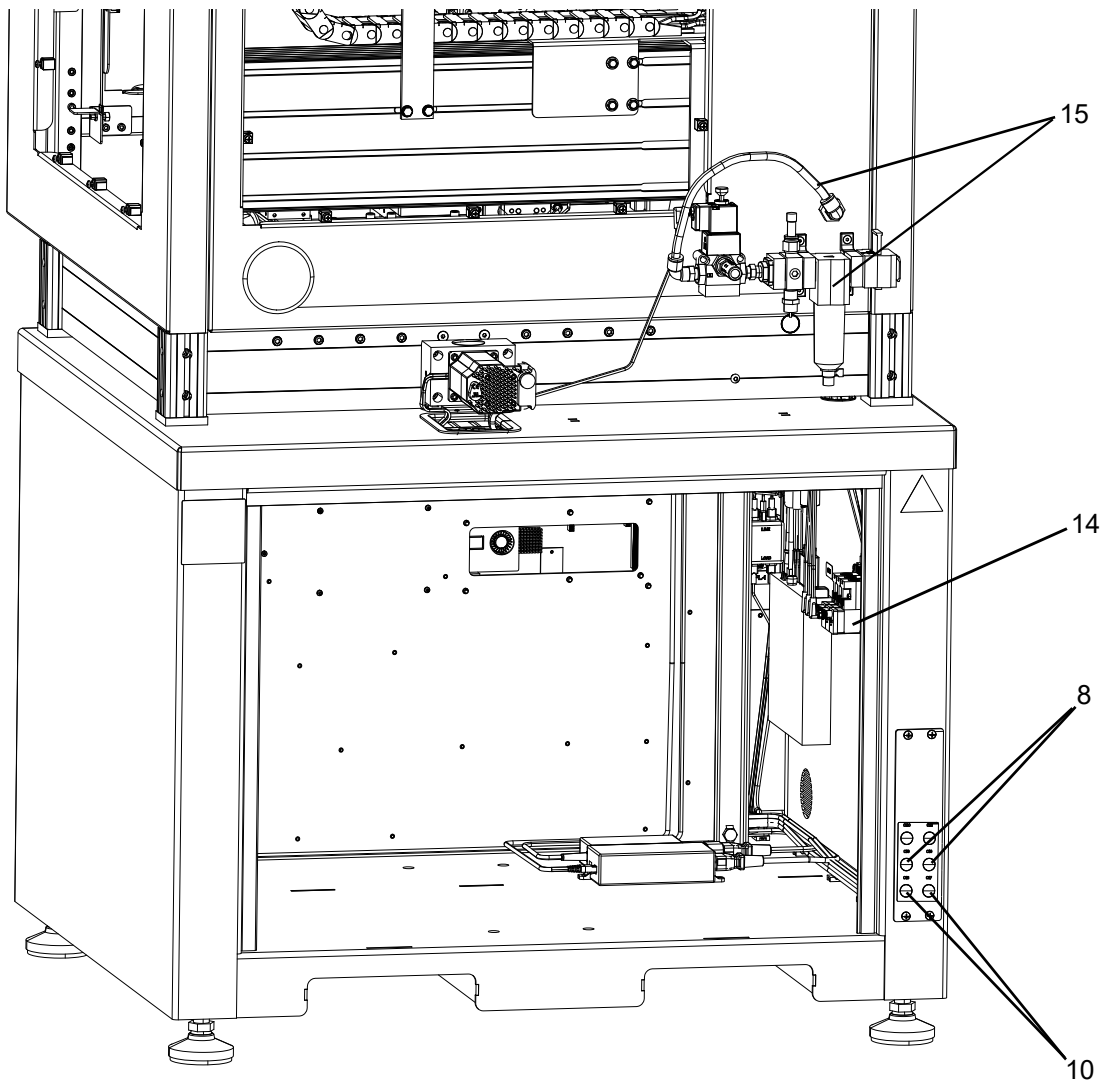


FIG. 3: C-300 and C-500 System Parts 3 (Rear View)

Base Systems Parts

Ref	Part	Description	Quantity
1	25C202	MODULE, base, xy, c300	1
	25C273	MODULE, base, xy, c500	1
2	25C275	ACTUATOR, axis, z, 75mm	1
	25C276	ACTUATOR, axis, z, 175mm	1
3	25C066	MODULE, mounting, no z-axis	1
	25C175	HOLDER, valve, pd44	1
	25C174	HOLDER, valve, 1053	1
	25C459	HOLDER, valve, 1093	1
	25E453	HOLDER, valve, pc pump, GPC	1
	25C180	HOLDER, valve, 1206	1
	25C179	HOLDER, valve, 710/jet	1
	25C177	HOLDER, valve, md2	1
	25C178	HOLDER, valve, endure, ambient	1
	4	25C008	GUARD, assy, xyz, lc short
25C009		GUARD, assy, xyz, door	1
25C007		GUARD, assy, xyz, lc long	1
25C010		GUARD, assy, xyz, c500, long	1
25C011		GUARD, assy, xyz, c500, short	1
5	25C271	MODULE, sensor, needle find, xyz	1
6	25C272	MODULE, blow off, needle, xyz	1
7	25C313	MODULE, sensor, part in place, xyz	1
	25C429	MODULE, bulkhead, lvl, 1k, sgl	1
	25C430	MODULE, bulkhead, lvl, 1k, dbl	1
	25C431	MODULE, bulkhead, lvl, 2k, sgl	1
	25C432	MODULE, bulkhead, lvl, 2k, dbl	1
8	25C476	KIT, z-height sensor	1
9	25C433	MODULE, bulkhead, pr70	1
	25C434	MODULE, bulkhead, pcf	1
	25C435	MODULE, bulkhead, hfr	1
	25C436	MODULE, feed, ext, cart	1
	25C437	MODULE, feed, ext, dyna	1
10	25C477	KIT, vision camera	1
11	25C309	CABLE, track, z, 75mm, theta	1
	25C310	CABLE, track, z, 75mm, no theta	1
	25C311	CABLE, track, z, 175mm, theta	1
	25C312	CABLE, track, z, 175mm, no theta	1

Parts

Ref	Part	Description	Quantity
	25C351	MODULE, bundle, cable, z, pd, c3	1
	25C352	MODULE, bundle, cable, z, 1053, c3	1
	25C353	MODULE, bundle, cable, z, pc, c3	1
	25C354	MODULE, bundle, cable, z, 1206, c3	1
	25C355	MODULE, bundle, cable, z, 710, c3	1
	25C356	MODULE, bundle, cable, z, adv, c3	1
	25C357	MODULE, bundle, cable, z, md2, c3	1
	25C358	MODULE, bundle, cable, z, end, c3	1
	25C359	MODULE, bundle, cable, z, pd, c5	1
	25C360	MODULE, bundle, cable, z, 1053, c5	1
	25C361	MODULE, bundle, cable, z, pc, c5	1
13	25C362	MODULE, bundle, cable, z, 1206, c5	1
	25C387	MODULE, bundle, cable, z, 710, c5	1
	25C388	MODULE, bundle, cable, adv, c5	1
	25C389	MODULE, bundle, cable, md2, c5	1
	25C399	MODULE, bundle, cable, end, c5	1
	25C400	MODULE, bundle, cable, no z, pd	1
	25C401	MODULE, bundle, cable, no z, 1053	1
	25C402	MODULE, bundle, cable, no z, pc	1
	25C403	MODULE, bundle, cable, no z, 1206	1
	25C404	MODULE, bundle, cable, no z, 710	1
	25C405	MODULE, bundle, cable, no z, adv	1
	25C406	MODULE, bundle, cable, no z, md2	1
	25C407	MODULE, bundle, cable, no z, end	1
	24X853	CONTROL, air	1
14	25C185	CONTROL, air, 2 solenoid	1
	25C186	CONTROL, air, 1 solenoid	1
	25C308	CONTROL, air, 710, unixact	1
15	25C297	MODULE, control, inlet, air	1
16	25C314	KIT, motion table, i/o board	1
	121055	CORD SET, us, mx, pr, ca, tw, 115v, 10a	1
	121054	CORD SET, us, 250v, 10a, 10 ft	1
	121056	CORD SET, fr, ger, is, nl, no, tr, 250v	1
	121057	CORD SET, uk, ie, my, sg, 250v, 10a	1
17*	121058	CORD SET, israel, 250v, 10a	1
	124864	CORD SET, adptr, australia, 8 ft lg	1
	124861	CORD SET, adptr, italy, 8 ft lg	1
	124863	CORD SET, adptr, switzerland, 8 ft lg	1
	124862	CORD SET, adptr, denmark, 8 ft lg	1
	121060	CORD SET, s africa, india, 250v, 16a	1

* Not Shown.

C-300 Module Base, 25C202

⚠ Affix Velcro tape to the unlabeled side of the power pack supplied with the control computer (agency markings and part information should be visible) and secure it to the location shown.

⚠ Torque to 14-15.5 ft-lb (19-21 N•m).

⚠ Torque to 8.2-9.6 ft-lb (11-13 N•m).

⚠ Snug bolt, then tighten 1/4 turn.

⚠ Apply thread sealant.

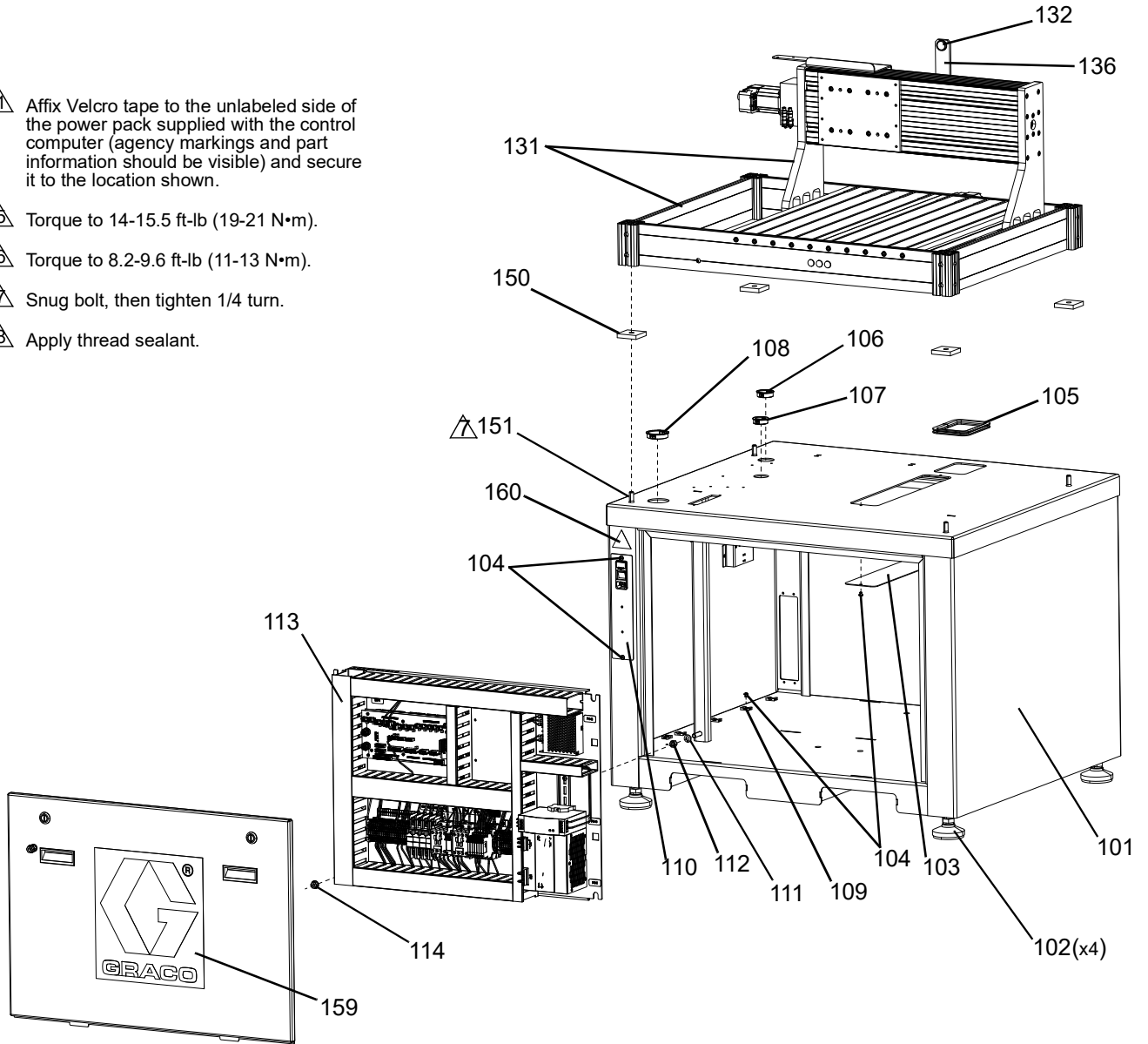


FIG. 4: Module Base 25C202 Front View

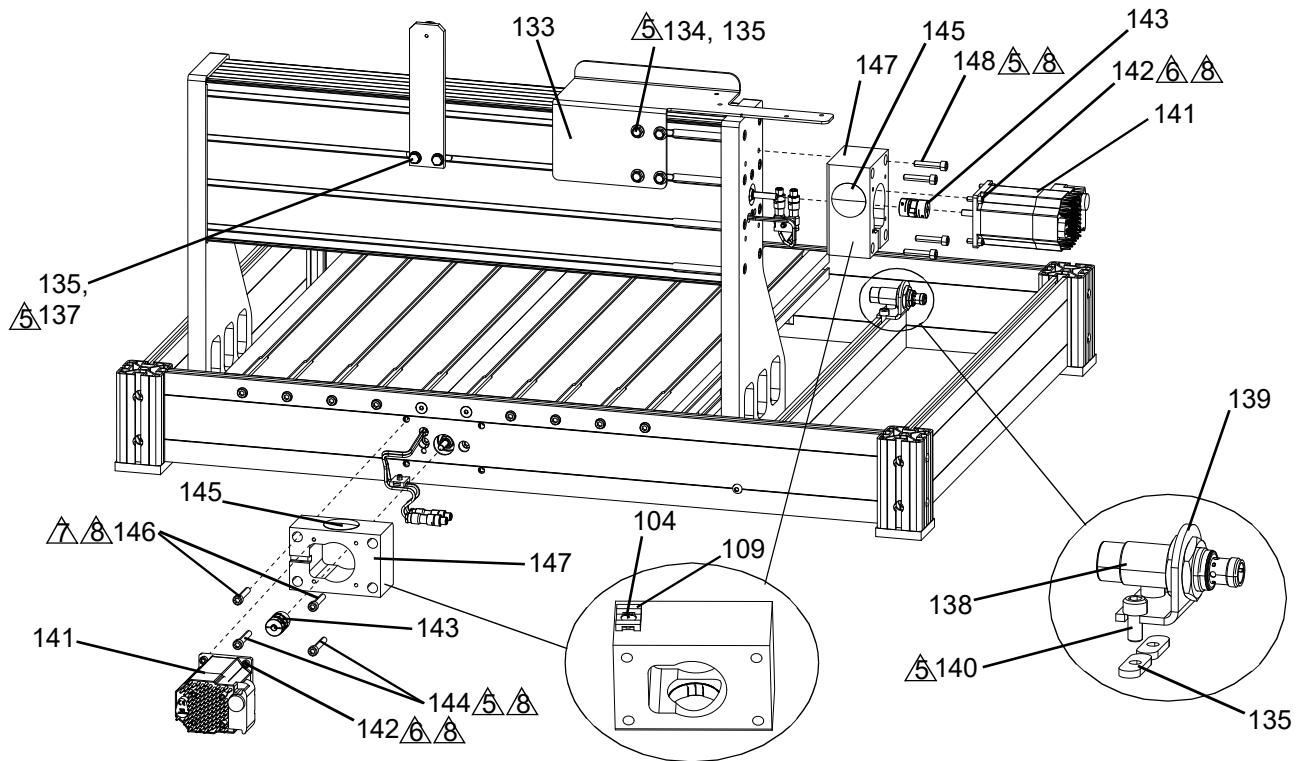


FIG. 5: Rear View of Gantry Table

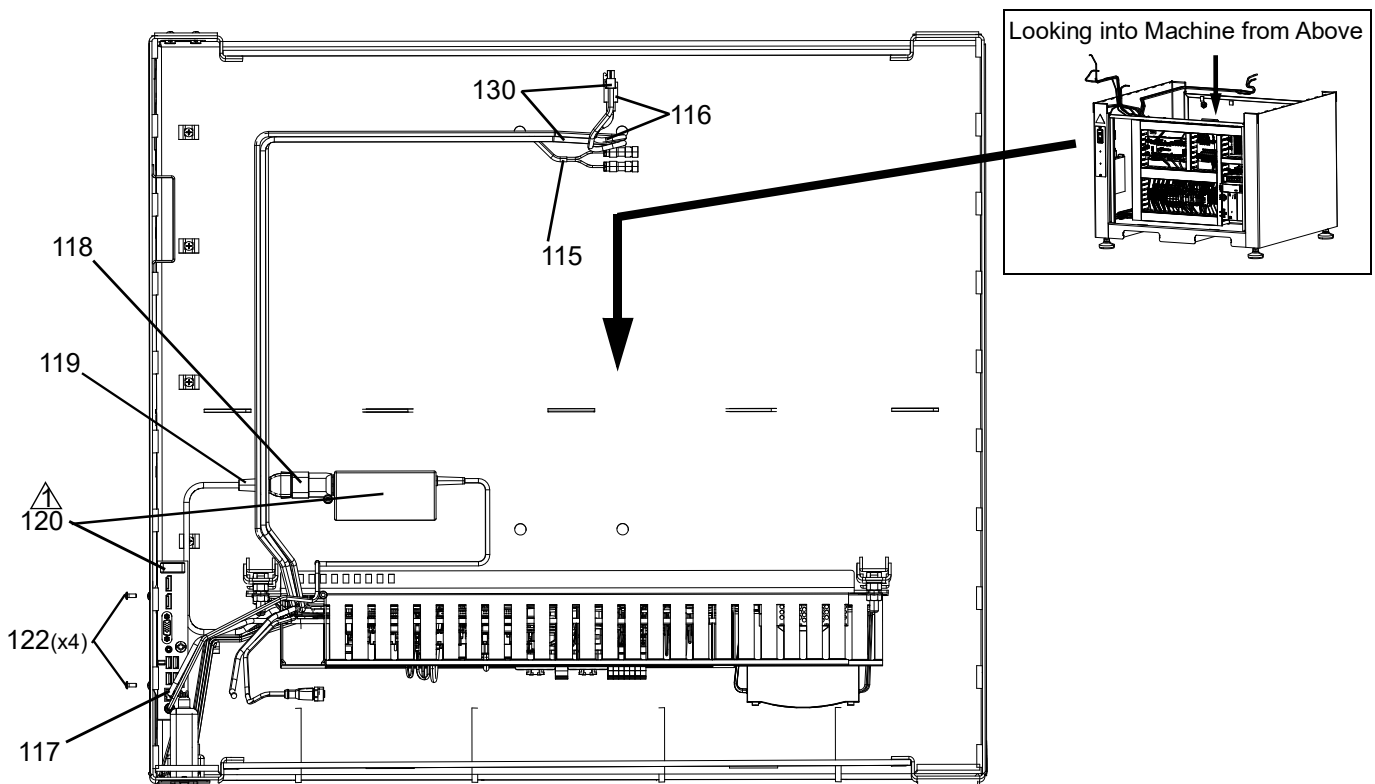


FIG. 6: View from Above with Top Panel Removed

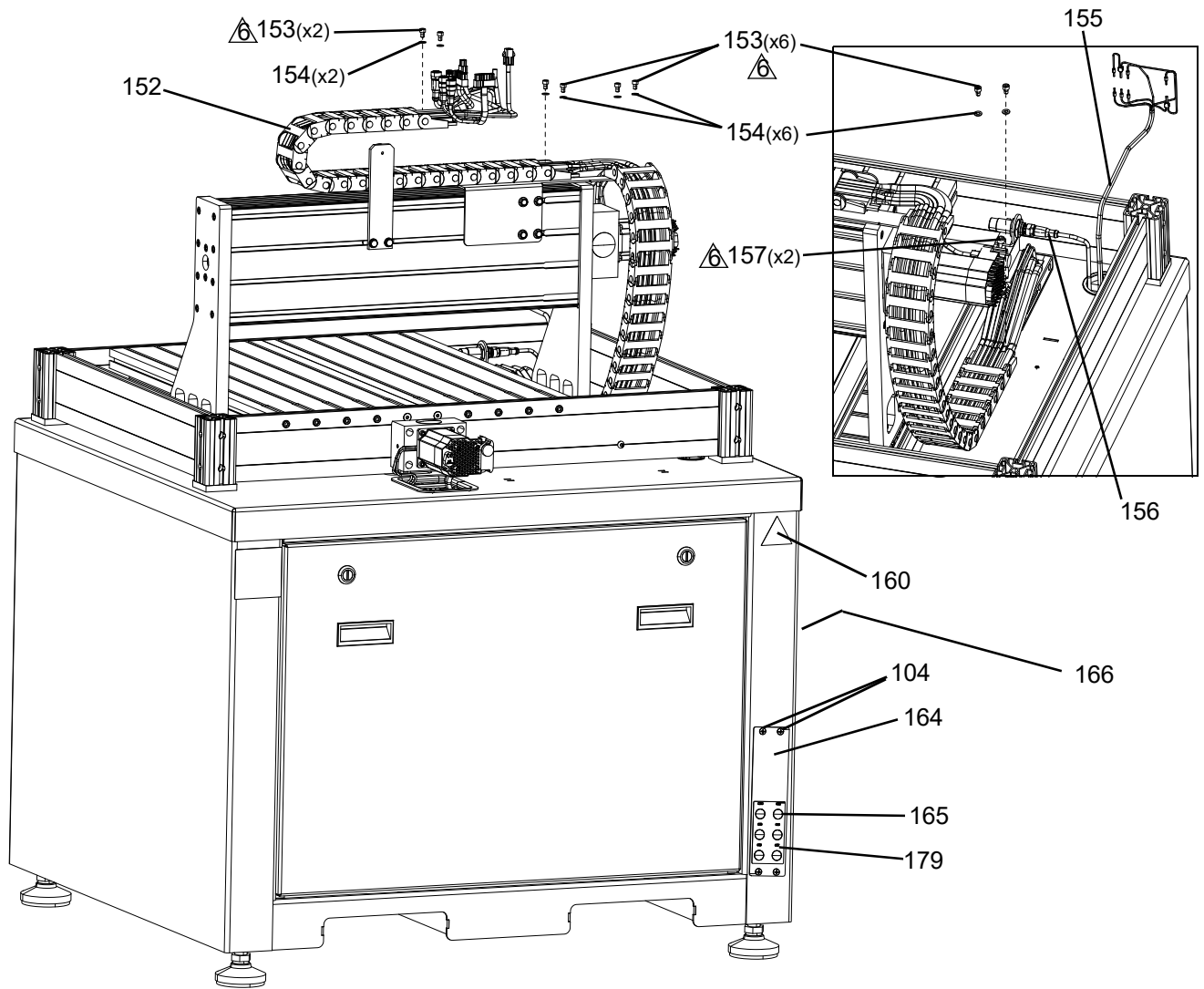


FIG. 7: Module Base 25C202 Rear View

C-300 Module Base Parts

Ref	Part	Description	Quantity
101	25A115	FRAME, base, xyz	1
102	96/0541/99	ADJUSTER, levlr, stem, 3/4-10,2.00lg	4
103	17F951	PLATE, cover, painted	1
104	105901	SCREW, mach, pnh	21
105	123424	GUARD, trim, edge	1.6 ft
106	123589	BUSHING, wire protector, snap-in	1
107	123679	BUSHING, wire protector, 1 3/8 od	1
108	124128	BUSHING, wire protector, snap-in	1
109	123452	HOLDER, anchor, wire tie, nylon	13
110	25A121	MODULE, ac pwr, filter, xyz	1
111	100133	WASHER, lock, 3/8	4
112	100307	NUT, hex	4

Parts

Ref	Part	Description	Quantity
113	25C203	MODULE, panel, elec, xyz, c300	1
114	123396	NUT, flange, serrated, 3/8-16	4
115	17E262	HARNESS, xyz, pwr, limits, y	1
116	17J448	HARNESS, motion table,motor, y	1
117	17E169	CABLE, ethernet, 5 ft, cat 5e	1
118	128770	ADAPTER, pwr, iec, c14 to c5	1
119	17E370	HARNESS, pwr,18 awg, iec, c13, locking	1
120	128765	CONTROL, computer, mini	1
121	128805*	TAPE, velcro, 1 in. x 3 in., black	1
122	105335	SCREW, mach, pnh	4
129	114958	STRAP, tie	20
130	17E197	HARNESS, motion table, power, y	1
131	17E208	TABLE, gantry, xy, qd limits	1
132	129364	LENS, prismatic, reflector	1
133	17G028	BRACKET, mtg, igus, x-axis, painted	1
134	127047	SCREW, mach, hex, flange, m6 x 1 x 10 mm	4
135	17K042	NUT, tee, m6	8
136	17M788	BRACKET, reflector mounting	1
137	124709	SCREW, hex hd, flange	2
138	128348	SENSOR, barrel, m18 x 1, pnp, no	1
139	17L960	BRACKET, angle, sensor, barrel y	1
140	107530	SCREW, cap, sch, hex	2
141	25A834	KIT, motor, servo, x/y axis	2
142	108425	SCREW, cap, sch	8
143	128317	COUPLING, motor, isel	2
144	129215	SCREW, cap, shc, m6-1 x 35, cs, zinc	2
145	124334	PLUG, hole, 1.375 in. dia, blk	2
146	117030	SCREW, shcs m6 x 40	2
147	17F737	BLOCK, motor mounting	2
148	110580	SCREW, cap, socket hd	4
150	17F840	PAD, damping, actuator, .375 thk	4
151	127048	SCREW, mach, hex, flange, m10 x 1.5 x 2	4
152	25C204	MODULE, cable, track, xy, c300	1
153	121224	SCREW, shcs, m5-.8 x 8 mm	8
154	117017	WASHER	8
155	17E388	HARNESS, xyz, e-stop, pwr on	1
156	17E386	HARNESS, motion table, mute y, front	1
157	108326	SCREW	2
159	16G195	LABEL, vrm, graco logo	1
160	196548	LABEL, warning, shock	2
164	17E436	PLATE, mtg, bulkhead	1
165	125946	PLUG, hole, .500 in.	6
166	17P267	LABEL, safety, warning	1
179	---	LABEL	1

Replacement Danger and Warning labels, tags, and cards are available at no cost.

C-500 Module Base, 25C273

- ⚠ Affix Velcro tape to the unlabeled side of the power pack supplied with the electrical panel (agency markings and part information should be visible) and secure it to the location shown.
- ⚠ Torque to 14-15.5 ft-lb (19-21 N•m).
- ⚠ Torque to 8.2-9.6 ft-lb (11-13 N•m).
- ⚠ Apply thread sealant.
- ⚠ Snug bolt, then tighten 1/4 turn.

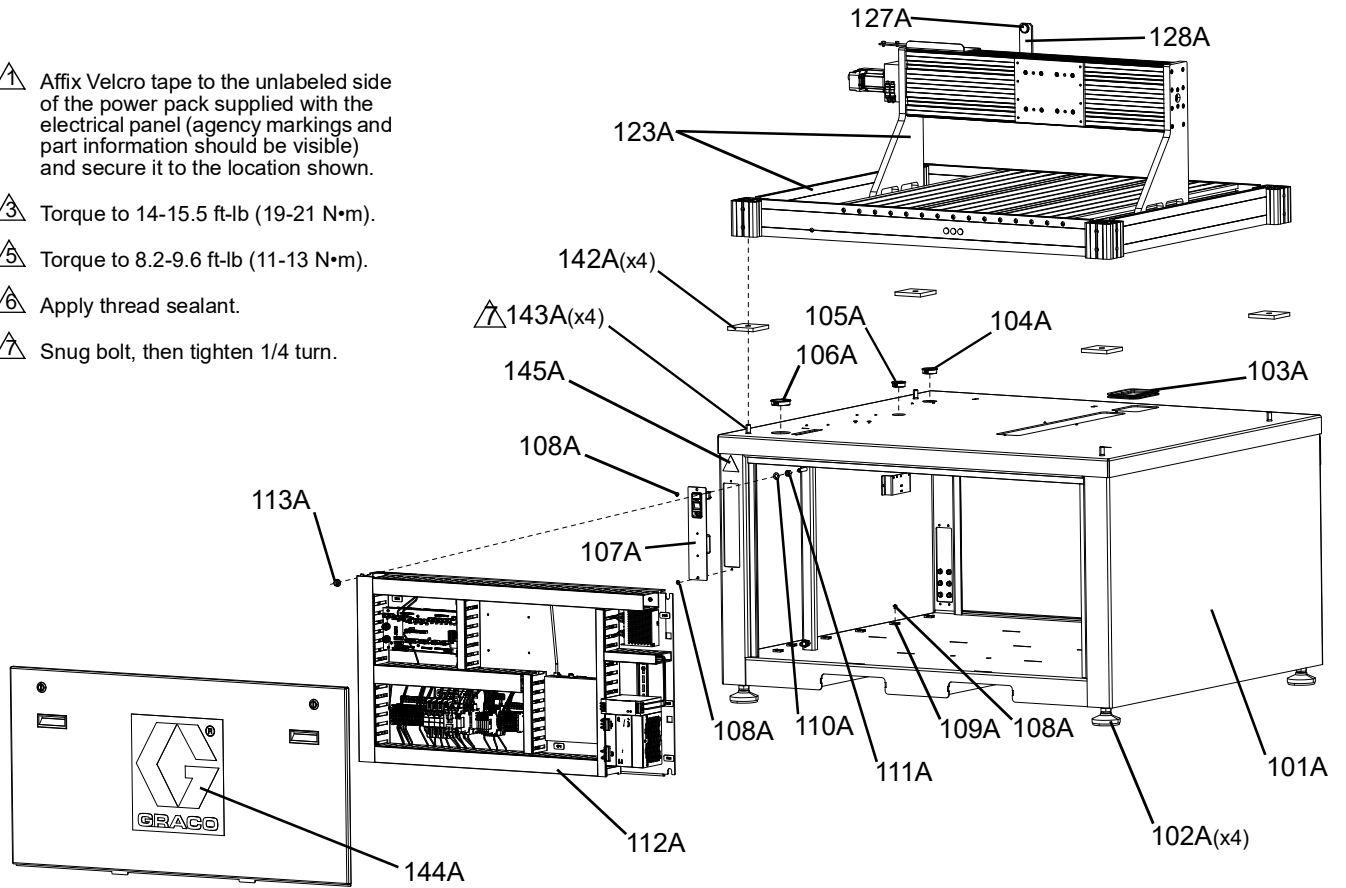


FIG. 8: Module Base 25C273 Front View

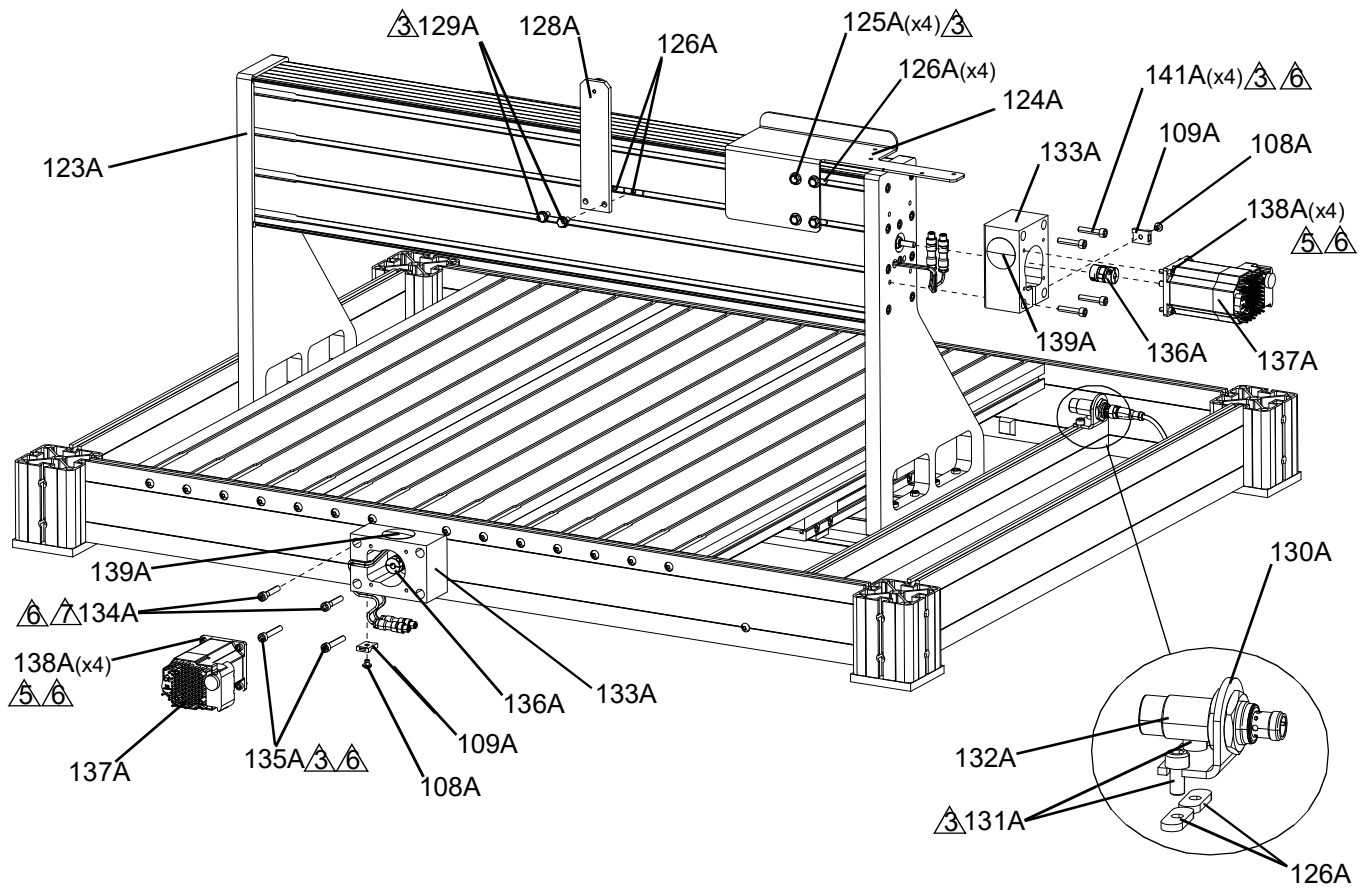


FIG. 9: Rear View of Gantry Table

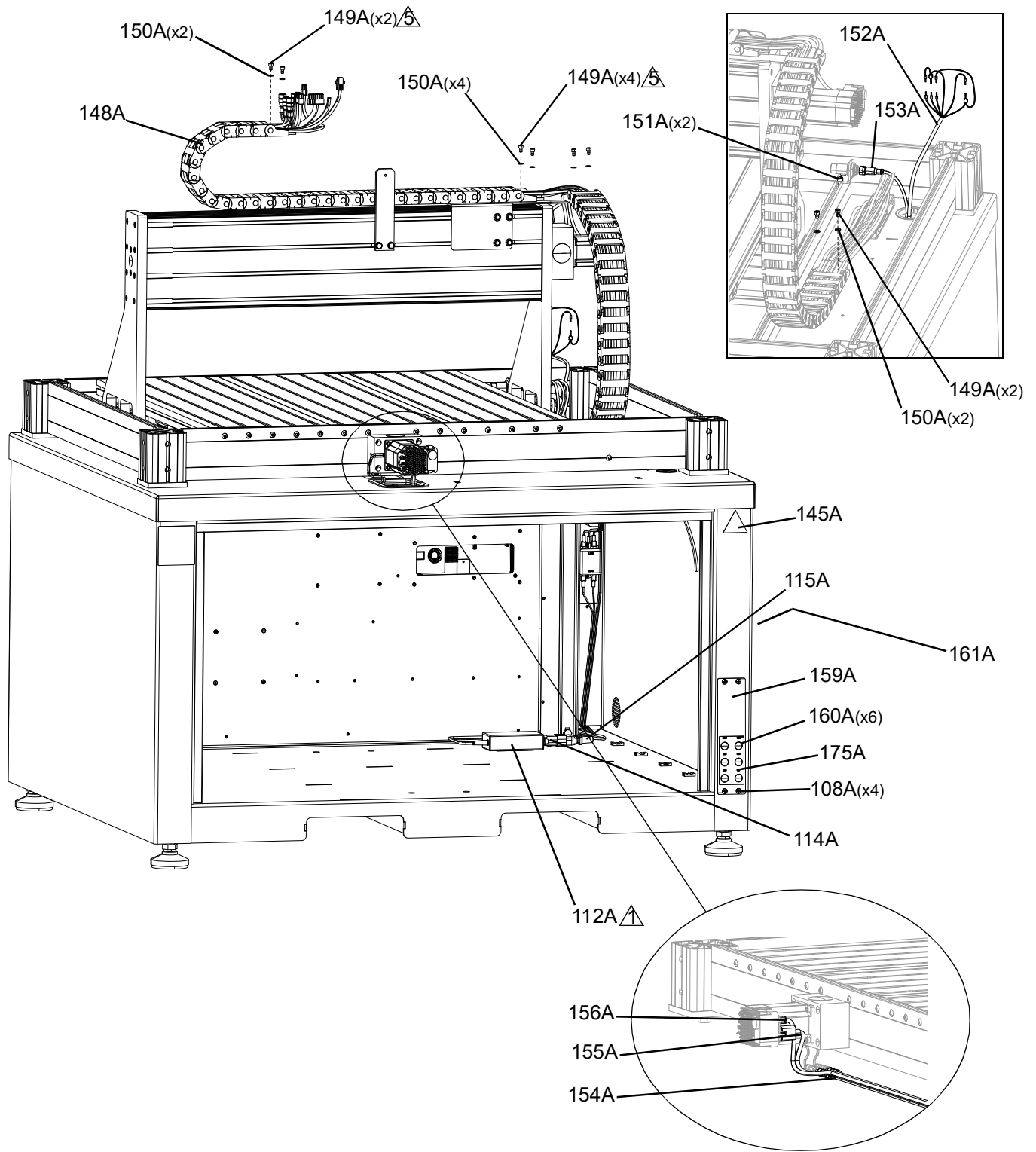


FIG. 10: Module Base 25C273 Rear View

C-500 Module Base Parts

Ref	Part	Description	Quantity
101A	25C014	FRAME, base, xyz	1
102A	96/0541/99	ADJUSTER, levlr, stem, 3/4-10, 2.00 lg	4
103A	123424	GUARD, trim, edge	1.6 ft
104A	123589	BUSHING, wire protector, snap-in	1
105A	123679	BUSHING, wire protector, 1 3/8 od	1
106A	124128	BUSHING, wire protector, snap-in	1
107A	25A121	MODULE, ac pwr, filter, xyz	1
108A	105901	SCREW, mach, pnh	21
109A	123452	HOLDER, anchor, wire tie, nylon	15
110A	100133	WASHER, lock, 3/8	4
111A	100307	NUT, hex	4
112A	25C262	MODULE, panel, elec, xyz, c500	1
113A	123396	NUT, flange, serrated, 3/8-16	4
114A	128770	ADAPTER, pwr, iec, c14 to c5	1
115A	17E370	HARNESS, pwr, 18 awg, iec, c13, locking	1
116A	128805	TAPE, velcro, 1 in. x 3 in., black	1
123A	25A429	TABLE, gantry, x, y	1
124A	17G028	BRACKET, mtg, igus, x-axis, painted	1
125A	127047	SCREW, mach, hex, flange, m6 x 1 x 10 mm	4
126A	17K042	NUT, tee, m6	8
127A	129364	LENS, prismatic, reflector	1
128A	17M788	BRACKET, reflector mounting	1
129A	124709	SCREW, hex hd, flange	2
130A	17L960	BRACKET, angle, sensor, barrel y	1
131A	107530	SCREW, cap, sch, hex	2
132A	128348	SENSOR, barrel, m18 x 1, pnp, no	1
133A	17F737	BLOCK, motor mounting	2
134A	129215	SCREW, cap, shc, m6-1 x 35, cs, zinc	2
135A	117030	SCREW, shcs m6 x 40	2
136A	128317	COUPLING, motor, isel	2
137A	25A834	KIT, motor, servo, x/y, axis	2
138A	108425	SCREW, cap, sch	8
139A	124334	PLUG, hole, 1.375 in. dia, blk	2
141A	110580	SCREW, cap, socket hd	4
142A	17E359	PAD, damping, actuator	4
143A	129216	SCREW, cap, flange, m12-1.75 x 25, cs	4
144A	16G195	LABEL, vrm, graco logo	1
145A	196548	LABEL, warning, shock	2
148A	25C274	MODULE, cable, track, xy, c500	1
149A	121224	SCREW, shcs, m5-.8 x 8 mm	8
150A	117017	WASHER	8
151A	108326	SCREW	2

Ref	Part	Description	Quantity
152A	17E388	HARNESS, xyz, e-stop, pwr on	1
153A	17E386	HARNESS, motion table, mute y, front	1
154A	17E382	HARNESS, xyz, axis, limits, y	1
155A	17E380	HARNESS, motion table, motor, y	1
156A	17E376	HARNESS, motion table, power, y	1
157A	114958	STRAP, tie	20
159A	17E436	PLATE, mtg, bulkhead	1
160A	125946	PLUG, hole, .500 in.	6
161A	17P267	LABEL, safety, warning	1
175A	---	LABEL	1

Replacement Danger and Warning labels, tags, and cards are available at no cost.

Axis Z Actuators, 25C275, 25C276

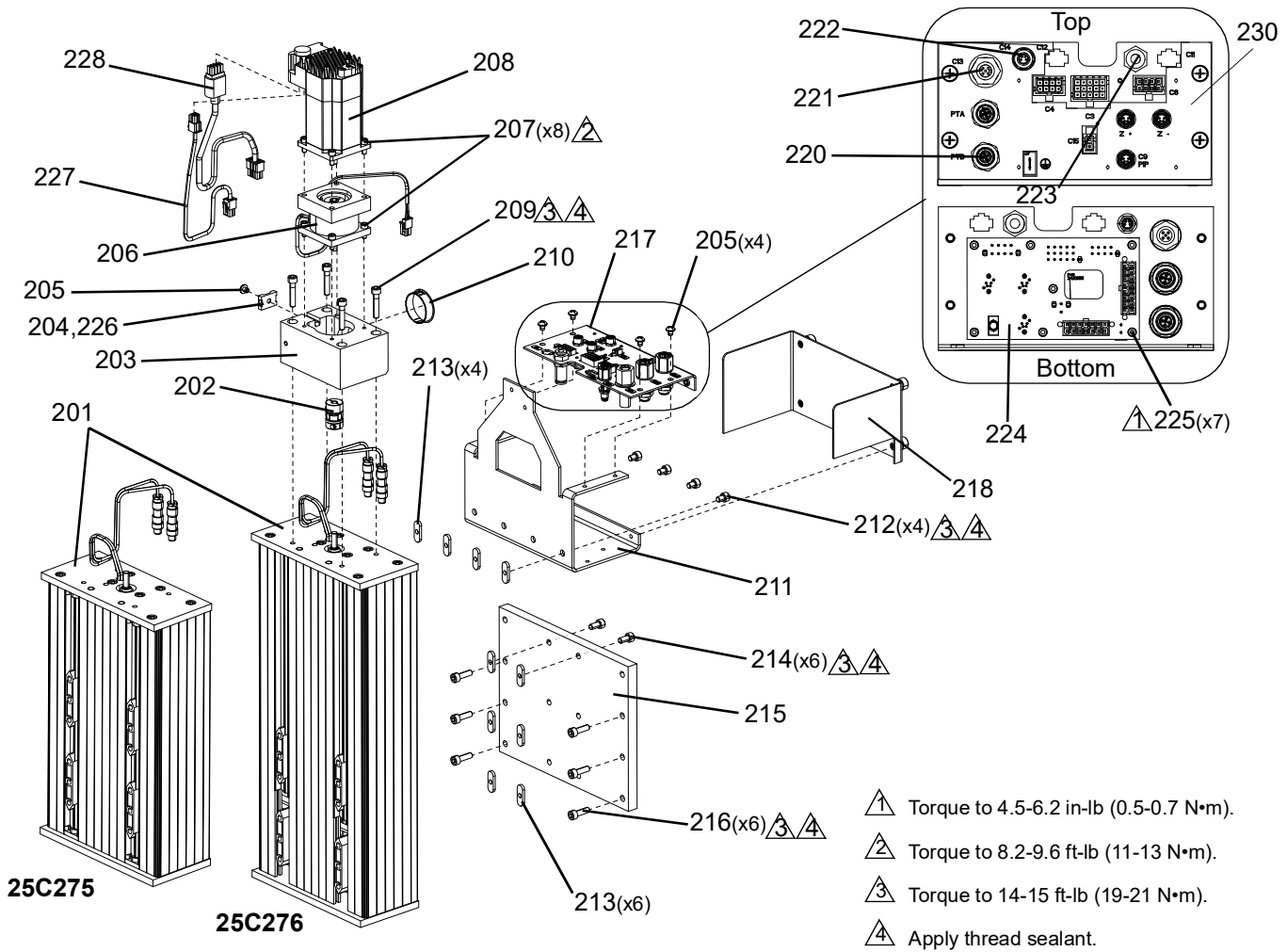


FIG. 11: Axis Z Actuators

Ref	Part	Description	25C275	25C276
201	17E321	MODULE, axis, z, 75 mm	1	
	25A430	MODULE, axis, z,		1
202	128317	COUPLING, motor, isel	1	1
203	17F737	BLOCK, motor mounting	1	1
204	123452	HOLDER, anchor, wire tie, nylon	1	1
205	105901	SCREW, mach, pnh	5	5
206	128318	BRAKE, motor, z axis	1	1
207	108425	SCREW, cap, sch	8	8
208	25C544	KIT, motor, servo, z/theta axis	1	1
209	124200	SCREW, shsc, m6-1.0 x 30, sst	4	4
210	124334	PLUG, hole, 1.375 in. dia, blk	1	1
211	17M830	BRACKET, cable track	1	1

Ref	Part	Description	25C275	25C276
212	110501	SCREW, cap, sch (m6 x 8)	4	4
213	17K042	NUT, tee, m6	10	10
214	107530	SCREW, cap, sch, hex	6	6
215	17F352	PLATE, mtg, z axis	1	1
216	513035	SCREW, cap skt hd m6 x 20 m	6	6
217	17M823	BRACKET, connector mtg, z-axis	1	1
218	17M831	COVER, cable bulkhead	1	1
220	126496	CONNECTOR, thru, m12, mx f, reverse key	2	2
221	121612	CONNECTOR, thru, m12, mx f	1	1
222	128911	CONNECTOR, thru, m8, mx f	1	1
223	104176	BULKHEAD, 1/4 t x 1/4 t	1	1
224	24X855	MODULE, gca, z-axis	1	1
225	125609	FASTENER, screw, shcs, m3 x.5 x 10, ss	7	7
226	114958	STRAP, tie	2	2
227	17J488	HARNESS, motion table, power, z	1	1
228	17J451	HARNESS, motion table, motor, z	1	1
230	---	LABEL	1	1

Mounting Module No Z Axis, 25C066

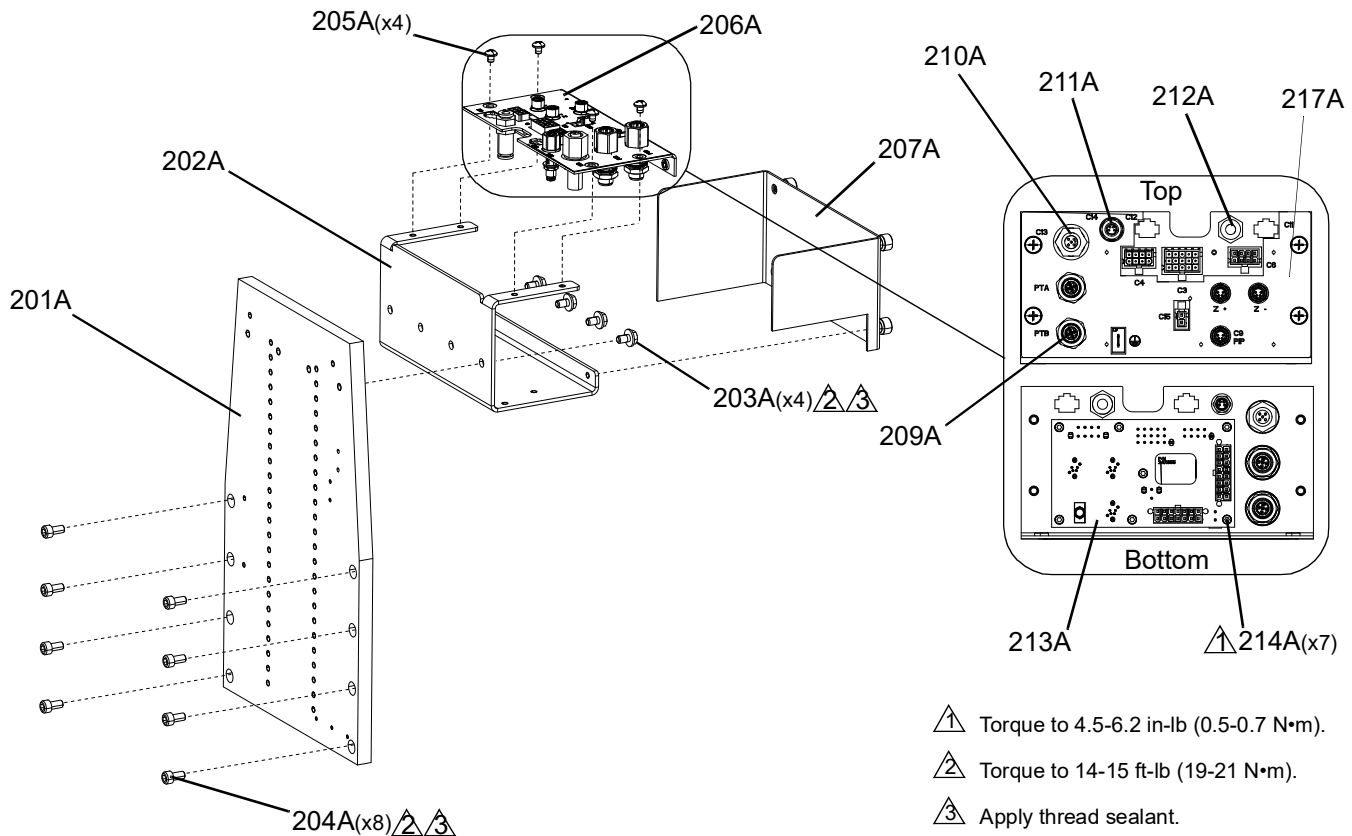


FIG. 12: Mounting Module No Z Axis

Ref	Part	Description	Quantity
201A	17L752	PLATE, mounting valve, no-z-axis	1
202A	17M276	BRACKET, cable track, no z	1
203A	127047	SCREW, mach, hex, flange, m6 x 1 x 10 mm	4
204A	107530	SCREW, cap, sch, hex	8
205A	105901	SCREW, mach, pnh	4
206A	17M823	BRACKET, connector mtg, z-axis	1
207A	17M831	COVER, cable bulkhead	1
209A	126496	CONNECTOR, thru, m12, mx, reverse key	2
210A	121612	CONNECTOR, thru, m12, mx	1
211A	128911	CONNECTOR, thru, m8, mx	1
212A	104176	BULKHEAD, 1/4 t x 1/4 t	1
213A	24X855	MODULE, gca, z-axis	1
214A	125609	FASTENER, screw, shcs, m3 x.5 x 10, ss	7
215A	17K768	HARNESS, wire, pwr, dt2, no theta	1
216A	17K128	HARNESS, e-stop, xyz, disp, mc1	1
217A	---	LABEL	1

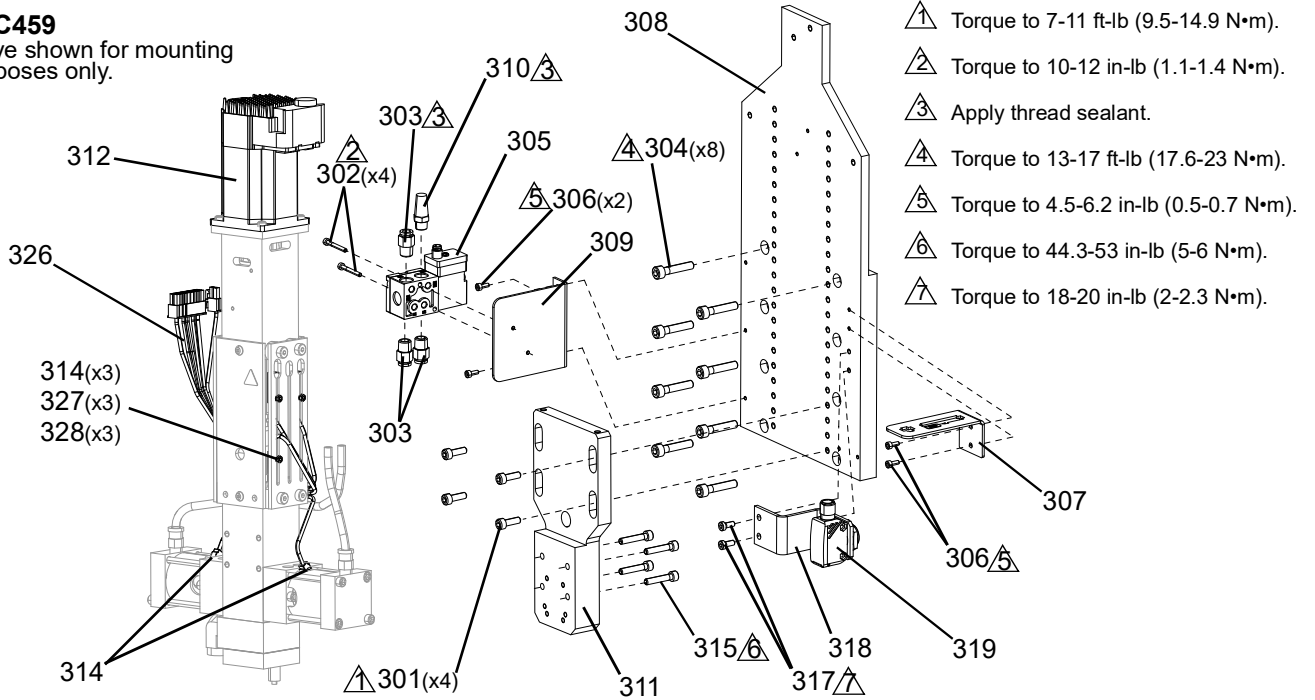
Not shown here. Refer to **Appendix A - Wiring Reference** on page 57.

Valve Holders

1093 Valve Holder, 25C459, and 1053 Valve Holder, 25C174

25C459

Valve shown for mounting purposes only.



25C174

Valve shown for mounting purposes only.

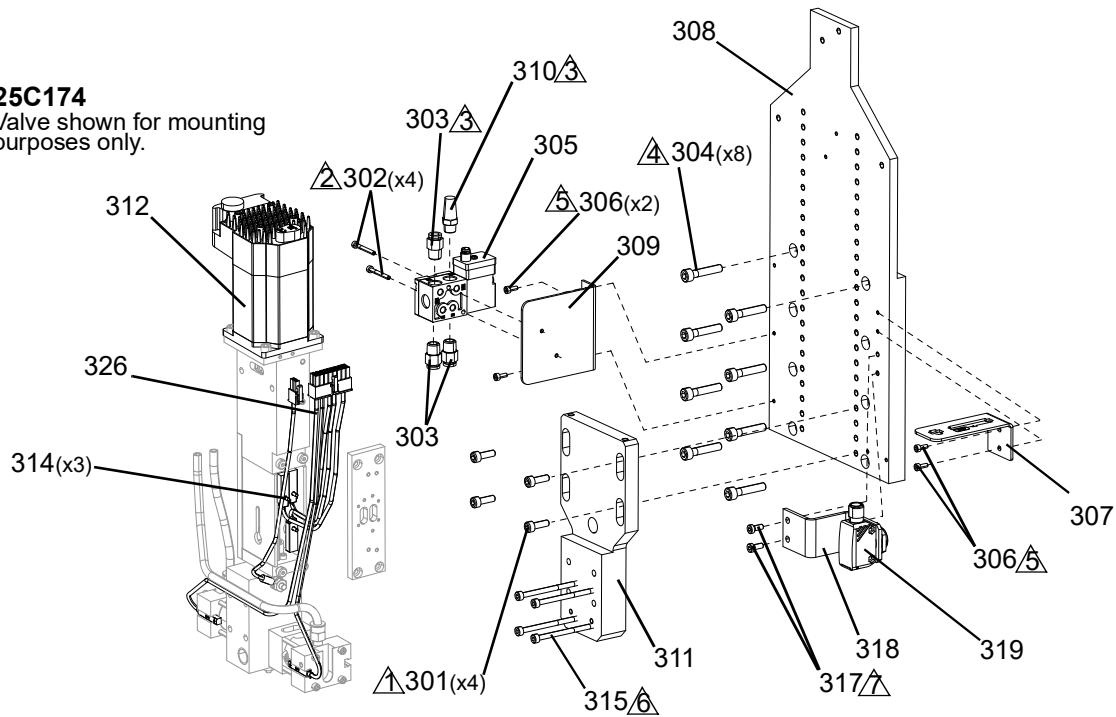


FIG. 13: 1093 Valve Holder and 1053 Valve Holder

1093 and 1053 Valve Holder Parts

Ref	Part	Description	25C459	25C174
301	117126	SCREW, shcs m5 x 16	4	4
302	117820	SCREW, cap, socket hd, m3	2	2
303	123371	FITTING, connector, 1/4 tub x 1/8 npt, b	3	3
304	124200	SCREW, shsc, m6-1.0 x 30, sst	8	8
305	128731	VALVE, direct solenoid	1	1
306	16G740	SCREW, shcs	4	4
307	17L016	BRACKET, disconnect, 1053	1	1
308	17L685	PLATE, mounting, 1053_automation	1	1
309	17L687	BRACKET, solenoid, 1053, automation	1	1
310	C06061	MUFFLER, sintered, dia 1/8	1	1
311	17L686	PLATE, adjust, mtg, 1053	1	1
312	25C544	KIT, motor, servo, z/theta axis	1	1
314	128275	SCREW, flat head, steel, m2.5 x 10	5	3
315	105210	SCREW, cap, socket hd	4	
	114100	SCREW, cap, socket hd		4
317	17L811	SCREW, shcs, m4 x 10, lp head	2	2
318	17M789	BRACKET, xz mute sensor	1	1
319	129365	SENSOR, retro, reflective	1	1
320	128415	RELAY, contactor, 24v dc, 4	1	1
321	123386	RELAY, 24v dc coil, spdt, 6a/240v	1	1
322	17E401	HARNESS, wire, cb4, mc2	1	1
323	17J748	HARNESS, wire, mr1, mc2, term	2	2
324	17J750	HARNESS, wire, mr1, mr2, term	2	2
325	17J756	HARNESS, wire, mr2, term	1	1
326	17E453	HARNESS, motion table, sensors, 1093	1	
	17L405	HARNESS, motion table, sensors, 1053		1
327	115059	WASHER, plain, flat, #3	3	
328	105338	NUT, mach, hex	3	

*Not shown here. Refer to **Appendix A - Wiring Reference** on page 57.*

PD44 Valve Holder, 25C175

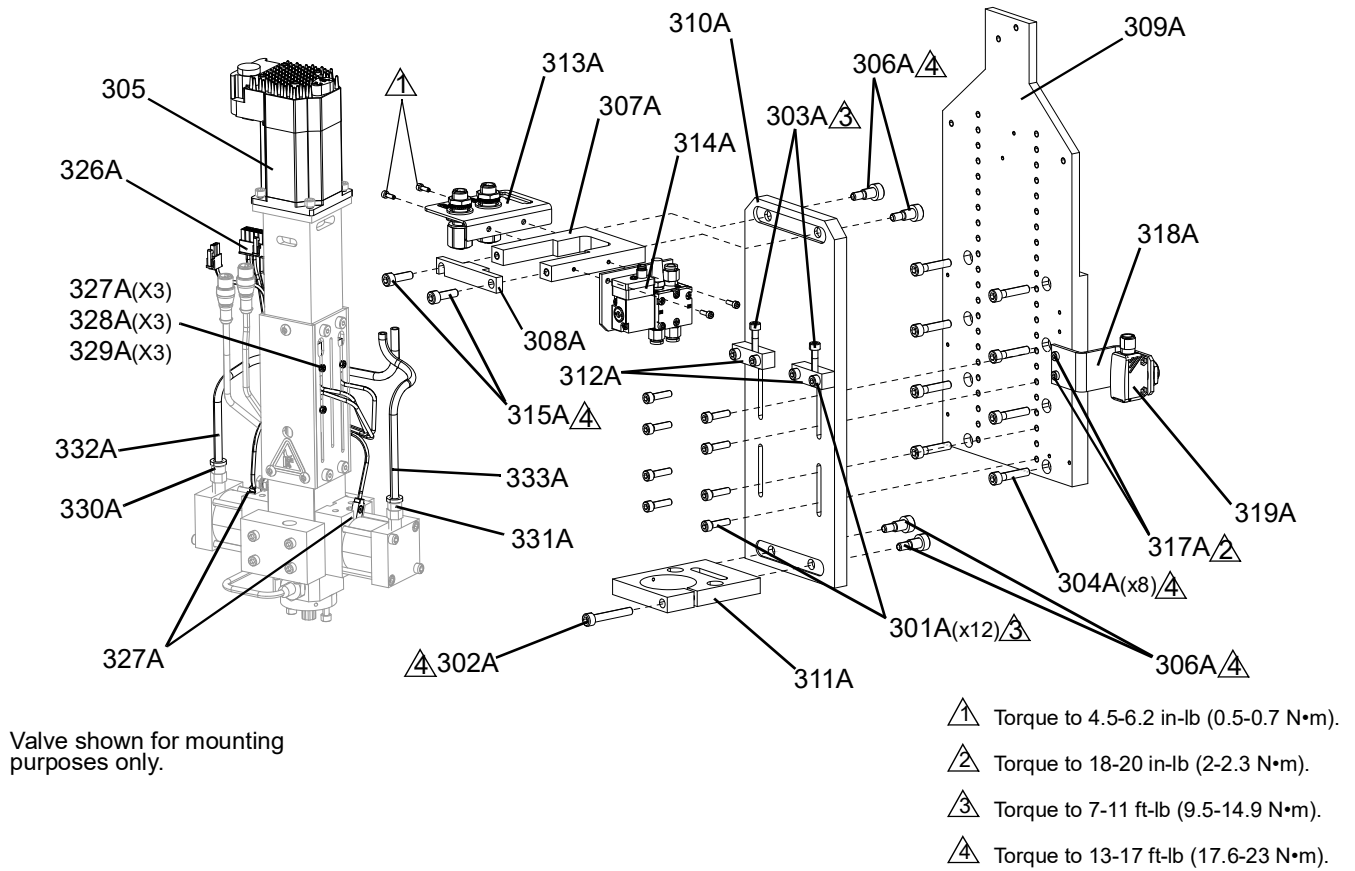


FIG. 14: PD44 Valve Holder

Ref	Part	Description	Quantity
301A	108787	SCREW, cap, sch	12
302A	117030	SCREW, shcs, m6 x 40	1
303A	121194	SCREW	2
304A	124200	SCREW, shsc, m6-1.0 x 30, sst	8
305A	25C544	KIT, motor, servo, z/theta axis	1
306A	128651	SCREW, shldr, 8 x 10, m6-1.0, patch,c	4
307A	17H506	PLATE, mtg, pd44, motor	1
308A	17J317	BLOCK, mtg, pd44, motor clamp	1
309A	17L685	PLATE, mounting, 1053_automation	1
310A	17L689	PLATE, mounting, pd44, automation	1
311A	17L690	BLOCK, lower, pd44, automation	1
312A	17L691	BLOCK, adjust, pd44, automation	2
313A	24Y508	CONNECTOR, disconnect, pd44	1
314A	25A124	VALVE, solenoid, pd44, xyz	1
315A	513035	SCREW, cap skt hd m6 x 20m	2
317A	17L811	SCREW, shcs, m4 x 10, lp head	2
318A	17M789	BRACKET, xz mute sensor	1

Parts

Ref	Part	Description	Quantity
319A	129365	SENSOR, retro, reflective	1
320A	128415	RELAY, contactor, 24v dc, 4	1
321A	123386	RELAY, 24v dc coil, spdt, 6a/240v	1
322A	17E401	HARNESS, wire, cb4, mc2	1
323A	17J748	HARNESS, wire, mr1, mc2, term	2
324A	17J750	HARNESS, wire, mr1, mr2, term	2
325A	17J756	HARNESS, wire, mr2, term	1
326A	17J500	HARNESS, motion table, sensors, pd44	1
327A	128275	SCREW, flat head, steel, m2.5 x 10	5
328A	115059	WASHER, plain, flat, #3	3
329A	105338	NUT, mach, hex	3
330A	123537	BUTTON, snap-on, 1/4 tube, green	1
331A	123538	BUTTON, snap-on, 1/4tube, yellow	1
332A	61/2904-GN/11	TUBE, 0.160 id x 0.250 od, pu, 95 dur	1
333A	61/2904-YL/11	TUBE, 0.160 id x 0.250 od, pu, 95 dur	1

*Not shown here. Refer to **Appendix A - Wiring Reference** on page 57.*

PC Pump Valve Holder, 25E453

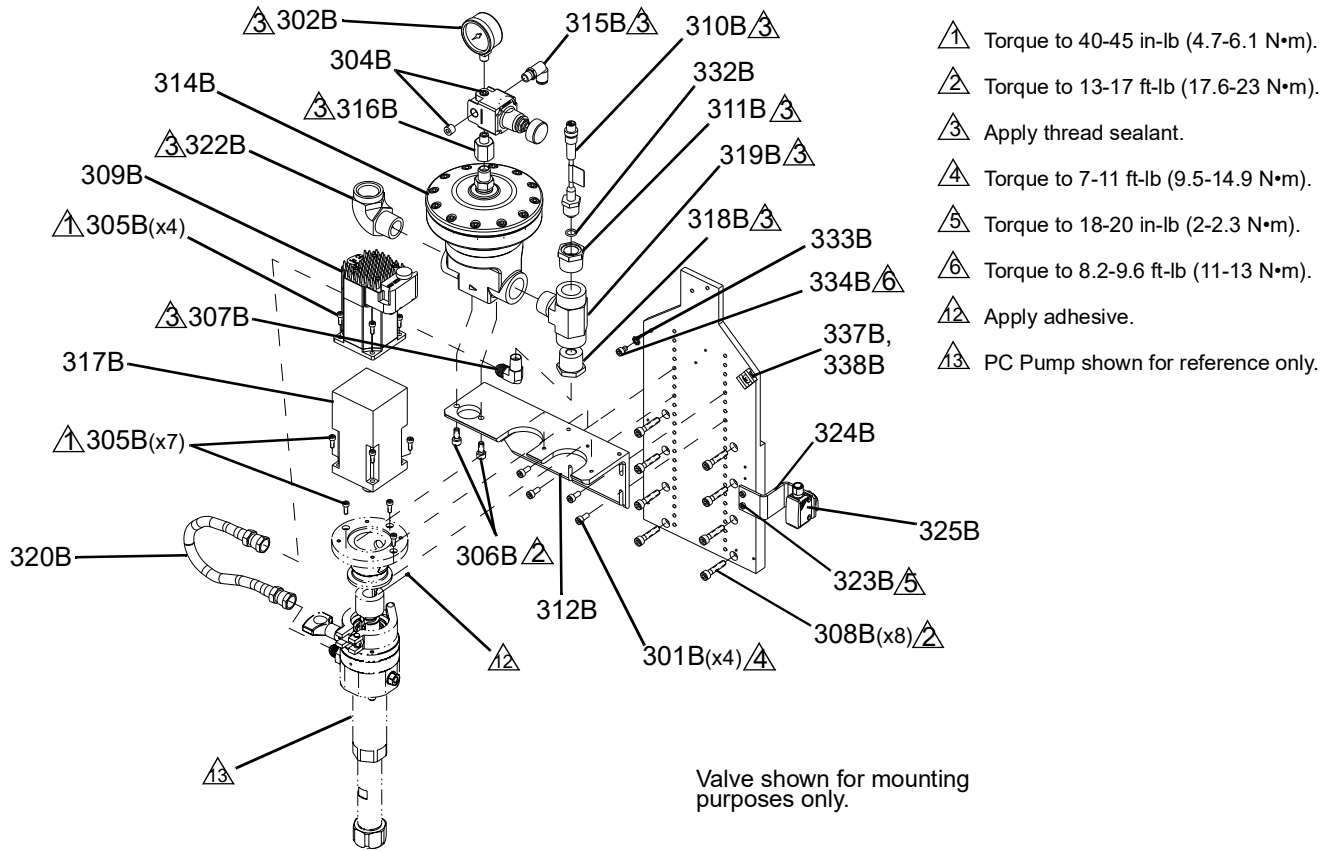


FIG. 15: PC Pump Valve Holder

Ref	Part	Description	Quantity
301B	107100	SCREW, cap, sch	4
302B	111598	GAUGE, pressure, air	1
304B	130492	REGULATOR, air, precision, 1/8npt	1
305B	116475	SCREW, shcs	11
306B	121518	SCREW, cap, shc	2
307B	122786	FITTING, jic06 x 1/4 npt, ss	1
308B	124200	SCREW, shsc, sst	8
309B	25C544	MOTOR, servo drive, x/y axis	1
310B	16P290	SENSOR, pressure, fluid outlet	1
311B	16U440	ADAPTER, fitting, pressure sensor	1
312B	17L683	BRACKET, mtg, adjust, pc pump	1
313B	17L685	PLATE, mounting	1
314B	234266	REGULATOR, pressure, npt	1
315B	597151	FITTING, elbow	1
316B	C20895	FITTING, bushing, 1/4 x 1/8	1
317B	U70875	GEAR REDUCER, 15:1	1
318B	516308	FITTING, bushing, reducer, sst	1

Parts

Ref	Part	Description	Quantity
319B	129111	FITTING, tee branch, male, 3/4, ss	1
320B	16C552	HOSE, assembly, ss brd, 3/8 x 12, ss	1
321B	070408	SEALANT, pipe, sst	1
322B	122327	FITTING, elbow, street	1
323B	17L811	SCREW, shcs, max10, lp head	2
324B	17M789	BRACKET, xz mute sensor	1
325B	129365	SENSOR, retro, reflective	1
326B	128415	RELAY, contactor, 24V dc	1
327B	123386	RELAY, 24vdc coil, spdt, 6A/240V	1
328B	17E401	HARNESS, wire, CB4, MC2	1
329B	17J748	HARNESS, wire, MR1, MC2, term	2
330B	17J750	HARNESS, wire, MR1, MR2, term	2
331B	17J756	HARNESS, wire, MR2, term	1
332B	111457	PACKING, o-ring	1
333B	96/0005-2/99	WASHER, lock	1
334B	121224	SCREW, shcs	1
335B	122960	ADHESIVE	1
336B	17P742	SOFTWARE, motor, z/dispense, 21ser	1
337B	123452	HOLDER, anchor, wire tie, nylon	1
338B	105901	SCREW, mach, pnh	1

*Not shown here. Refer to **Appendix A - Wiring Reference** on page 57.*

MD2 Valve Holder, 25C177

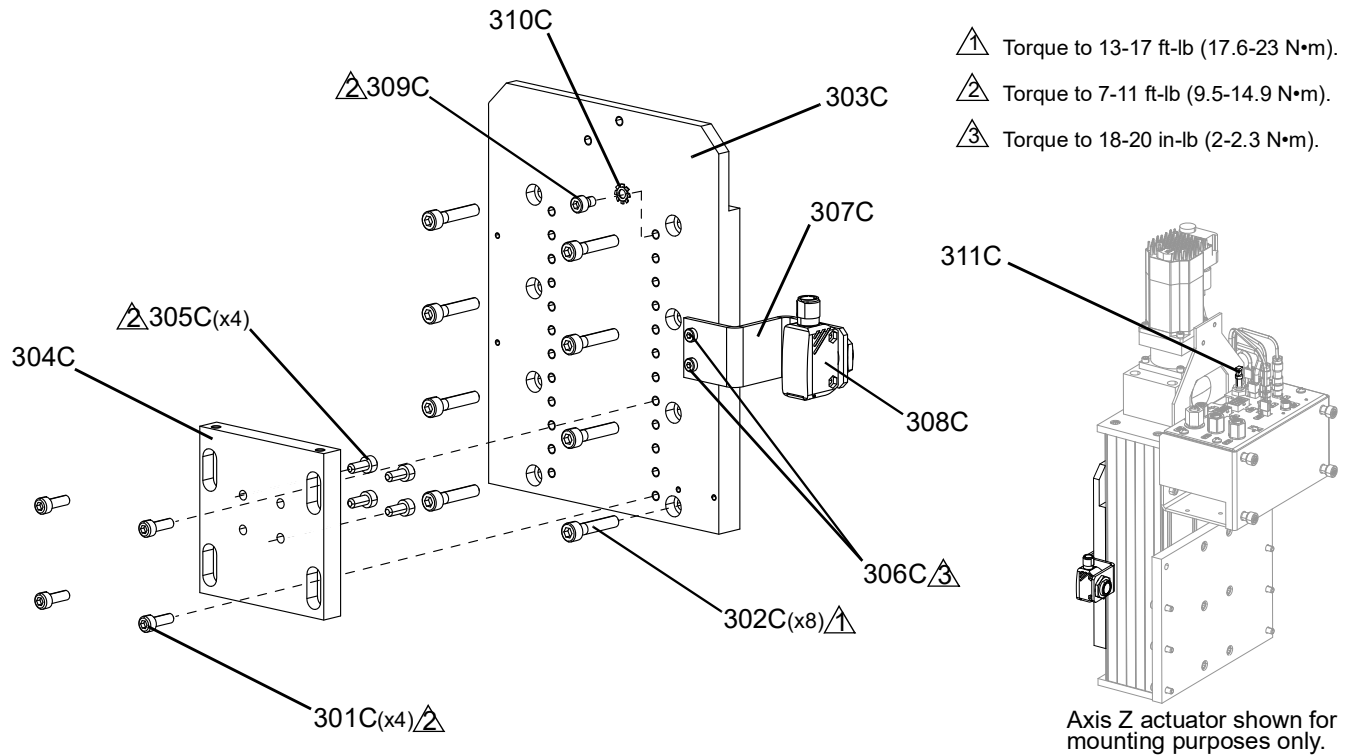


FIG. 16: MD2 Valve Holder

Ref	Part	Description	Quantity
301C	117126	SCREW, shcs, m5 x 16	4
302C	124200	SCREW, shsc, m6-1.0 x 30, sst	8
303C	17L693	PLATE, mounting, 1206-710s	1
304C	17L695	PLATE, mounting, no z, md2	1
305C	117026	SCREW, shcs, m5 x 12	4
306C	17L811	SCREW, shcs, m4 x 10, lp head	2
307C	17M789	BRACKET, xz mute sensor	1
308C	129365	SENSOR, retro, reflective	1
309C	121224	SCREW, shcs, m5-.8 x 8 mm	1
310C	96/0005-2/99	WASHER, lock, ext, #10, ms	1
311C	21604-01	PLUG, plug, tube, plastic, 1/4 in. dia.	1
312C	17K768	HARNESS, wire, pwr, dt2, no theta	1
313C	17K128	HARNESS, e-stop, xyz, disp, mc1	1

*Not shown here. Refer to **Appendix A - Wiring Reference** on page 57.*

Ambient Endure Valve Holder, 25C178

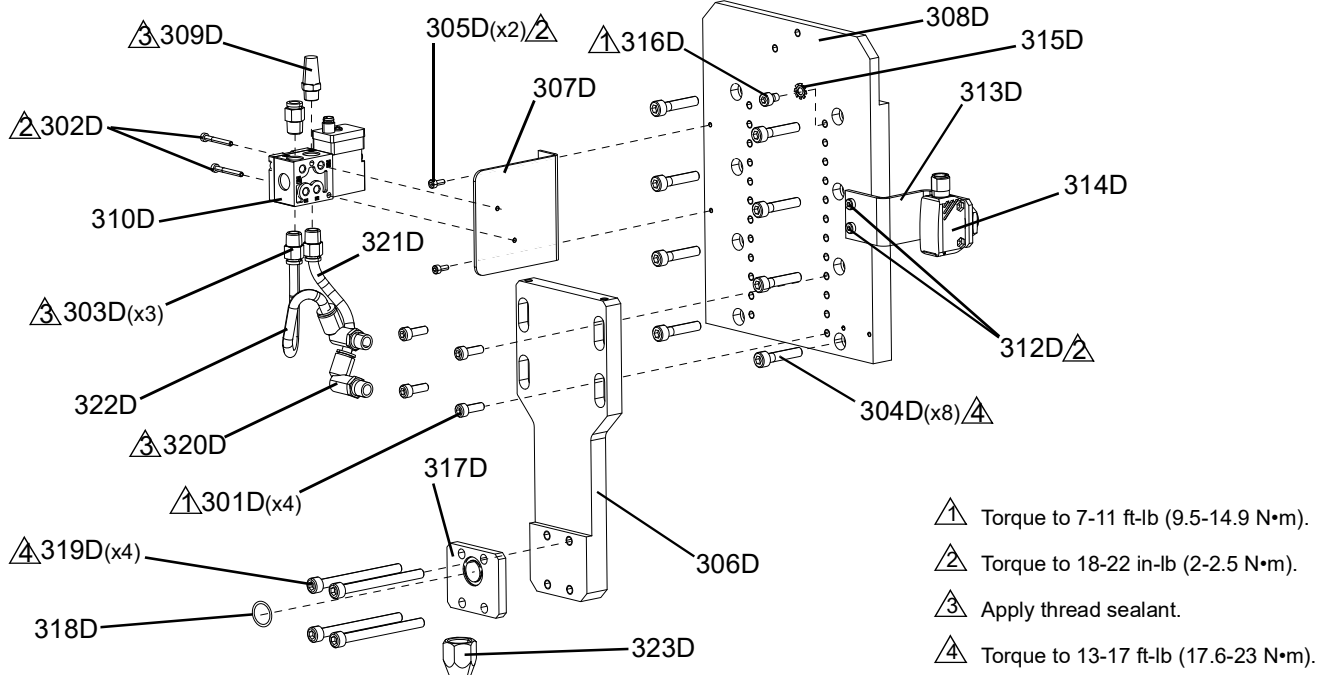


FIG. 17: Ambient Endure Valve Holder

Ref	Part	Description	Quantity
301D	117126	SCREW, shcs, m5 x 16	4
302D	117820	SCREW, cap, socket hd, m3	2
303D	123371	FITTING, connector, 1/4 tub x 1/8 npt, b	3
304D	124200	SCREW, shsc, m6-1.0 x 30, sst	8
305D	16G740	SCREW, shcs	2
306D	17L682	PLATE, adjust, mtg, endure	1
307D	17L687	BRACKET, solenoid, 1053, automation	1
308D	17L693	PLATE, mounting, 1206-710s	1
309D	C06061	MUFFLER, sintered, dia 1/8	1
310D	128731	VALVE, direct solenoid	1
312D	17L811	SCREW, shcs, m4 x 10, lp head	2
313D	17M789	BRACKET, xz mute sensor	1
314D	129365	SENSOR, retro, reflective	1
315D	96/0005-2/99	WASHER, lock, ext, #10, ms	1
316D	121224	SCREW, shcs, m5-.8 x 8 mm	1
317D	17L751	BLOCK, mounting, endure	1
318D	109576	PACKING, o-ring	1
319D	117083	SCREW, shcs, m6 x 70	4
320D	597151	FITTING, elbow	2
321D	61/2904-GN/11	TUBE, 0.160 id x 0.250 od, pu,95 dur,	1
322D	61/2904-YL/11	TUBE, 0.160 id x 0.250 od, pu, 95dur,	1
323D	C32089	RETAINER, seat	1

Ref	Part	Description	Quantity
324D	17K768	HARNESS, wire, pwr, dt2, no theta	1
325D	17K128	HARNESS, e-stop, xyz, disp, mc1	1

*Not shown here. Refer to **Appendix A - Wiring Reference** on page 57.*

710/Jetting Valve Holder 25C179

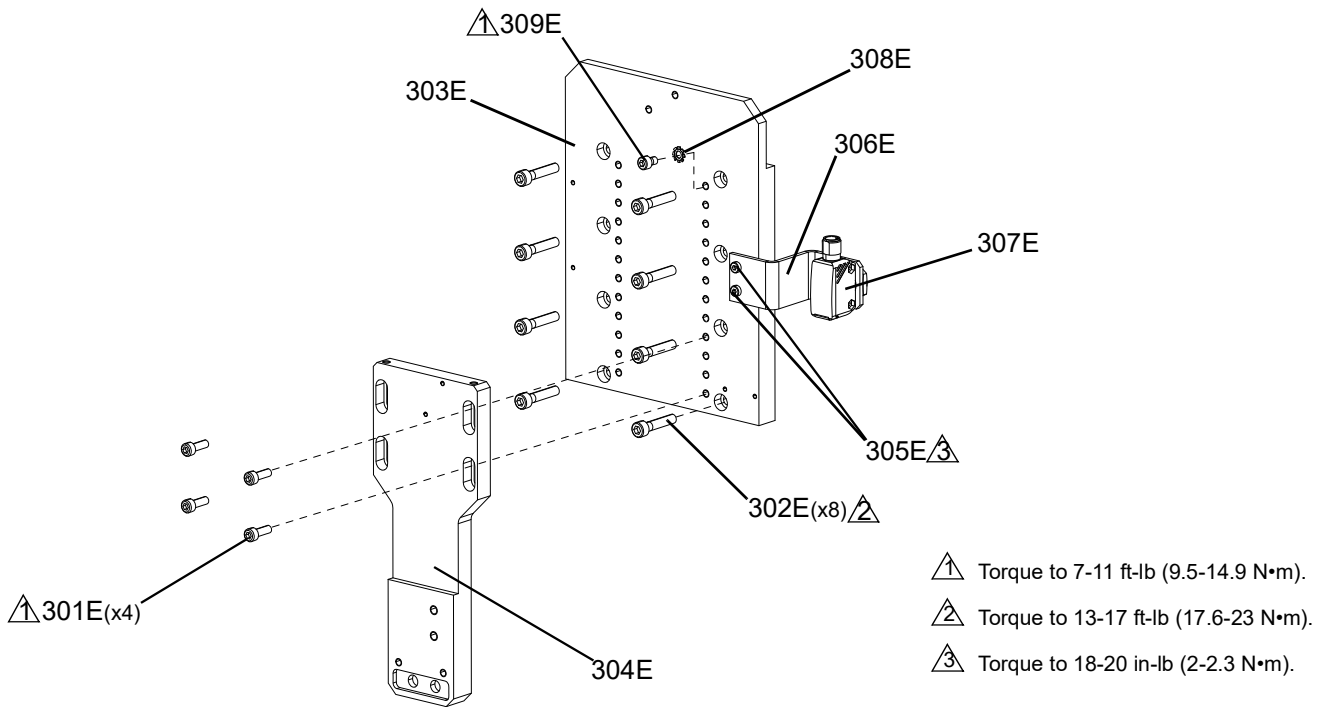


FIG. 18: 710/Jetting Valve Holder

Ref	Part	Description	Quantity
301E	117126	SCREW, shcs, m5 x 16	4
302E	124200	SCREW, shsc, m6-1.0 x 30, sst	8
303E	17L693	PLATE, mounting, 1206-710s	1
304E	17L694	PLATE, adjust, mtg, 1206-710s	1
305E	17L811	SCREW, shcs, m4 x 10, lp head	2
306E	17M789	BRACKET, xz mute sensor	1
307E	129365	SENSOR, retro, reflective	1
308E	96/0005-2/99	WASHER, lock, ext, #10, ms	1
309E	121224	SCREW, shcs, m5-.8 x 8 mm	1
310E	17K768	HARNESS, wire, pwr, dt2, no theta	1
311E	17K128	HARNESS, e-stop, xyz, disp, mc1	1

Not shown here. Refer to **Appendix A - Wiring Reference** on page 57.

1206 Valve Holder, 25C180

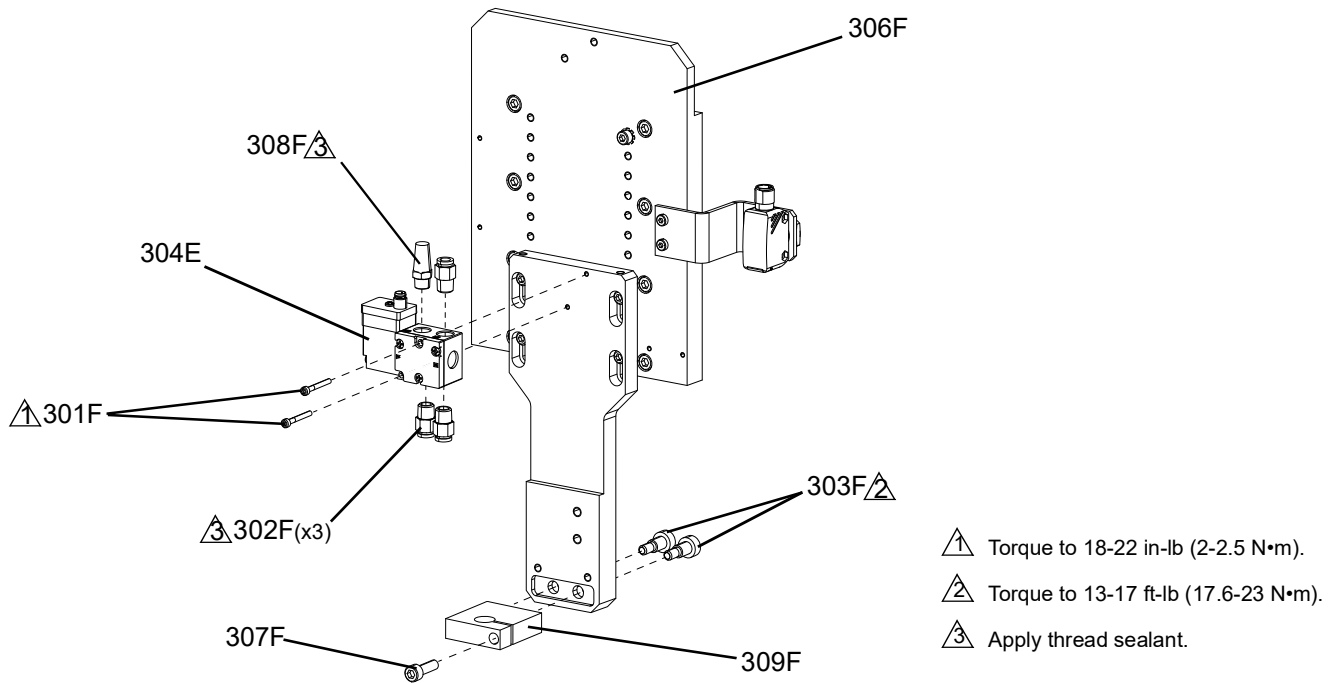


FIG. 19: 1206 Valve Holder

Ref	Part	Description	Quantity
301F	117820	SCREW, cap, socket hd, m3	2
302F	123371	FITTING, connector, 1/4 tub x 1/8 npt, b	3
303F	128651	SCREW, shldr, 8 x 10, m6-1.0, patch, c	2
304E	128731	VALVE, direct solenoid	1
306F	25C179	HOLDER, valve, 710/jet	1
307F	513035	SCREW, cap skt hd m6 x 20 m	1
308F	C06061	MUFFLER, sintered, dia 1/8	1
309F	17L692	BLOCK, lower, 1206, automation	1

C-300 Guard Assembly, 25C007, 25C008, 25C009

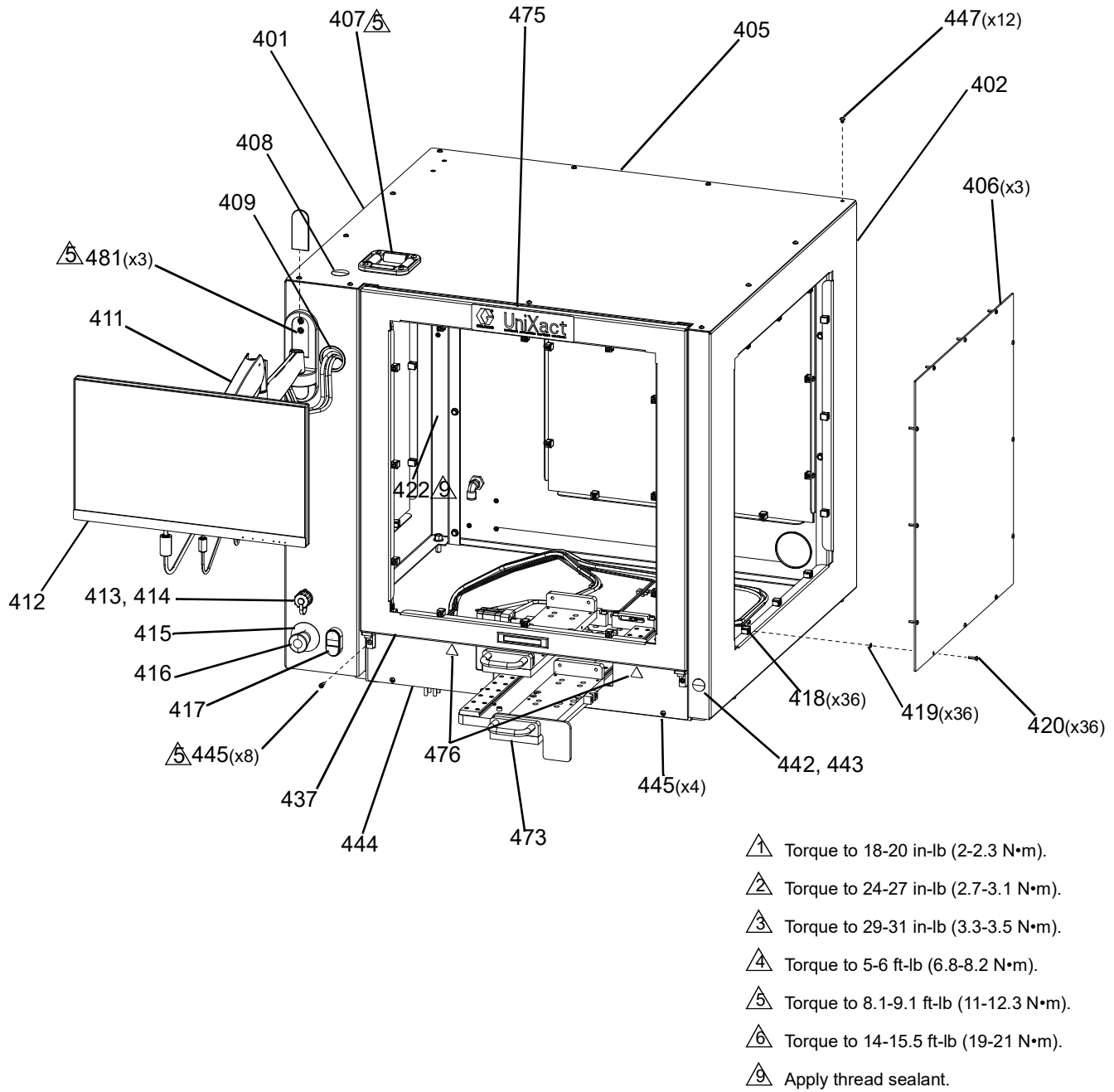


FIG. 20: C-300 Guard Assembly 25C009

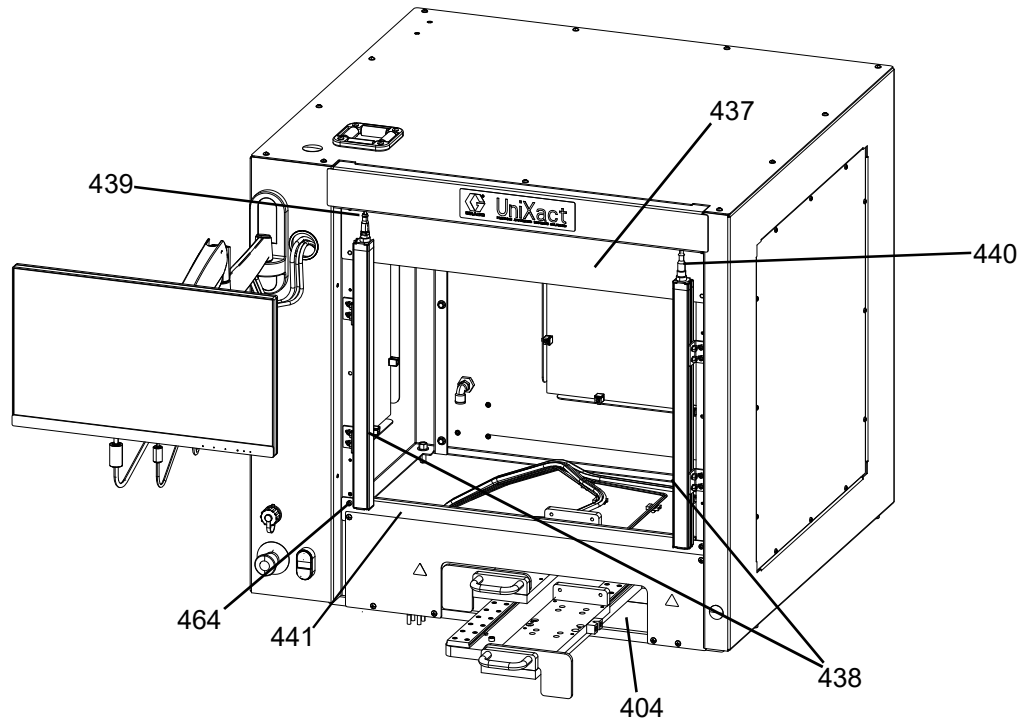


FIG. 21: C-300 Guard Assembly 25C008

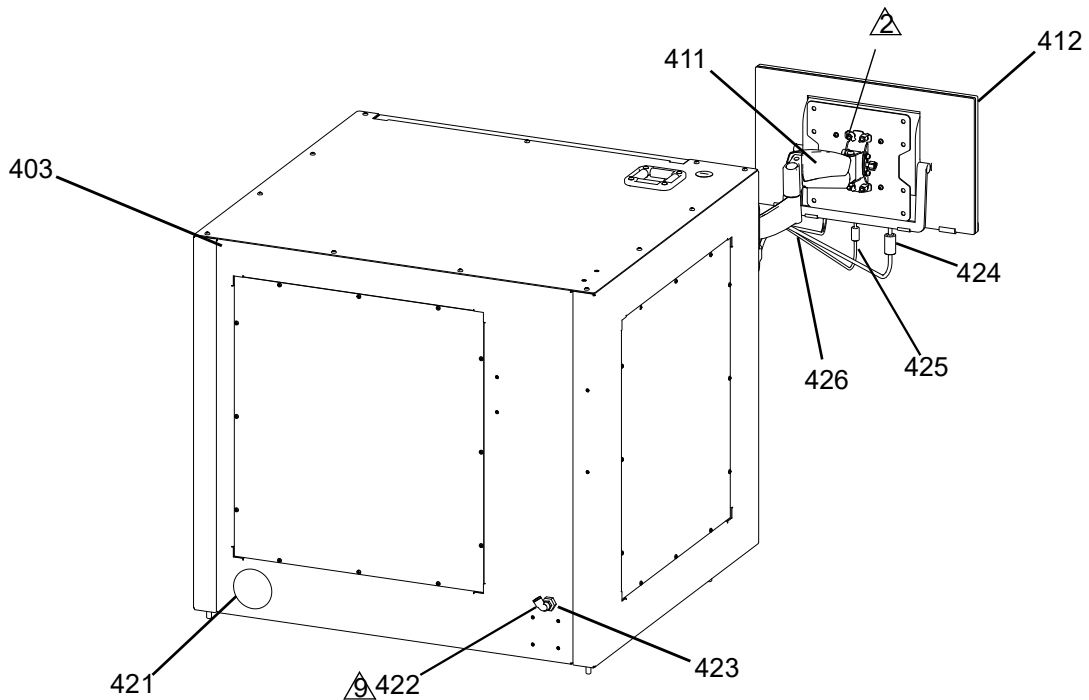


FIG. 22: C-300 Guard Assembly Rear View

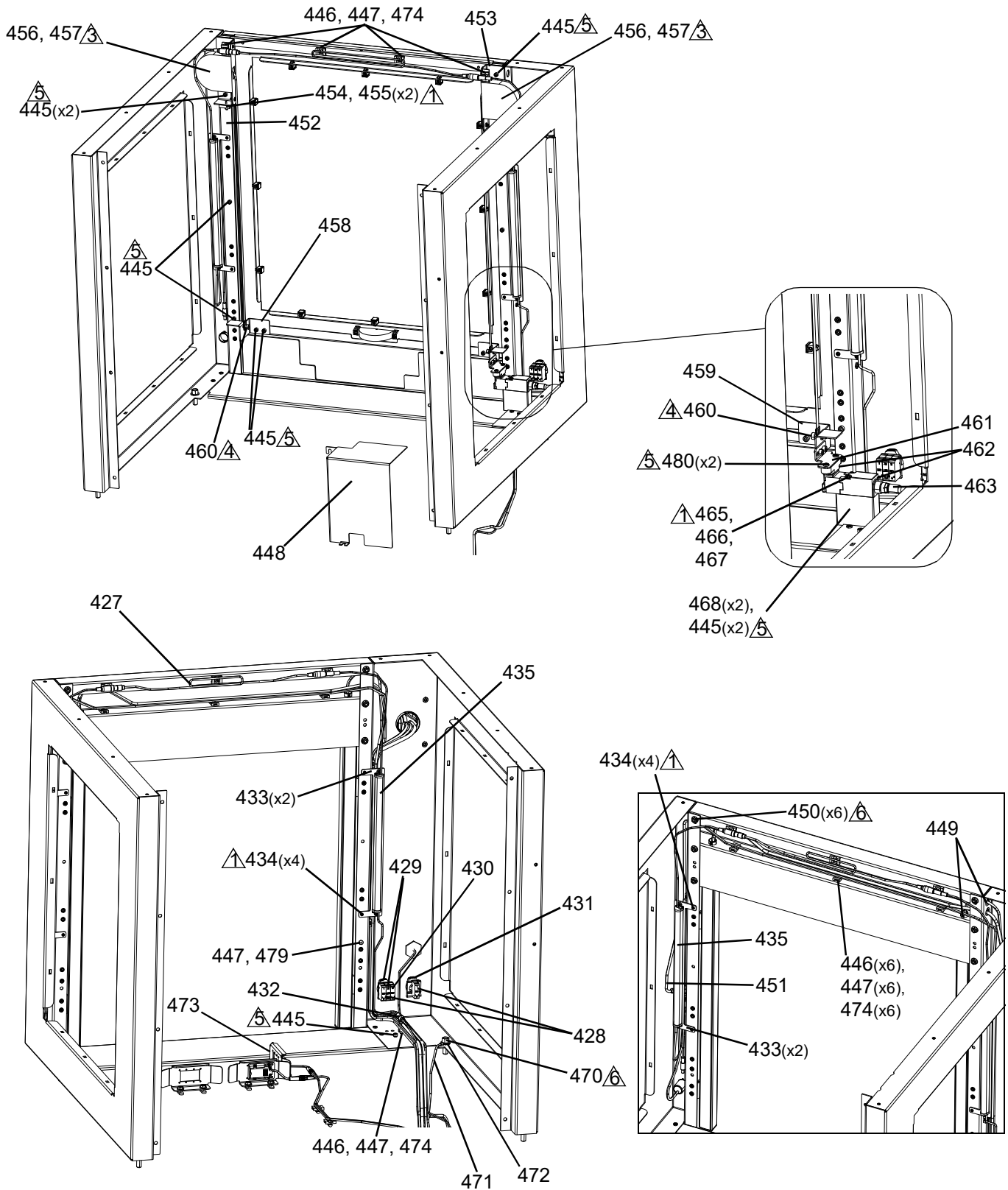


FIG. 23: C-300 Guard Assembly Interior Views

C-300 Guard Assembly Parts

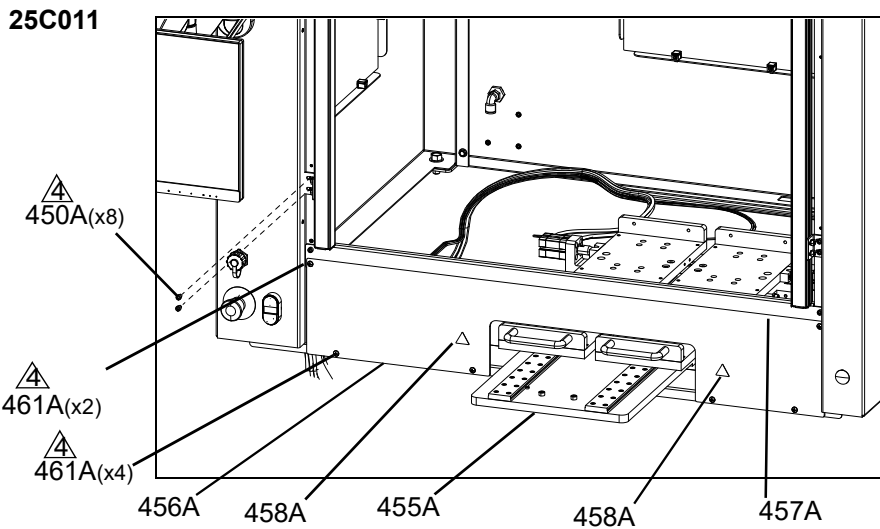
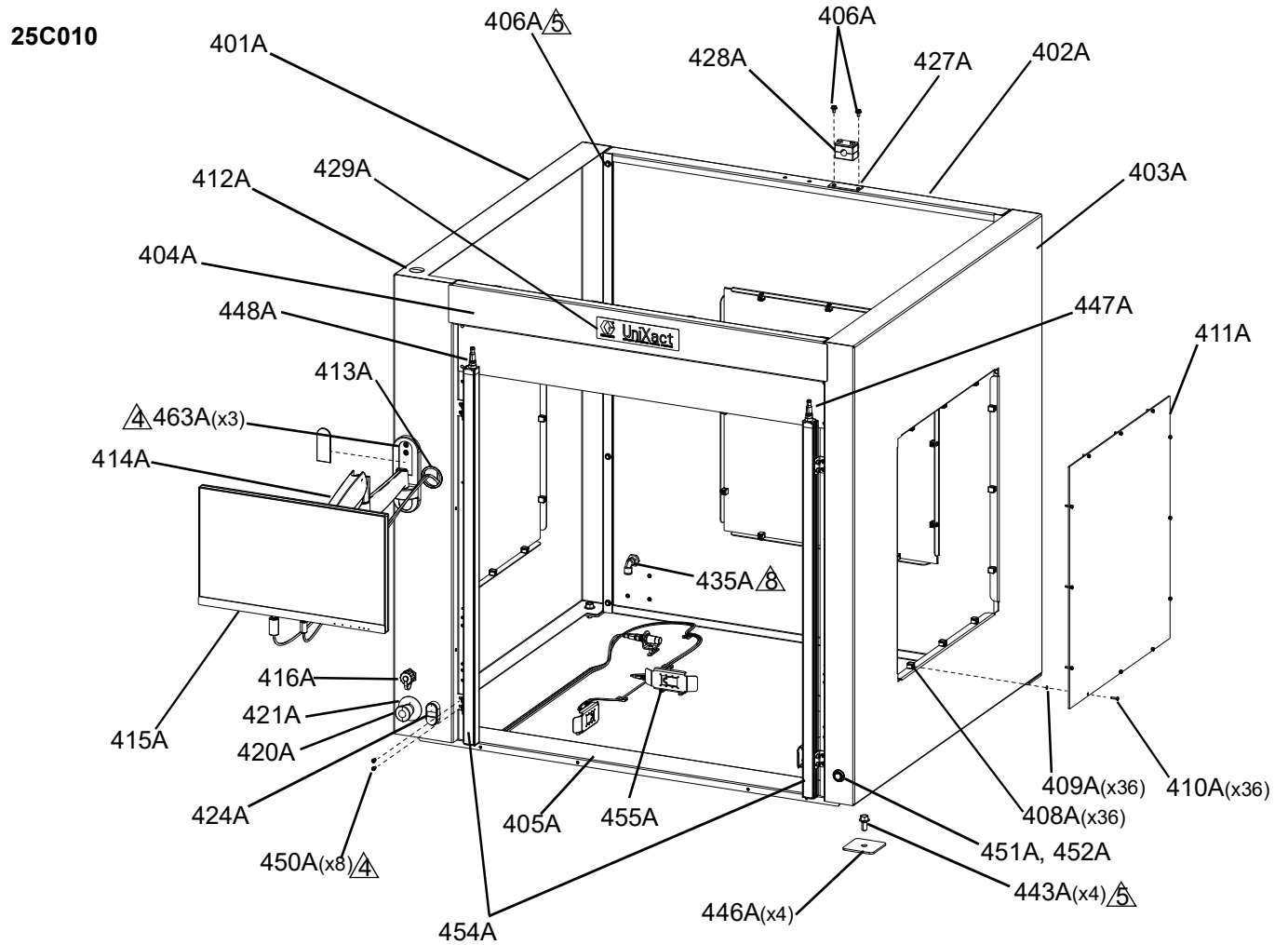
Ref	Part	Description	25C007	25C008	25C009
401	17E322	PANEL, side, left, guard, xyz	1	1	1
402	17E323	PANEL, side, right, guard, xyz	1	1	1
403	17E324	PANEL, rear, guard, xyz	1	1	1
404	17E326	GUARD, front, lower, xyz	1	1	1
405	17E327	PANEL, top, guard, xyz	1	1	1
406	17E345	PANEL, window, guard, xyz	3	3	3
407	24N897	KIT, repair, roller bracket	1	1	1
408	128213	PLUG, hole, 1.250 in.	1	1	1
409	124128	BUSHING, wire protector, snap-in	1	1	1
410	127047	SCREW, mach, hex, flange, m6 x 1 x 10 mm	8	8	8
411	133194	ARM, swivel, mount, monitor	1	1	1
412	25E353	KIT, touchscreen, color, 22 in.	1	1	1
413	15R325	COVER, dust, bulkhead receptacle	1	1	1
414	17E309	HARNESS, usb, plug/bulkhead, ferrite	1	1	1
415	81/2060-EL/11	LABEL, legend, e-stop, 60 mm	1	1	1
416	81/2060-E/11	BUTTON, mush, maint, twist, red	1	1	1
417	81/2060-P/11	BUTTON, dual, grn/red, w/pl-wht	1	1	1
418	129151	BLOCK, mtg, panel, 5 pa	36	36	36
419	129152	WASHER, flat, #8, m4, self-retaining	36	36	36
420	195875	SCREW, mach, phil pan hd	36	36	36
421	129150	PLUG, panel 3 in.	1	1	1
422	121141	FITTING, elbow, swivel, 3/8 t 1/4 mnpt	2	2	2
423	123390	FITTING, fitting, 1/4 npt, brs	1	1	1
424	128799	HARNESS, vga, hd 15, mm, 10 ft, blk	1	1	1
425	128800	HARNESS, usb2. 0, axb, male, 10 ft, blk	1	1	1
426	17E369	HARNESS, pwr, 18 awg, iec, c13, locking	1	1	1
427	128715	CABLE, assy, dc plug, mf, 3 ft, 18 awg	1	1	1
428	81/2081-1/11	CONTACT, block, nc	2	2	2
429	81/2072-2/11	LIGHT, led, white, 24 vdc, latch	1	1	1
430	81/2080-1/11	CONTACT, block, no	1	1	1
431	81/2070/11	LATCH, operator	1	1	1
432	17E371	HARNESS, dc plug, m, 5.5 x 2.1 mm	1	1	1
433	17E341	BRACKET, mtg, light	2	2	2
434	119912	SCREW, mach, phil pan	8	8	8
435	128713	LIGHT, led, 24 vdc, 4 w, 12 in., daisy	2	2	2
437	17E325	BRACKET, front, upper, guard, xyz	1	1	
	25C006	DOOR, assy, xyz			1
438	17E343	SENSOR, curtain, light, 663 mm	1		
	17E344	SENSOR, curtain, light, 513 mm		1	
439	17K067	CABLE, m12, 5 pin, lc1 trans	1	1	
440	17K066	CABLE, m12, 8 pin, lc1 rec	1	1	
441	17E328	COVER, front, lower, guard, xyz		1	

Parts

Ref	Part	Description	25C007	25C008	25C009
442	17K060	SENSOR, touch, green	1		
	123812	PLUG, hole, .875 in.		1	1
443	17K064	DIFFUSER, disc	1		
444	17E330	GUARD, front, lower, clear, xyz, c3		1	
	17E342	GUARD, front, lower, clear, c3			1
445	121224	SCREW, shcs, m5-.8 x 8 mm	9	11	19
446	123452	HOLDER, anchor, wire tie, nylon	11	9	7
447	105901	SCREW, mach, pnh	27	25	24
448	17E329	COVER, elec, front, xyz	1	1	
	17E340	COVER, elec, front, ds, xyz			1
449	129158	BUSHING, wire protector, .625, split	5	5	
450	15U698	NUT, hex, flange, serrated	6	6	
451	17E394	HARNESS, motion table, cycle start	1		
452	17E336	BRACKET, mtg, balance, door, rt			1
453	17E335	BRACKET, mtg, balance, door, lt			1
454	128699	MAGNET, channel, 1.0 x .88 x .25, 7 lb			2
455	297331	SCREW, cap, skthd, 4 x 1/4			2
456	128694	SPRING, counterbalance, side, 7 lbs			2
457	127344	SCREW, fhscs, m4 x .7-10 g, 316 ss			4
458	17E338	BRACKET, mtg, tape, door, rt			1
459	17E337	BRACKET, mtg, tape, door, lt			1
460	124314	SCREW, shoulder, 6 x 8, m5-.8, cs			2
461	17E339	BRACKET, mtg, latch, safety			1
462	128346	SENSOR, door			1
463	17E395	HARNESS, motion table, door sw1			1
464	106084	SCREW, mach, PNH		6	4
465	108018	SCREW, mach, fill hd			2
466	122373	WASHER, flat, m3, din, 125			2
467	C19208	WASHER, lock			2
468	17E333	BLOCK, mtg, switch, door			1
470	127048	SCREW, mach, hex, flange, m10 x 1.5 x 2	4	4	4
471	17H241	WIRE, ground, 10-12 awg, 10 mm stud	1	1	1
472	100322	WASHER, lock	1	1	1
473	25C205	MODULE, sensor, tray, motion table	1		
	25C194	SLIDE, y manual, c300		1	1
474	114958	STRAP, tie	15	13	11
475	17E415	LABEL, unixact	1	1	1
476	15H108	LABEL, safety, warning, pinch		1	1
479	---	WASHER, plain	1	1	1
480	115266	SCREW, cap, socket head			2
481	117026	SCREW, SHCS, M5 x 12	3	3	3

Replacement Danger and Warning labels, tags, and cards are available at no cost.

C-500 Guard Assembly, 25C010, 25C011









-  Torque to 18-20 in-lb (2-2.3 N•m).
-  Torque to 24-27 in-lb (2.7-3.1 N•m).
-  Torque to 29-31 in-lb (3.3-3.5 N•m).
-  Torque to 8.1-9.1 ft-lb (11-12.3 N•m).
-  Torque to 14-15.5 ft-lb (19-21 N•m).
-  Apply thread sealant.

FIG. 24: C-500 Guard Assemblies

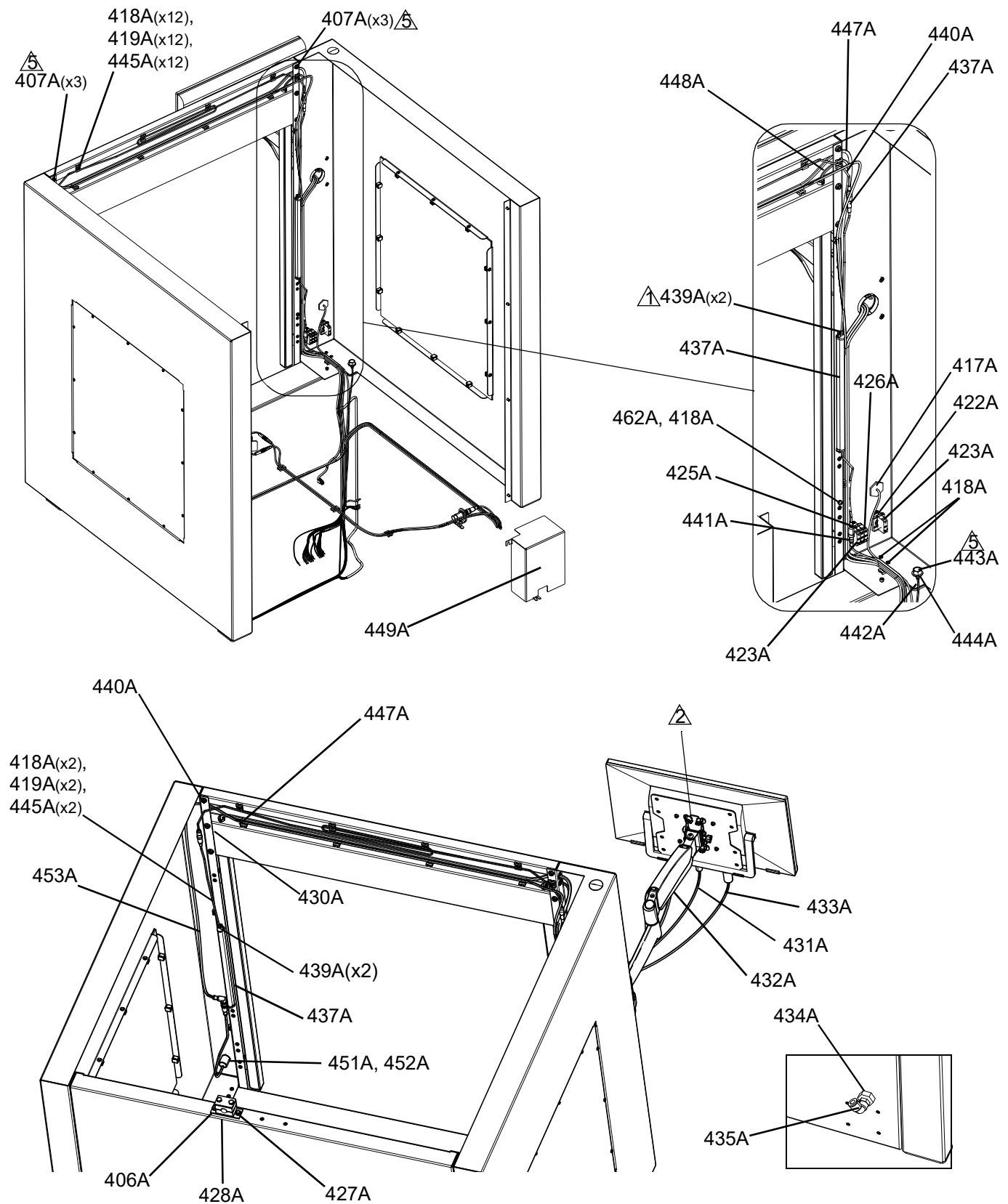


FIG. 25: C-500 Guard Assembly Rear and Interior Views

C-500 Guard Assembly Parts

Ref	Part	Description	25C010	25C011
401A	17E360	PANEL, side, left, guard, xyz	1	1
402A	17E361	PANEL, side, right, guard, xyz	1	1
403A	17E362	PANEL, rear, guard, xyz	1	1
404A	17E363	BRACKET, front, upper, guard, xyz	1	1
405A	17E364	GUARD, front, lower, xyz	1	1
406A	127047	SCREW, mach, hex, flange, m6 x 1 x 10 mm	10	10
407A	15U698	NUT, hex, flange, serrated	6	6
408A	129151	BLOCK, mtg, panel, 5 pa	36	36
409A	129152	WASHER, flat, #8, m4, self-retaining	36	36
410A	195875	SCREW, mach, phil pan hd	36	36
411A	17E345	PANEL, window, guard, xyz	3	3
412A	128213	PLUG, hole, 1.250 in.	1	1
413A	124128	BUSHING, wire protector, snap-in	1	1
414A	133194	ARM, swivel, mount, monitor	1	1
415A	25E353	KIT, touchscreen, color, 22 in.	1	1
416A	15R325	COVER, dust, bulkhead receptacle	1	1
417A	17E310	HARNESS, usb, plug/bulkhead, ferrite	1	1
418A	105901	SCREW, mach, pnh	20	20
419A	123452	HOLDER, anchor, wire tie, nylon	15	15
420A	81/2060-E/11	BUTTON, mush, maint, twist, red	1	1
421A	81/2060-EL/11	LABEL, legend, e-stop, 60 mm	1	1
422A	81/2070/11	LATCH, operator	1	1
423A	81/2081-1/11	CONTACT, block, nc	2	2
424A	81/2060-P/11	BUTTON, dual, grn/red, w/pl-wht	1	1
425A	81/2072-2/11	LIGHT, led, white, 24 vdc, latch	1	1
426A	81/2080-1/11	CONTACT, block, no	1	1
427A	61/0200-8MP/11	BRACKET, support, hose, 1/2 in. to 1	1	1
428A	132026	SUPPORT, hose, 5/8 in.	1	1
429A	17E415	LABEL, unixact	1	1
430A	129158	BUSHING, wire protector, .625, split	5	5
431A	17E369	HARNESS, pwr, 18 awg, iec, c13, locking	1	1
432A	128800	HARNESS, usb2.0, axb, male, 10ft, blk	1	1
433A	128799	HARNESS, vga, hd15, mm, 10 ft, blk	1	1
434A	123390	FITTING, fitting, 1/4 npt, brs	1	1
435A	121141	FITTING, elbow, swivel, 3/8 t 1/4 mnpt	2	2
437A	128713	LIGHT, led, 24 vdc, 4w, 12 in., daisy	2	2
439A	119912	SCREW, mach, phil pan	4	4
440A	129177	CABLE, assy, dc plug, 6ft, 18 awg	1	1
441A	17E371	HARNESS, dc plug, m, 5.5 x 2.1 mm	1	1
442A	17E396	HARNESS, wire, gnd, 12 mm stud	1	1
443A	129216	SCREW, cap, flange, m12-1.75 x 25, cs	4	4
444A	116287	WASHER, sst, external, starwasher	1	1

Parts

Ref	Part	Description	25C010	25C011
445A	114958	STRAP, tie	15	15
446A	17E367	PLATE, mtg, spacer	4	4
447A	17K066	CABLE, m12, 8 pin, lc1 rec	1	1
448A	17K067	CABLE, m12, 5 pin, lc1 trans	1	1
449A	17E365	COVER, elec, front, xyz	1	1
450A	121224	SCREW, shcs, m5-.8 x 8 mm	9	11
451A	17K060	SENSOR, touch, green	1	
	123812	PLUG, hole, .875 in.		1
452A	17K064	DIFFUSER, disc	1	
453A	17E394	HARNESS, motion table, cycle start	1	
454A	17K065	SENSOR, curtain, light	1	
	17K492	SENSOR, curtain, light		1
455A	25C205	MODULE, sensor, tray, motion, table	1	
	25C195	SLIDE, y, manual, c500		1
456A	17E368	GUARD, front, lower, clear, xyz, c5		1
457A	17E366	COVER, front, lower, guard, xyz		1
458A	15H108	LABEL, safety, warning, pinch		2
461A	106084	SCREW, mach, PNH		6
462A	112766	WASHER, plain	1	1
463A	117026	SCREW, SHCS, M5 x 12	3	3

Replacement Danger and Warning labels, tags, and cards are available at no cost.

Needle Find Sensor, 25C271

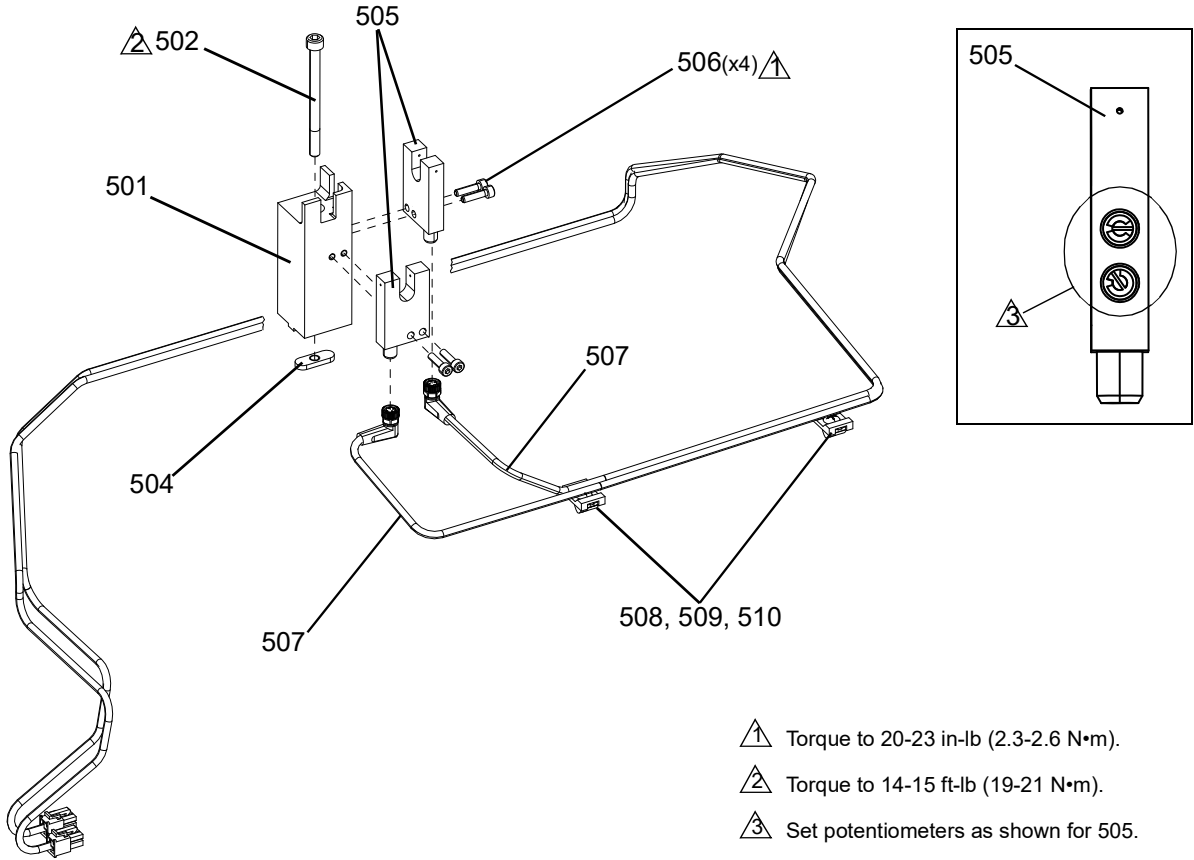


FIG. 26: Needle Find Sensor

Ref	Part	Description	Quantity
501	17H633	BLOCK, mtg, sensor, pry, xyz	1
502	129455	SCREW, shcs, m6-1.0 x 75, cs, zinc	1
504	17K042	NUT, tee, m6	1
505	128721	SENSOR, needle	2
506	16K078	SCREW, cap, socket head	4
507	17K458	HARNESS, motion table, needle	2
508	123452	HOLDER, anchor, wire tie, nylon	2
509	105901	SCREW, mach, pnh	2
510	128319	NUT, t, m5	2
511	114958*	STRAP, tie	2

* Not shown.

NOTE: Refer to **Appendix B - Wiring Schematics** on page **58** for wiring connection information.

Blow Off Needle Module, 25C272

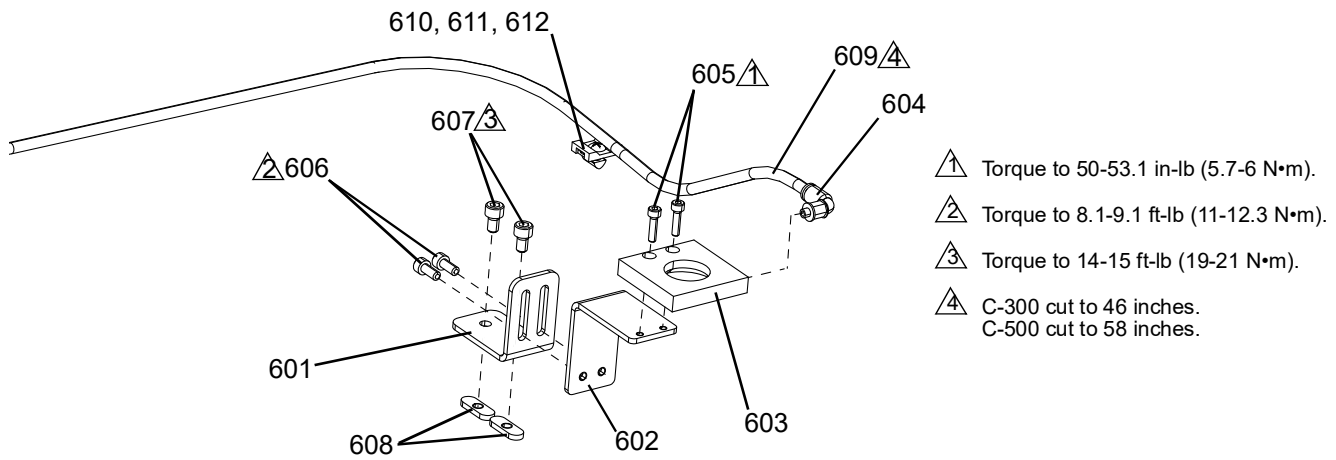


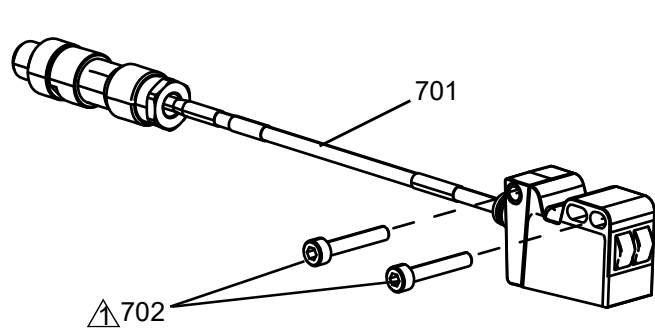
FIG. 27: Blow Off Needle Module

Ref	Part	Description	Quantity
601	17G462	BRACKET, base, mount needle	1
602	17G463	BRACKET, adjust, mount needle	1
603	24X863	BLOCK, blow off	1
604	124892	FITTING, elbow, swiv, 1/4 tubex10-32m	1
605	16K078	SCREW, cap, socket head	2
606	107100	SCREW, cap, sch	2
607	116899	SCREW, shcs ss	2
608	17K042	NUT, tee, m6	2
609	054130	TUBE, plyeth .250 od	5
610	123452	HOLDER, anchor, wire tie, nylon	1
611	105901	SCREW, mach, pnh	1
612	128319	NUT, t, m5	1
613	114958*	STRAP, tie	1

* Not shown.

NOTE: Refer to **Appendix B - Wiring Schematics** on page **58** for wiring connection information.

Part In Place Sensor, 25C313




 Torque to 4.5-6.2 in-lb (.5-.7 N•m).

FIG. 28: Part In Place Sensor

Ref	Part	Description	Quantity
701	17K460	HARNESS, motion table, part in place	1
702	1204543	SCREW, shcs, m3 x 18	2

Level Sensor Connections

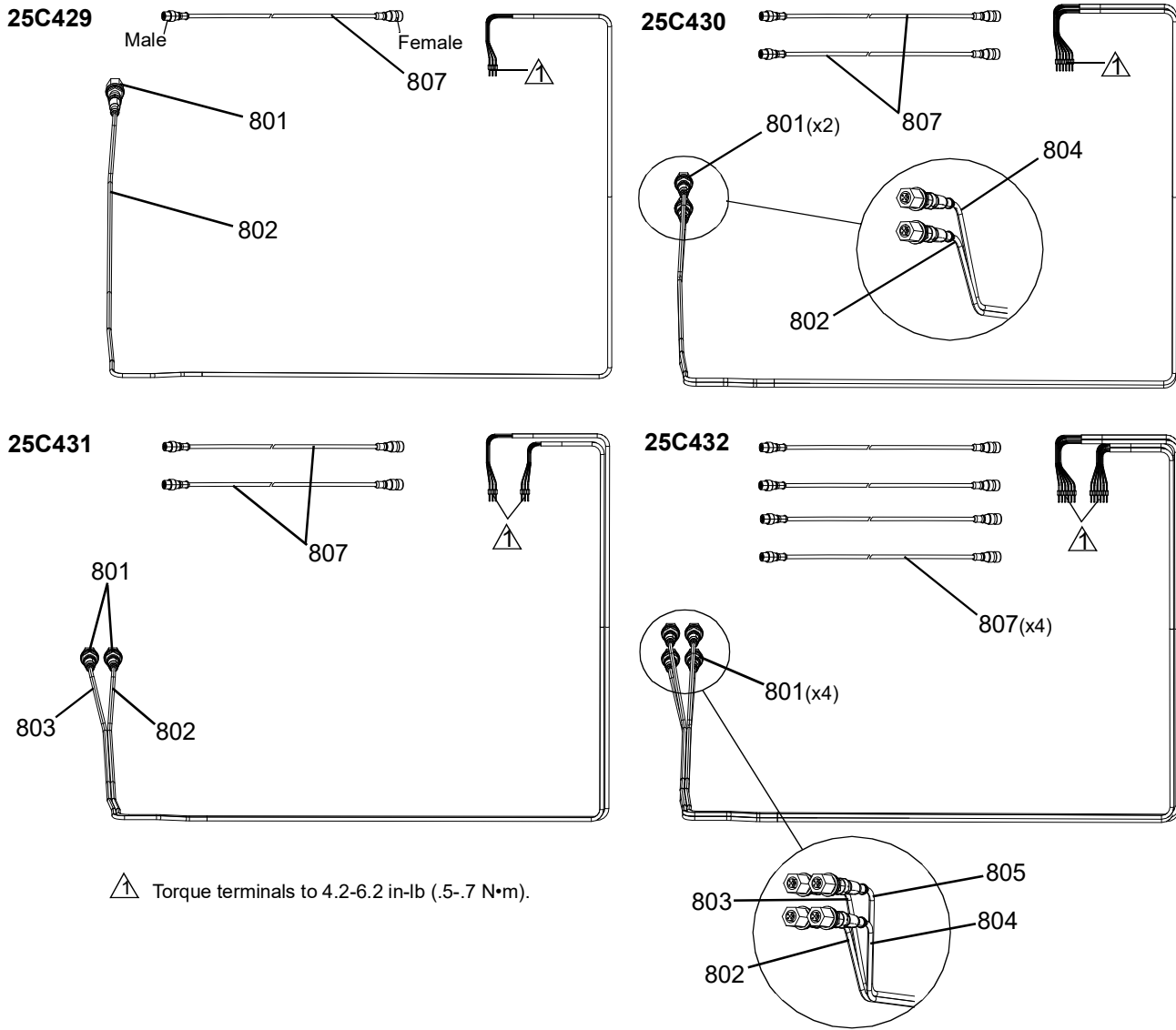


FIG. 29: Level Sensor Connections

Ref	Part	Description
801	121612	CONNECTOR, thru, m12, mx f
802	17E449	HARNESS, motion table, c18
803	17E451	HARNESS, motion table, c19
804	17E450	HARNESS, motion table, c20
805	17E452	HARNESS, motion table, c21
806	114958*	STRAP, tie
807	123657	CABLE, 5 pin, male/female, 4.0 m

25C429	25C430	25C431	25C432
1	2	2	4
1	1	1	1
		1	1
	1		1
			1
4	4	4	4
1	2	2	4

* Not shown.

NOTE: Refer to **Appendix B - Wiring Schematics** on page **58** for wiring connection information.

Z-Height Sensor Kit, 25C476

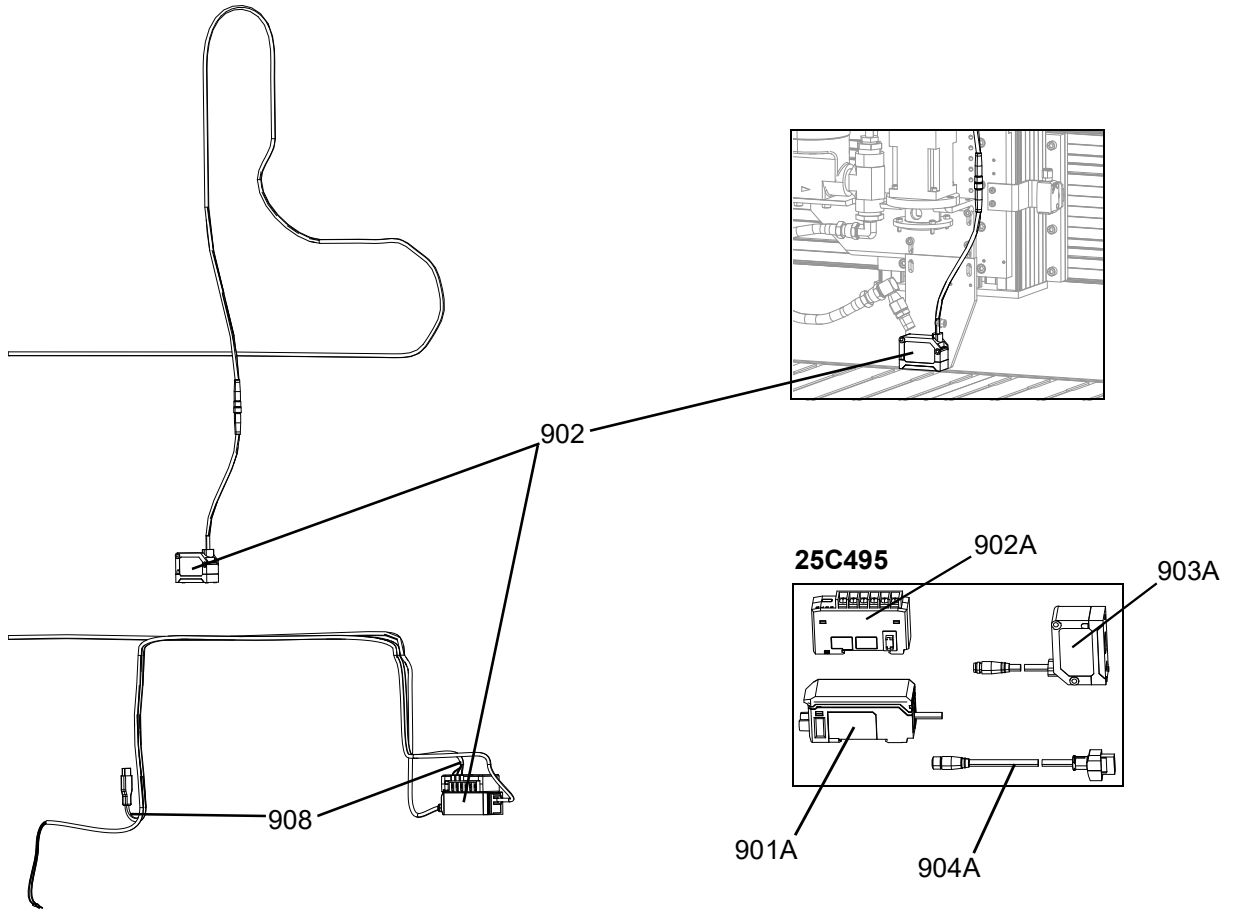


FIG. 30: Z-Height Sensor Kit

25C476

Ref	Part	Description	Quantity
902	25C495	KIT, sensor, z-height	1
908	17E417	HARNESS, motion table, usb, rs232	1
909	123767*	FERRULE, wire, 26 awg	1
910	17R409*	LABEL, target, vision	1

* Not shown.

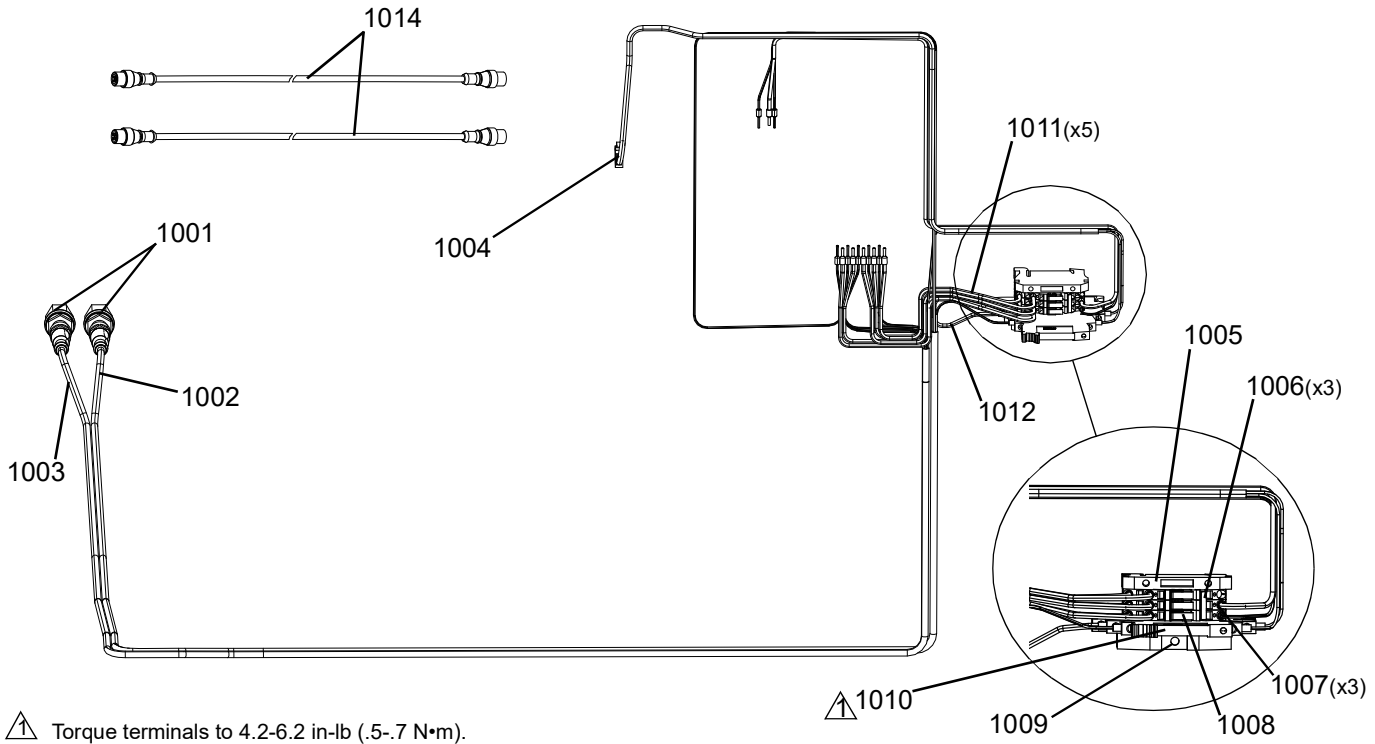
NOTE: Refer to **Appendix B - Wiring Schematics** on page 58 for wiring connection information.

25C495

Ref	Part	Description	Quantity
901A	129525	SENSOR, main unit, z-height	1
902A	129524	SENSOR, rs-232c unit, z-height	1
903A	129374	SENSOR, head, 100 mm range, z-height	1
904A	129523	CABLE, laser sensor, z-height	1

Supply System Connections

PR70 Connection, 25C433



⚠ Torque terminals to 4.2-6.2 in-lb (.5-.7 N*m).

FIG. 31: PR70 System Connection

Ref	Part	Description	Quantity
1001	121612	CONNECTOR, thru, m12, mxf	2
1002	17E442	HARNESS, motion table, pr, status	1
1003	17E443	HARNESS, motion table, pr, bit	1
1004	17E445	HARNESS, motion table, dispense	1
1005	123384	BLOCK, end stop, terminal	1
1006	123388	TERMINAL, jumper, spg, 3p	1
1007	125773	BLOCK, term, spg, 3p, tan, 600 v / 20 a	3
1008	81/0730-TM/11	TERMINAL, tag, marking, 5 mm, blank, zs	3
1009	125667	TERMINAL, stop, end	1
1010	123386	RELAY, 24 vdc coil, spdt, 6 a / 240 v	1
1011	17E444	HARNESS, wire, i/o, term	6
1012	17E446	HARNESS, wire, cr, term	1
1013	114958*	STRAP, tie	4
1014	129484	CABLE, 5 pin, m12, m/m, 4 m	2

* Not shown.

NOTE: Refer to **Appendix B - Wiring Schematics** on page **58** for wiring connection information.

PCF, 25C434, and HFR, 25C435, Connections

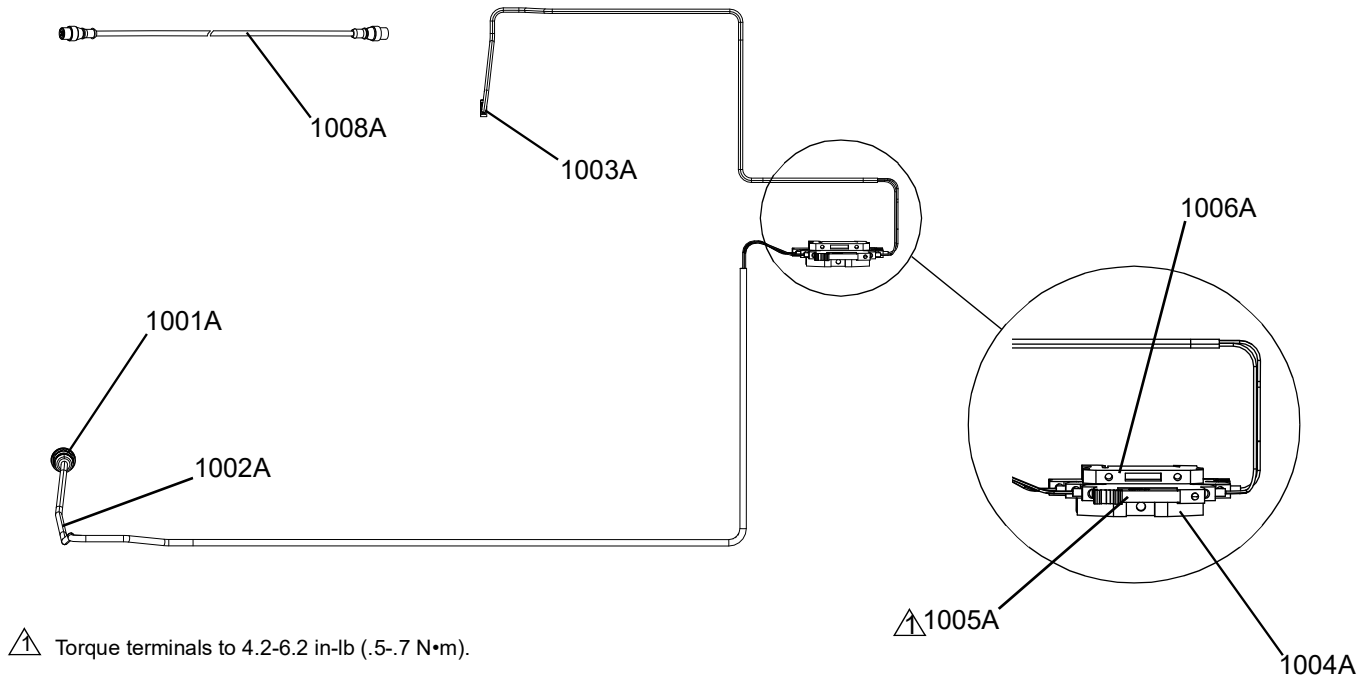


FIG. 32: PCF and HFR Connections

Ref	Part	Description	25C434	25C435
1001A	122540	CONNECTOR, thru, m12, mxf, 8 pin	1	
	121612	CONNECTOR, thru, m12, mxf		1
1002A	17E447	HARNESS, motion table, pcf, status	1	
	17E448	HARNESS, motion table, hfr, status		1
1003A	17E445	HARNESS, motion table, dispense	1	1
1004A	125667	TERMINAL, stop, end	1	1
1005A	123386	RELAY, 24 vdc coil, spdt, 6 a / 240 v	1	1
1006A	123384	BLOCK, end stop, terminal	1	1
1007A	114958*	STRAP, tie	4	4
1008A	129494	CABLE, 8 pin, m12, m/m, 4 m	1	
	129484	CABLE, 5 pin, m12, m/m, 4 m		1

* Not shown.

NOTE: Refer to **Appendix B - Wiring Schematics** on page **58** for wiring connection information.

Cartridge Feed, 25C436, and DynaMite Pump Feed, 25C437, Connections

Ref	Part	Description	Quantity
1001B	520563	TUBE, plyeth .375 od	15 ft

Vision Camera Kit, 25C477

⚠ Apply Velcro tape to the unlabeled side of the power supply and secure it. Agency markings and part information are to be visible.

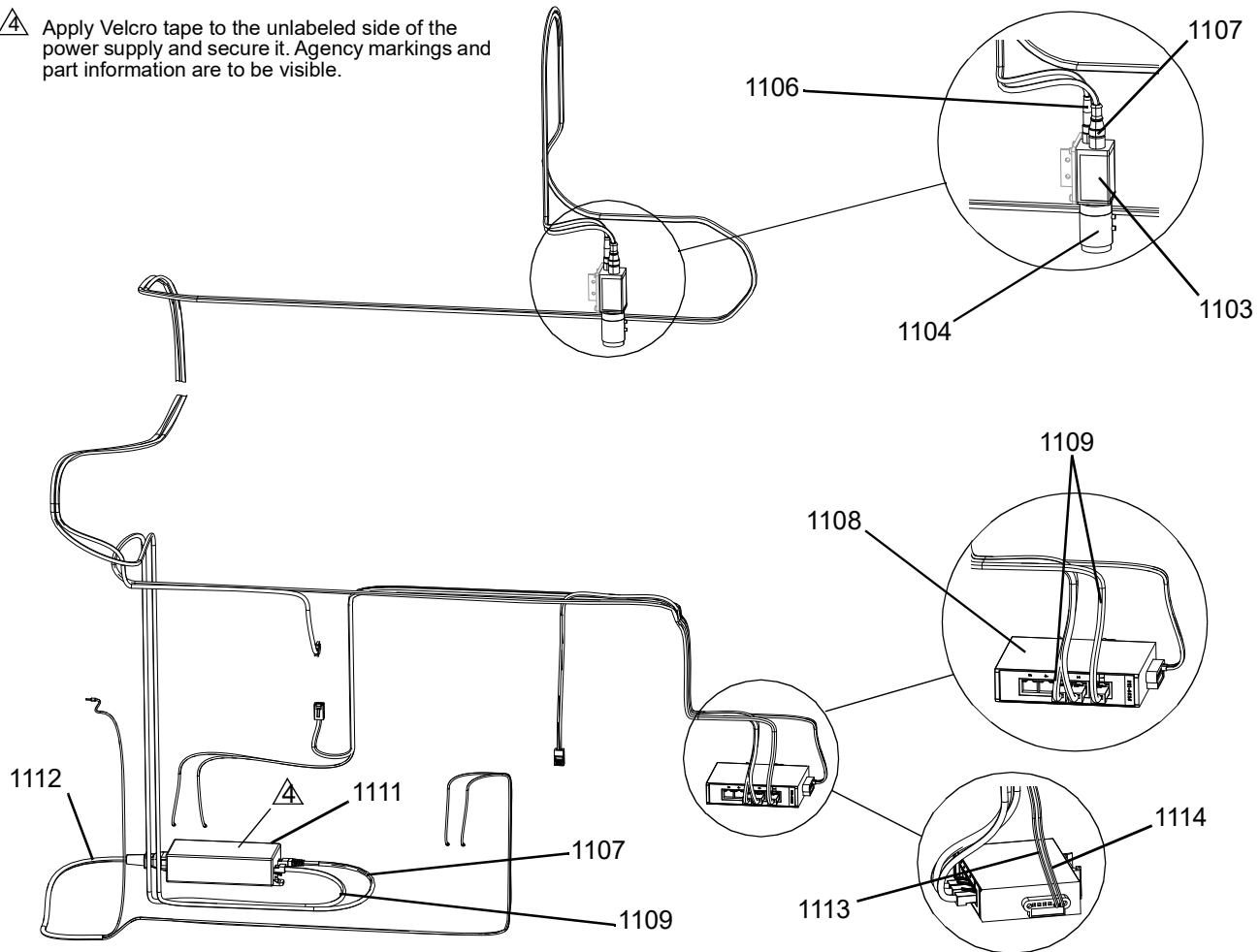


FIG. 33: Vision Camera Kit

Ref	Part	Description	Quantity
1102	17L811	SCREW, shcs, m4 x 10, lp head	2
1103	129521	CAMERA, vision	1
1104	129522	LENS, vision, camera, fuji	1
1106	17P230	HARNESS, signal, vision, camera	1
1107	129526	CABLE, ethernet, m12	1
1108	128267	SWITCH, ethernet, five port	1
1109	17E169	CABLE, ethernet, 5 ft, cat 5e	2
1110	128805*	TAPE, velcro, 1 in. x 3 in., black	1
1111	129527	POWER SUPPLY, 110-120 vac, camera	1
1112	17E370	HARNESS, pwr, 18 awg, iec, c13, locking	1
1113	17N078	HARNESS, wire, ps3, term, blue, c500	1
1114	17N079	HARNESS, wire, ps3, term, wht/bl, c500	1
1115	17R409*	LABEL, target, vision	1

* Not shown.

Not shown. Camera bracket is for reference only. Not included in kit as it is a custom feature based on a machine's requirements.

NOTE: Refer to **Appendix B - Wiring Schematics** on page 58 for wiring connection information.

Cable Tracks

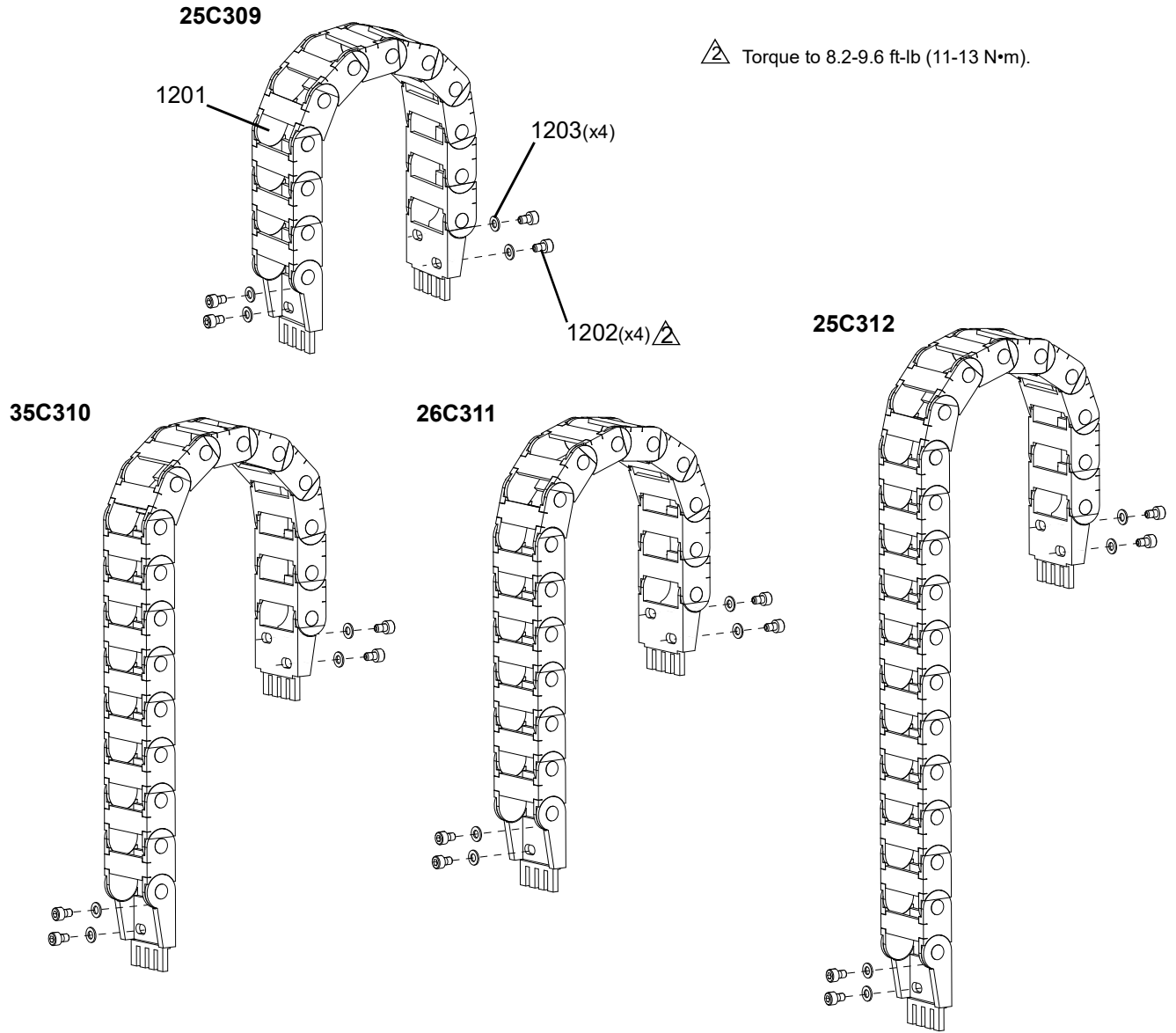


FIG. 34: Cable Tracks

Ref	Part	Description
	17E259	CABLE, track, igus, z-axis
1201	17E421	CABLE, track, igus, z-axis
	17K300	CABLE, track, igus, z-axis, c500
	17N007	CABLE, track, igus, z-axis, c500
1202	121224	SCREW, shcs, m5-.8 x 8 mm
1203	117017	WASHER

25C309	25C310	25C311	25C312
1			
	1		
		1	
			1
4	4	4	4
4	4	4	4

Cable Bundles

Part	Description	Quantity											
		1301	1302	1303	1304	1305	1306	1307	1308	1309	1310	1311	1312
25C351	BUNDLE, cable, z, pd, c3	1	1	2 ft	1	1	1	1	2	8			
25C352	BUNDLE, cable, z, 1053, c3	1	1	2.5 ft	1	1	1	1		8			
25C353	BUNDLE, cable, z, pc, c3	1	1	2.2 ft		1	1			8			
25C354	BUNDLE, cable, z, 1206, c3	1	1	2.5 ft	1					8			
25C355	BUNDLE, cable, z, 710, c3	1	1	2.5 ft	1					8			
25C356	BUNDLE, cable, z, adv, c3	1	1	2.1 ft	1					8	25 ft	1	
25C357	BUNDLE, cable, z, md2, c3	1	1							4			
25C358	BUNDLE, cable, z, end, c3	1	1	2.5 ft	1					8			
25C359	BUNDLE, cable, z, pd, c5	1	1	2.3 ft	1	1	1	1	2	8			
25C360	BUNDLE, cable, z, 1053, c5	1	1	2.8 ft	1	1	1	1		8			
25C361	BUNDLE, cable, z, pc, c5	1	1	2.4 ft		1	1			8			
25C362	BUNDLE, cable, z, 1206, c5	1	1	2.8 ft	1					8			
25C387	BUNDLE, cable, z, 710, c5	1	1	2.8 ft	1					8			
25C388	BUNDLE, cable, z, adv, c5	1	1	2.4 ft	1					8	25 ft	1	
25C389	BUNDLE, cable, z, md2, c5	1	1							4			
25C399	BUNDLE, cable, z, end, c5	1	1	2.8 ft	1					8			
25C400	BUNDLE, cable, no z, pd	1	1	1.8 ft	1	1	1	1					1 ft
25C401	BUNDLE, cable, no z, 1053	1	1	1.8 ft	1	1	1	1					1 ft
25C402	BUNDLE, cable, no z, pc	1	1	1.5 ft		1	1						1 ft
25C403	BUNDLE, cable, no z, 1206	1	1	2 ft	1								1 ft
25C404	BUNDLE, cable, no z, 710	1	1	2 ft	1								1 ft
25C405	BUNDLE, cable, no z, adv	1	1	1.8 ft	1						25 ft	1	1 ft
25C406	BUNDLE, cable, no z, md2	1	1										1 ft
25C407	BUNDLE, cable, no z, end	1	1	2.2 ft	1								1 ft

NOTE: See the table on page 51 for part numbers and descriptions matching the part reference numbers listed above.

NOTE: Refer to **Appendix B - Wiring Schematics** on page 58 for wiring connection information.

Cable Bundle Part Reference Table

Ref	Part	Description
1301	124344	CABLE, gca, m12-5p, m/f, 1.0m
	127666	CABLE, gca, m12-5p, m/f, 0.6 m
1302	17E423	HARNESS, wire, gnd, disp, mini, z
	17E428	HARNESS, wire, gnd, disp, m5, z
	17E426	HARNESS, wire, gnd, disp, m5, z
	17E427	HARNESS, wire, gnd, disp, m5, z
	17E422	HARNESS, wire, gnd, disp, mini, no z
	17E425	HARNESS, wire, gnd, disp, m5, no z
1303	054130	TUBE, plyeth .250 od
1304	125357	CABLE, m8, 4-pin, mf, 1 meter, molded
	17E435	HARNESS, motion table, disp, 710, z
	129479	HARNESS, vga, hd15, mf, 25 ft, blk
1305	17J487	HARNESS, motion table, power, disp
	17K452	HARNESS, motion table, power, disp
	17E431	HARNESS, motion table, power, disp
	17E430	HARNESS, motion table, power, disp, n
1306	17E402	HARNESS, motion table, motor, dispen
	17E404	HARNESS, motion table, motor, dispen
	17E433	HARNESS, motion table, motor, dispen
	17E432	HARNESS, motion table, motor, disp, n
1307	17E403	HARNESS, motion table, dispense
	17E405	HARNESS, motion table, dispense
	17E429	HARNESS, motion table, dispense, no z
1308	124943	CABLE, m12, 5 pin, rev key, m/f, 1 m
1309	114958	STRAP, tie
1310	060644	GUARD, spiral, 3/8 in., pe
1311	123789	COUPLER, 1/4 in. od tubing
1312	124561	TUBE, pvc, 4 mm od, clear

Air Controls

24X853, 25C185, 25C186

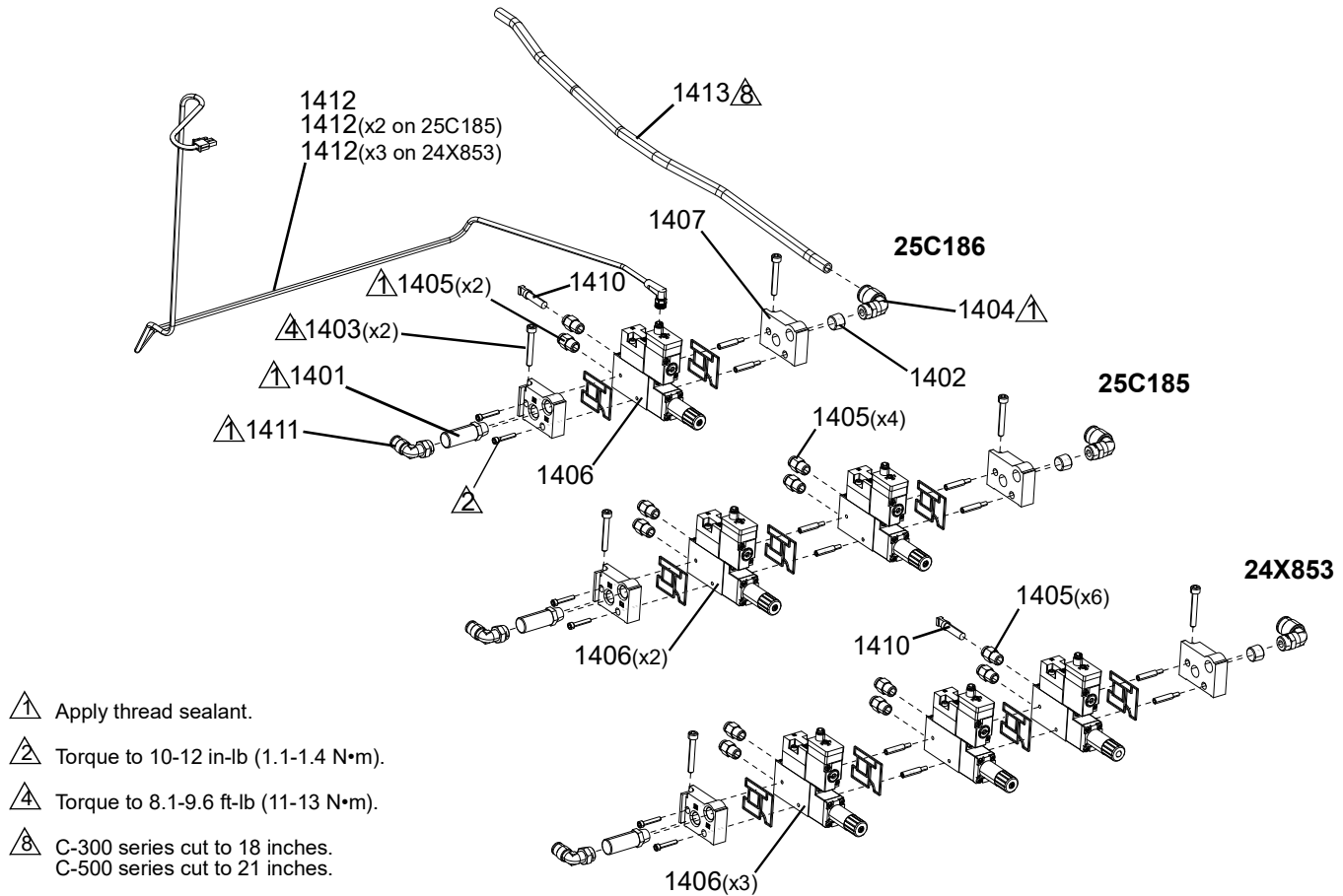


FIG. 35: Air Controls 24X853, 25C185, 25C186

Ref	Part	Description	24X853	25C185	25C186
1401	080111	MUFFLER, 1/4 in. npt, brass	1	1	1
1402	100721	PLUG, pipe	1	1	1
1403	117127	SCREW, shcs m5 x 35	2	2	2
1404	121018	FITTING, elbow, male, swivel, 1/4 in. npt	1	1	1
1405	123371	FITTING, connector, 1/4 tub x 1/8 in. npt, b	6	4	2
1406	128300	VALVE, solenoid, 4/2 x 1/8	3	2	1
1407	128301	KIT, solenoid, end plates	1	1	1
1410	21604-01	PLUG, plug, tube, plastic, 1/4 in. dia.	1		1
1411	121022	FITTING, elbow, male, 1/4 in. npt	1	1	1
1412	17E373	HARNESS, motion table, pneumatic	3	2	1
1413	520563	TUBE, plyeth .375 od	2 ft	2 ft	2 ft

NOTE: Refer to Air Controls in **Air Controls** on page 63 for connection information.

710 Air Control, 25C308

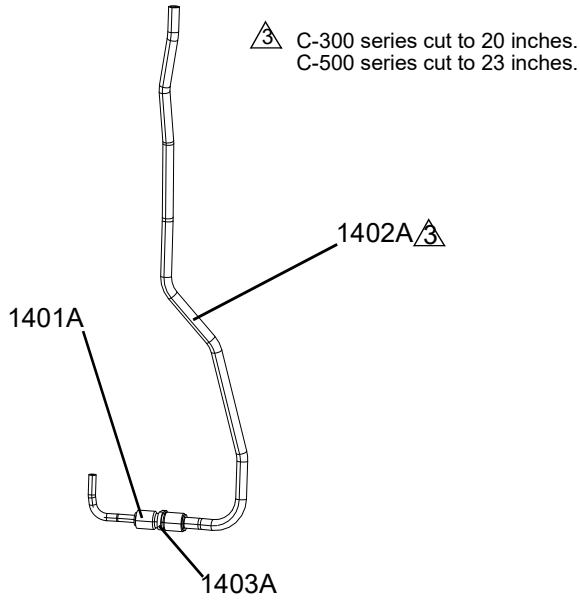


FIG. 36: 710 Air Control

Ref	Part	Description	Quantity
1401A	115743	FITTING, tube, unequal 3/8 to 1/4	1
1402A	520563	TUBE, plyeth .375 od	2 ft
1403A	114958	STRAP, tie	1

NOTE: Refer to Air Controls in **Air Controls** on page **63** for connection information.

Air Inlet Control, 25C297

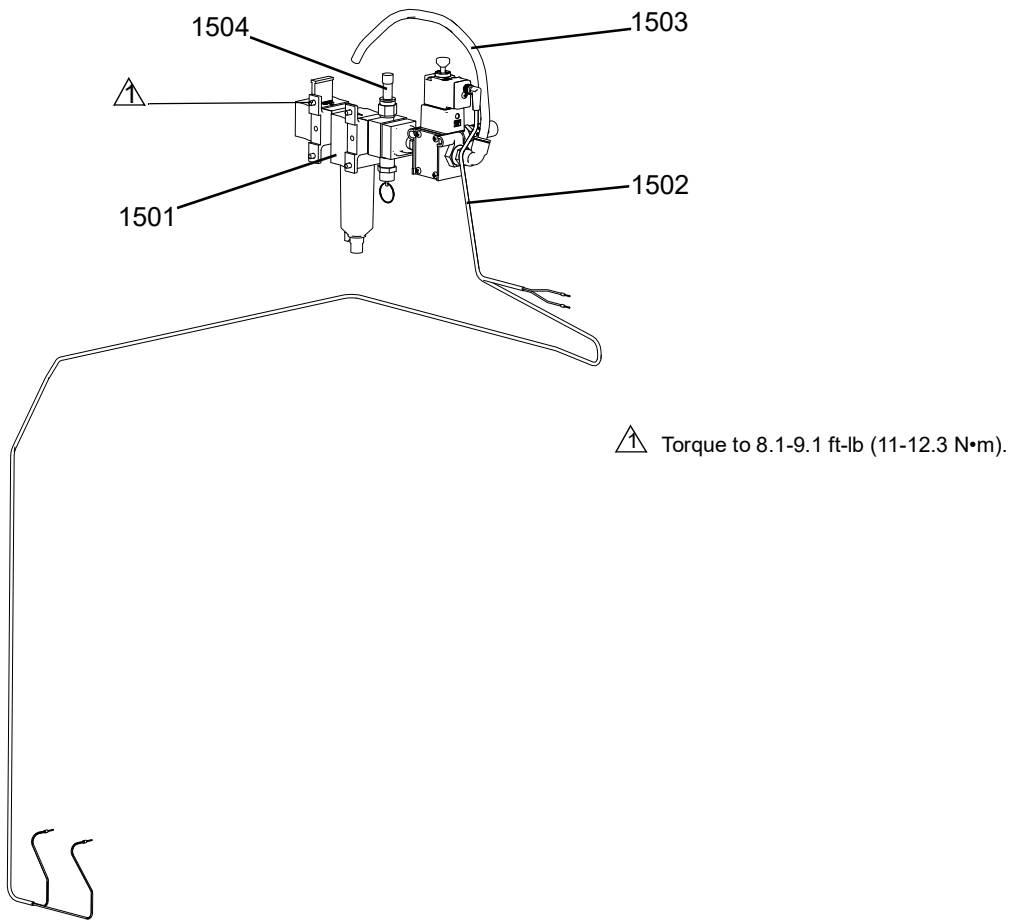


FIG. 37: Air Inlet Control

Ref	Part	Description	Quantity
1501	24Y776	CONTROL, inlet air	1
1502	17E372	HARNESS, motion table, pneu, dump	1
1503	520563	TUBE, plyeth .375 od	1
1504	124419	PLUG, tube, push, 3/8 in.	1

NOTE: Refer to Air Controls in **Air Controls** on page **63** for connection information.

Motion Table Input/Output Board, 25C314

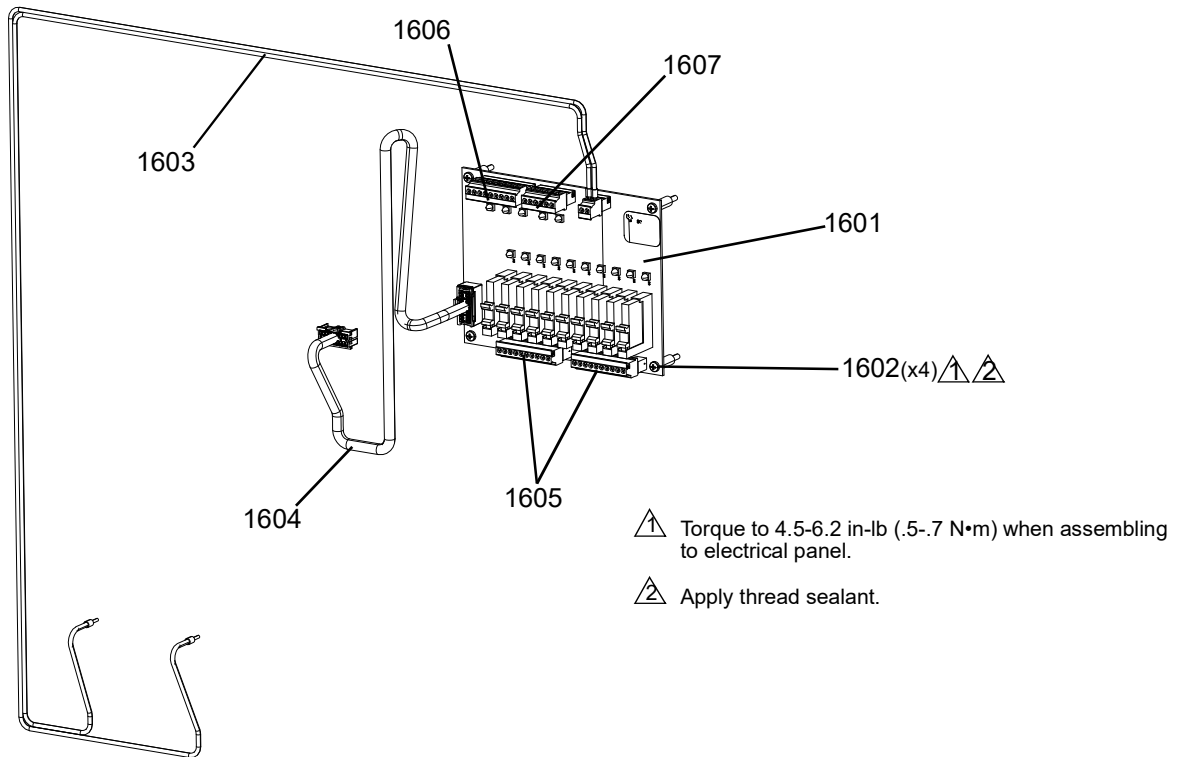


FIG. 38: Input/Output Board

Ref	Part	Description	Quantity
1601	25A480	MODULE, gca, dt expnsn gen ind	1
1602	128825	SCREW, mach, pnh, m3 x 0.5, 25 mm, cs	4
1603	17E441	HARNESS, wire, pwr, expnsn	1
1604	17L713	HARNESS, motion table, expans i/o	1
1605	116773	CONNECTOR, plug, 3.81 mm, 10 position	2
1606	129486	CONNECTOR, plug, 3.81 mm, 9 position	1
1607	119162	CONNECTOR, plug, 6 position	1

NOTE: Refer to **Appendix B - Wiring Schematics** on page **58** for wiring connection information.

Cord Sets

Part No	Description	Quantity
121055	CORD SET, us, mx, pr, ca, tw, 115v, 10a	1
121054	CORD SET, us, 250v, 10a, 10 ft	1
121056	CORD SET, fr, ger, is, nl, no, tr, 250v	1
121057	CORD SET, uk, ie, my, sg, 250v, 10a	1
121058	CORD SET, israel, 250v, 10a	1
124864	CORD SET, adptr, australia, 8 ft lg	1
124861	CORD SET, adptr, italy, 8 ft lg	1
124863	CORD SET, adptr, switzerland, 8 ft lg	1
124862	CORD SET, adptr, denmark, 8 ft lg	1
121060	CORD SET, s africa, india, 250v, 16a	1

Appendix A - Wiring Reference

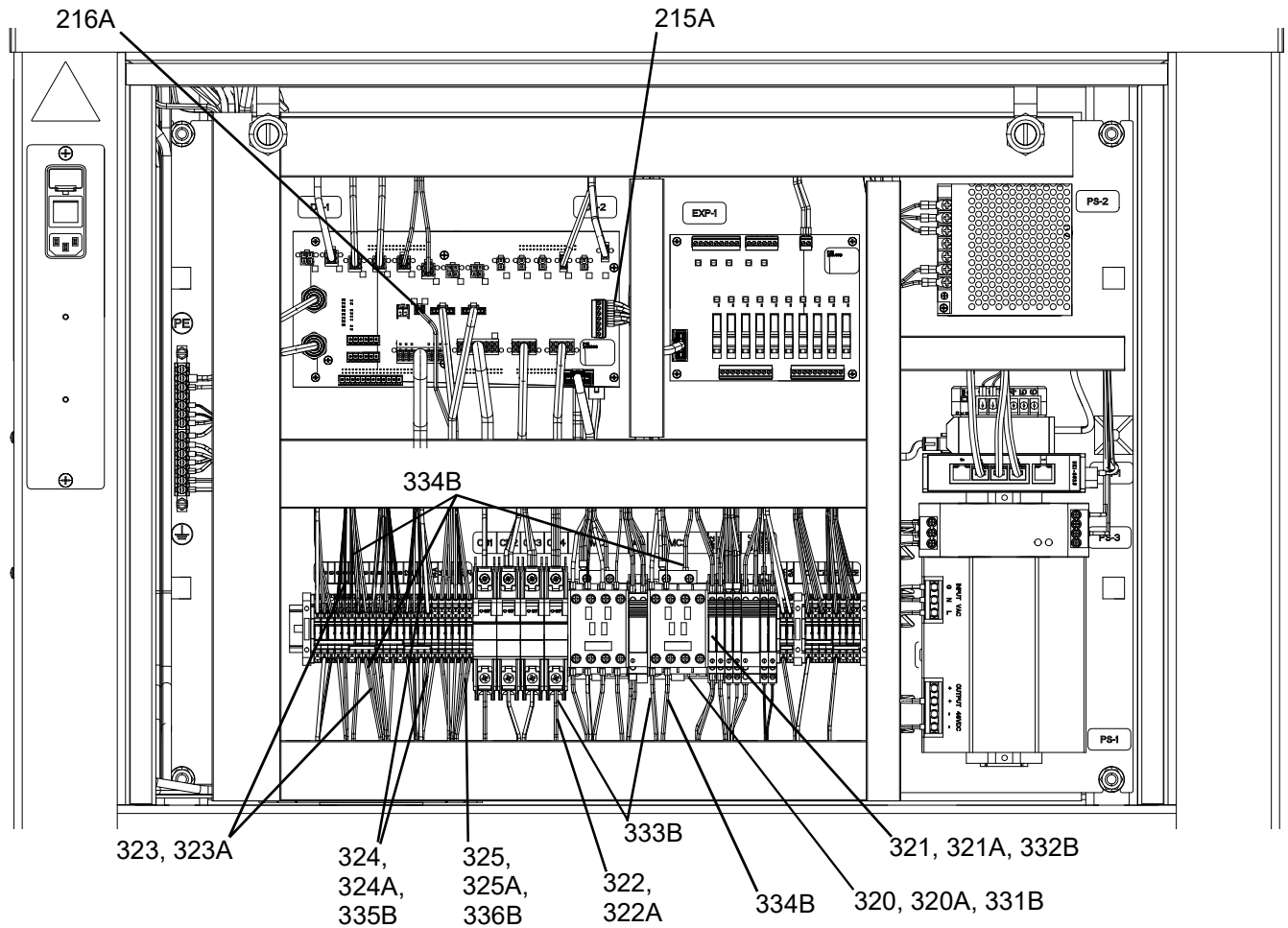
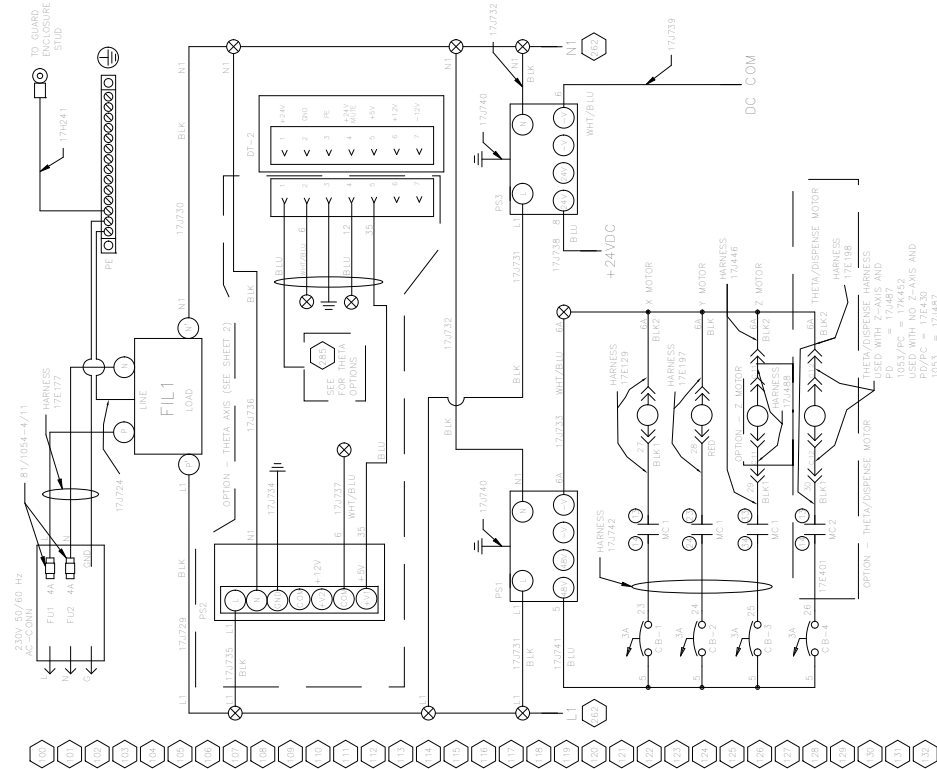
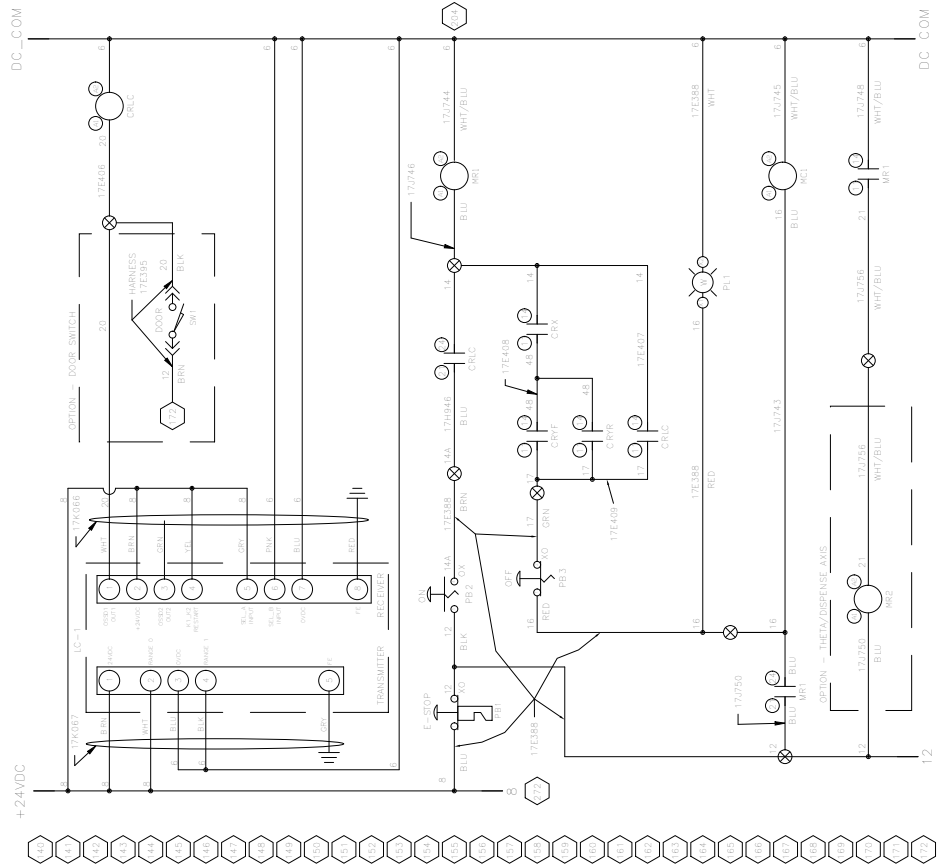


FIG. 39: Wiring Connections

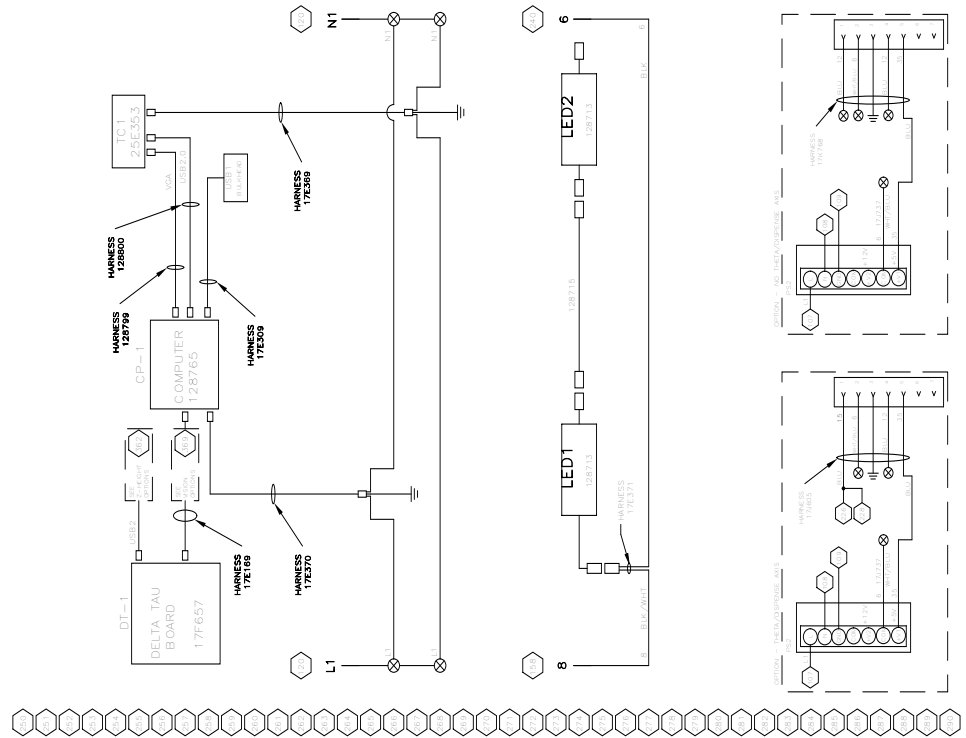
Ref	Part Number and Description
215A, 216A	See Mounting Module No Z Axis, 25C066 on page 20.
320, 321, 322, 323, 324, 325	See 1093 Valve Holder, 25C459 , and 1053 Valve Holder, 25C174 on page 21.
320A, 321A, 322A, 323A, 324A, 325A	See PD44 Valve Holder, 25C175 on page 23.
331, 332, 333, 334, 335, 336	See PC Pump Valve Holder, 25E453 on page 25.

Appendix B - Wiring Schematics

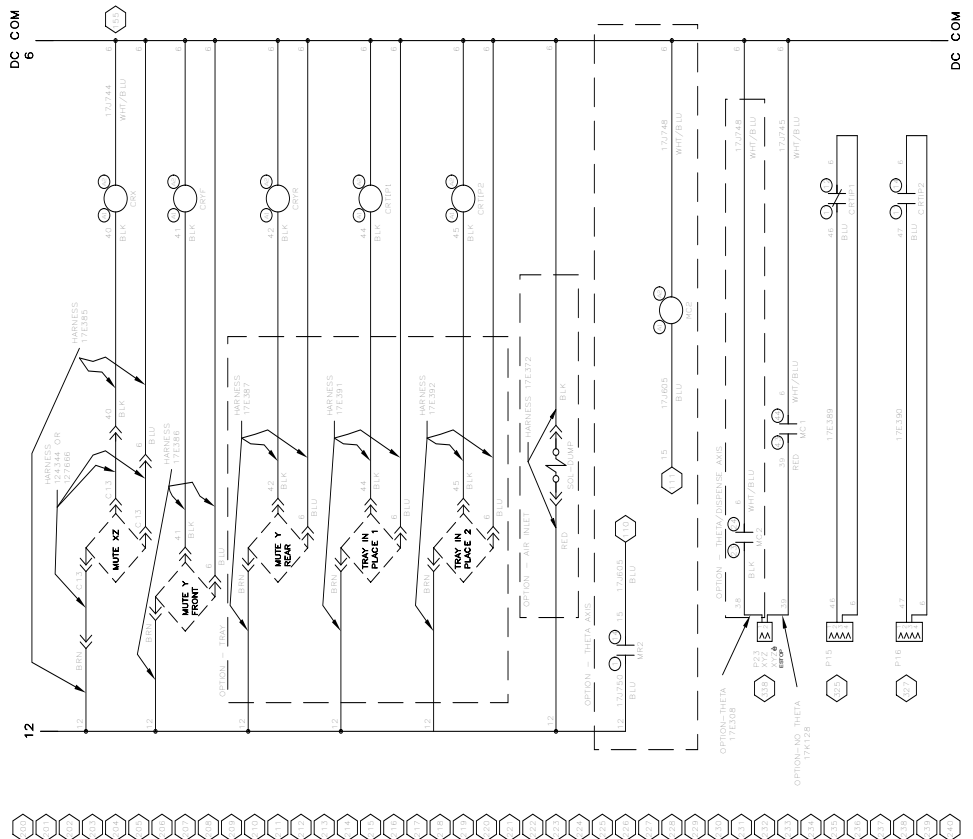
Power Supply



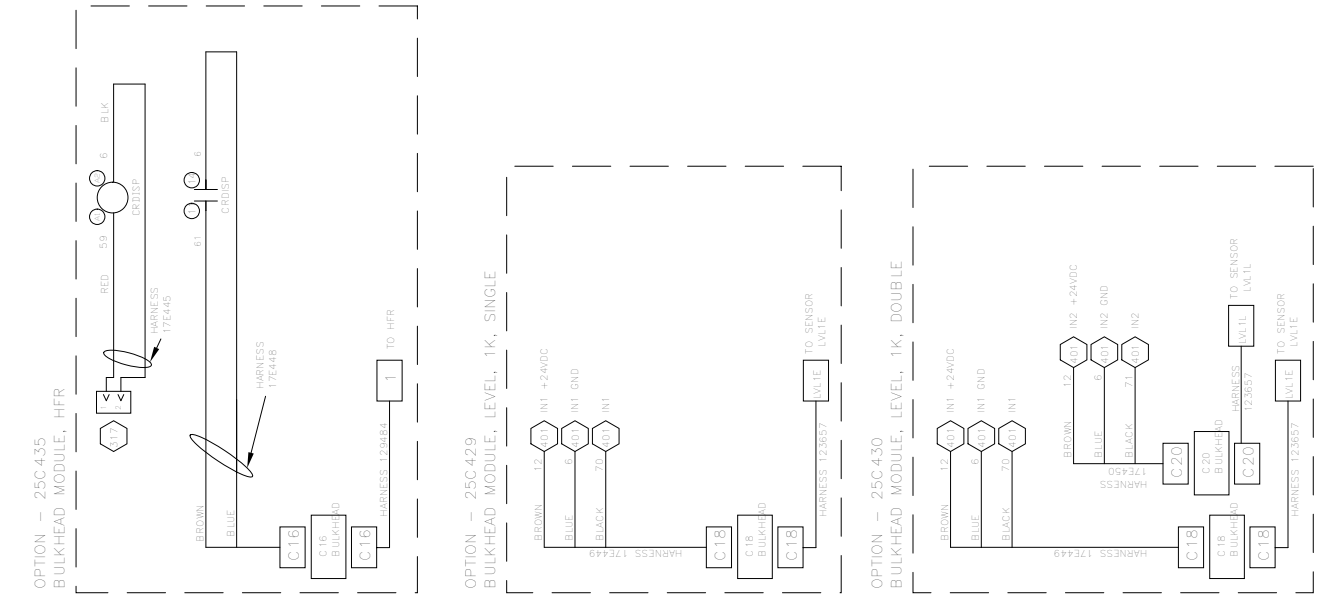
Motion Control



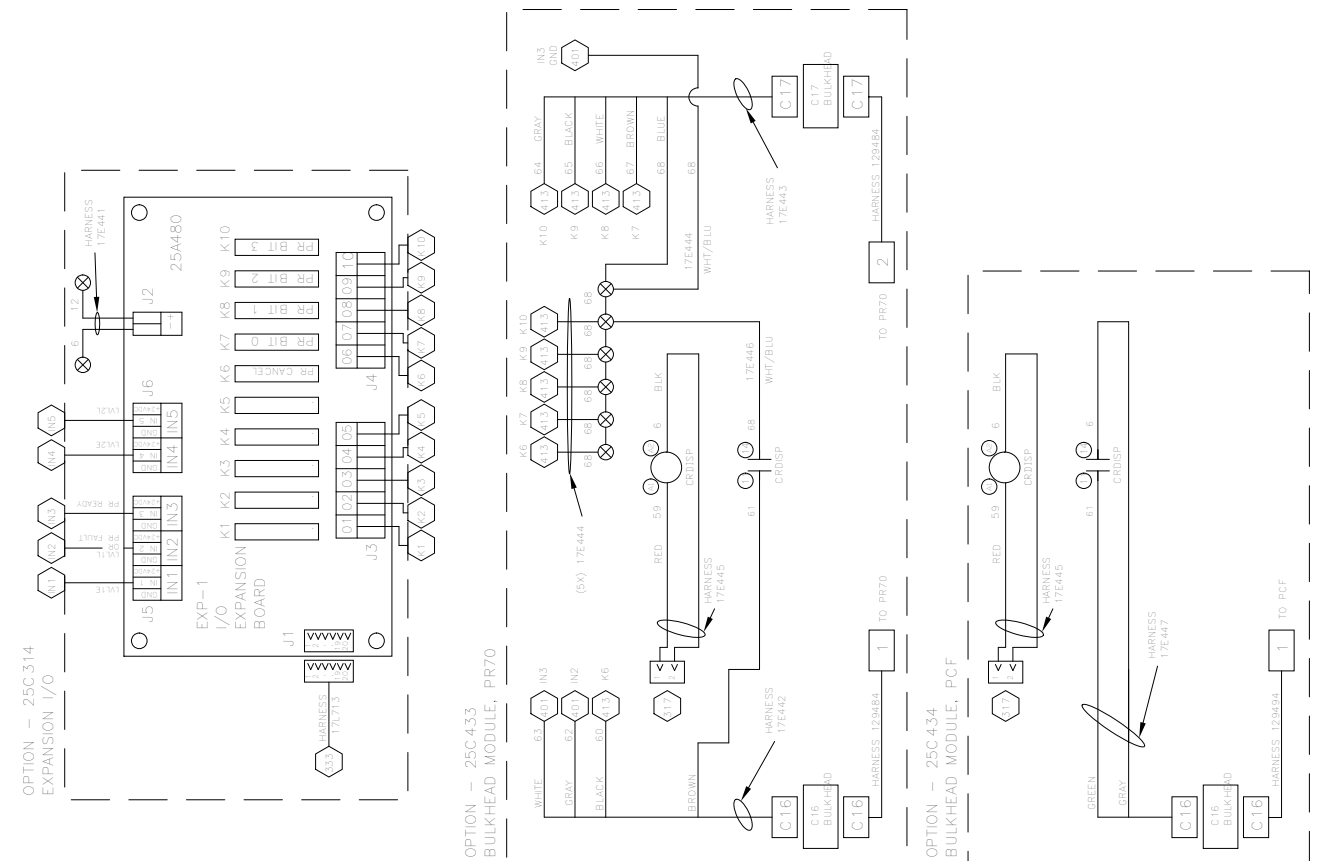
Sensor Connections



Input/Output (i/o) Expansion Board Options



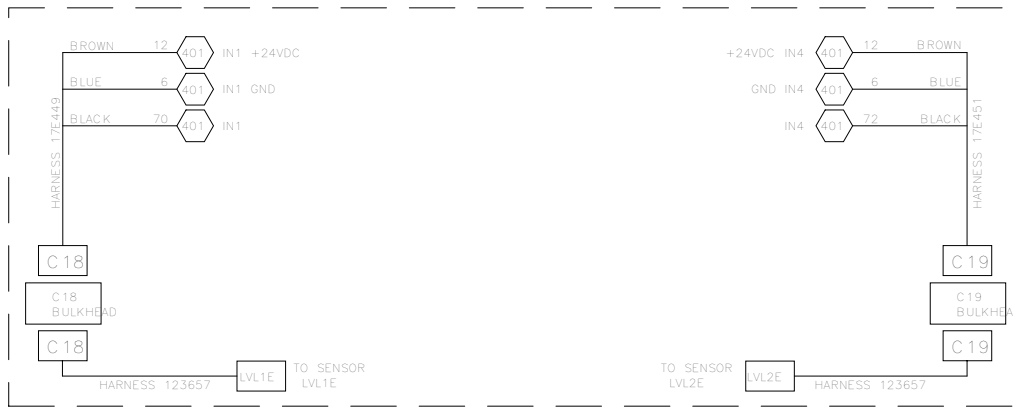
450 451 452 453 454 455 456 457 458 459 460 461 462 463 464 465 466 467 468 469 470 471 472 473 474 475 476 477 478 479 480 481 482 483 484 485 486 487 488 489 490 491 492



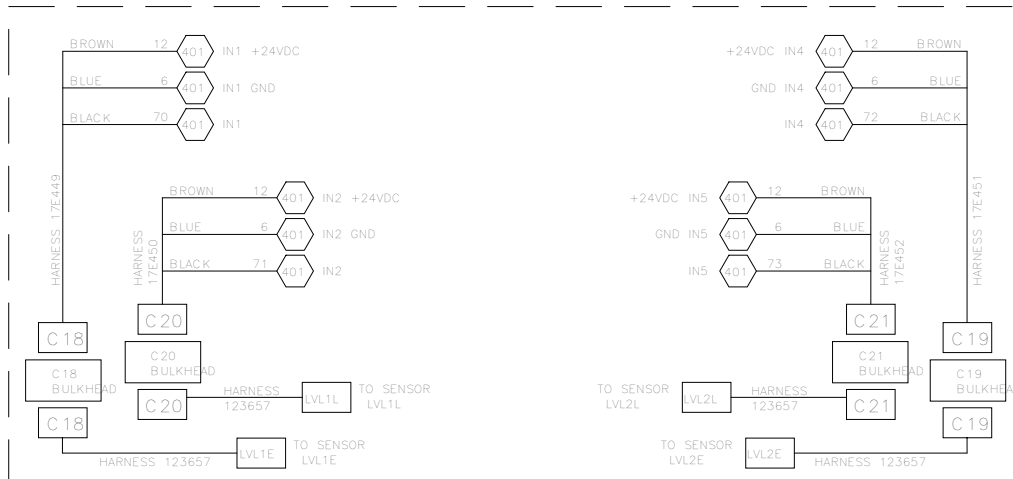
400 401 402 403 404 405 406 407 408 409 410 411 412 413 414 415 416 417 418 419 420 421 422 423 424 425 426 427 428 429 430 431 432 433 434 435 436 437 438 439 440 441 442

More Options for I/O Expansion Board

OPTION - 25C431
BULKHEAD MODULE, LEVEL, 2K, SINGLE

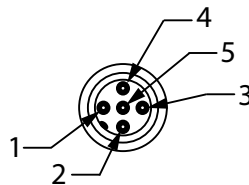


OPTION - 25C432
BULKHEAD MODULE, LEVEL, 2K, DOUBLE

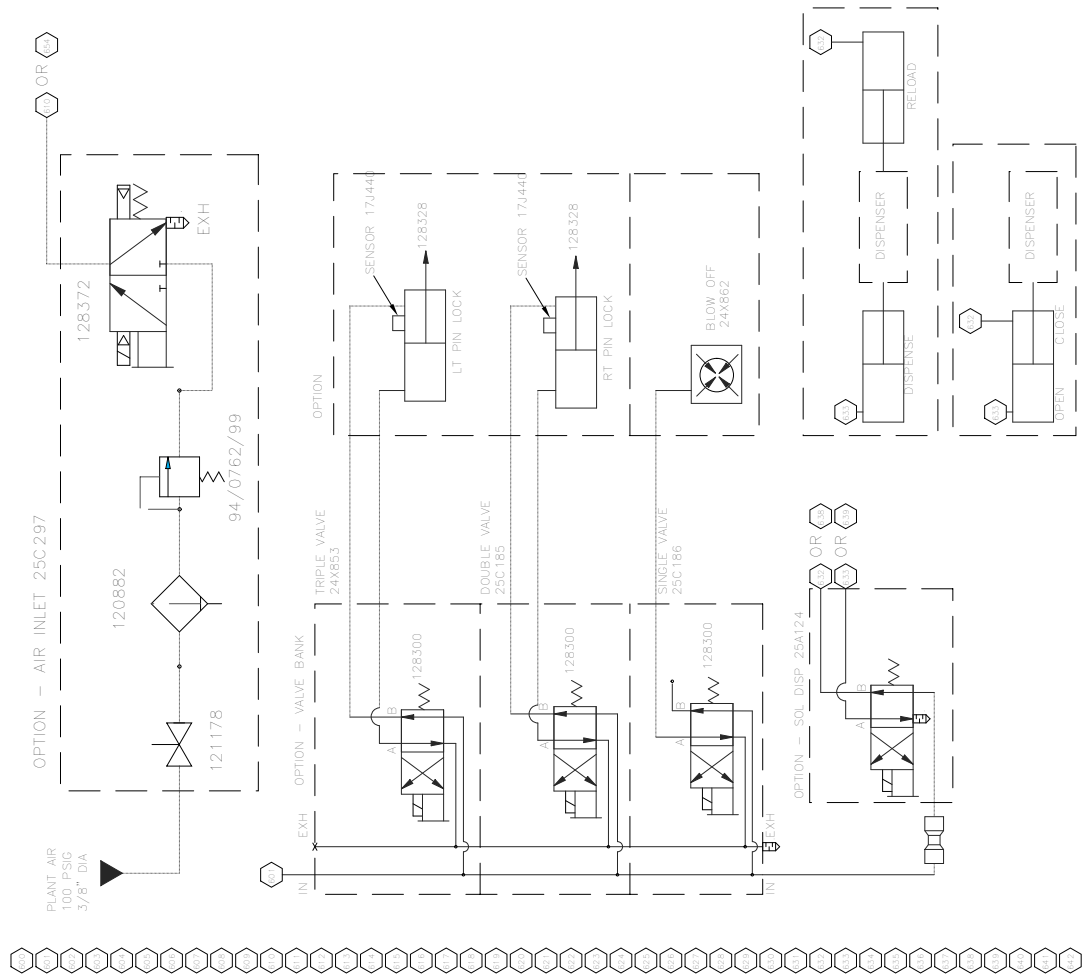


NOTE: When using a non-Graco feed system with Unixact, you need to provide a 5-pin M12 male connector to connect to the level sensor options 25C429-25C432 (C18-C21 above). A connector can be ordered by using Graco - part no. 122522. It is used to connect with the 5-pin M12 female connector supplied with the UniXact system. Multiple connectors may be required depending on the level sensor option. See **Level Sensor Connections** on page 44. The pin functions are shown in the table below.

Pin Number	Function
1	+24 VDC
2	-----
3	Common
4	Signal
5	-----



Air Controls



Graco Standard Warranty

Graco warrants all equipment referenced in this document which is manufactured by Graco and bearing its name to be free from defects in material and workmanship on the date of sale to the original purchaser for use. With the exception of any special, extended, or limited warranty published by Graco, Graco will, for a period of twelve months from the date of sale, repair or replace any part of the equipment determined by Graco to be defective. This warranty applies only when the equipment is installed, operated and maintained in accordance with Graco's written recommendations.

This warranty does not cover, and Graco shall not be liable for general wear and tear, or any malfunction, damage or wear caused by faulty installation, misapplication, abrasion, corrosion, inadequate or improper maintenance, negligence, accident, tampering, or substitution of non-Graco component parts. Nor shall Graco be liable for malfunction, damage or wear caused by the incompatibility of Graco equipment with structures, accessories, equipment or materials not supplied by Graco, or the improper design, manufacture, installation, operation or maintenance of structures, accessories, equipment or materials not supplied by Graco.

This warranty is conditioned upon the prepaid return of the equipment claimed to be defective to an authorized Graco distributor for verification of the claimed defect. If the claimed defect is verified, Graco will repair or replace free of charge any defective parts. The equipment will be returned to the original purchaser transportation prepaid. If inspection of the equipment does not disclose any defect in material or workmanship, repairs will be made at a reasonable charge, which charges may include the costs of parts, labor, and transportation.

THIS WARRANTY IS EXCLUSIVE, AND IS IN LIEU OF ANY OTHER WARRANTIES, EXPRESS OR IMPLIED, INCLUDING BUT NOT LIMITED TO WARRANTY OF MERCHANTABILITY OR WARRANTY OF FITNESS FOR A PARTICULAR PURPOSE.

Graco's sole obligation and buyer's sole remedy for any breach of warranty shall be as set forth above. The buyer agrees that no other remedy (including, but not limited to, incidental or consequential damages for lost profits, lost sales, injury to person or property, or any other incidental or consequential loss) shall be available. Any action for breach of warranty must be brought within two (2) years of the date of sale.

GRACO MAKES NO WARRANTY, AND DISCLAIMS ALL IMPLIED WARRANTIES OF MERCHANTABILITY AND FITNESS FOR A PARTICULAR PURPOSE, IN CONNECTION WITH ACCESSORIES, EQUIPMENT, MATERIALS OR COMPONENTS SOLD BUT NOT MANUFACTURED BY GRACO. These items sold, but not manufactured by Graco (such as electric motors, switches, hose, etc.), are subject to the warranty, if any, of their manufacturer. Graco will provide purchaser with reasonable assistance in making any claim for breach of these warranties.

In no event will Graco be liable for indirect, incidental, special or consequential damages resulting from Graco supplying equipment hereunder, or the furnishing, performance, or use of any products or other goods sold hereto, whether due to a breach of contract, breach of warranty, the negligence of Graco, or otherwise.

FOR GRACO CANADA CUSTOMERS

The Parties acknowledge that they have required that the present document, as well as all documents, notices and legal proceedings entered into, given or instituted pursuant hereto or relating directly or indirectly hereto, be drawn up in English. Les parties reconnaissent avoir convenu que la rédaction du présente document sera en Anglais, ainsi que tous documents, avis et procédures judiciaires exécutés, donnés ou intentés, à la suite de ou en rapport, directement ou indirectement, avec les procédures concernées.

Graco Information

Sealant and Adhesive Dispensing Equipment

For the latest information about Graco products, visit www.graco.com.

For patent information, see www.graco.com/patents.

TO PLACE AN ORDER, contact your Graco distributor, go to www.graco.com, or call to identify the nearest distributor.

If calling from the USA: 1-800-746-1334

If calling from outside the USA: 0-1-330-966-3000

All written and visual data contained in this document reflects the latest product information available at the time of publication. Graco reserves the right to make changes at any time without notice.

Original instructions. This manual contains English. MM 3A4061

Graco Headquarters: Minneapolis

International Offices: Belgium, China, Japan, Korea

GRACO INC. AND SUBSIDIARIES • P.O. BOX 1441 • MINNEAPOLIS MN 55440-1441 • USA
Copyright 2017, Graco Inc. All Graco manufacturing locations are registered to ISO 9001.

www.graco.com

Revision G, December 2021